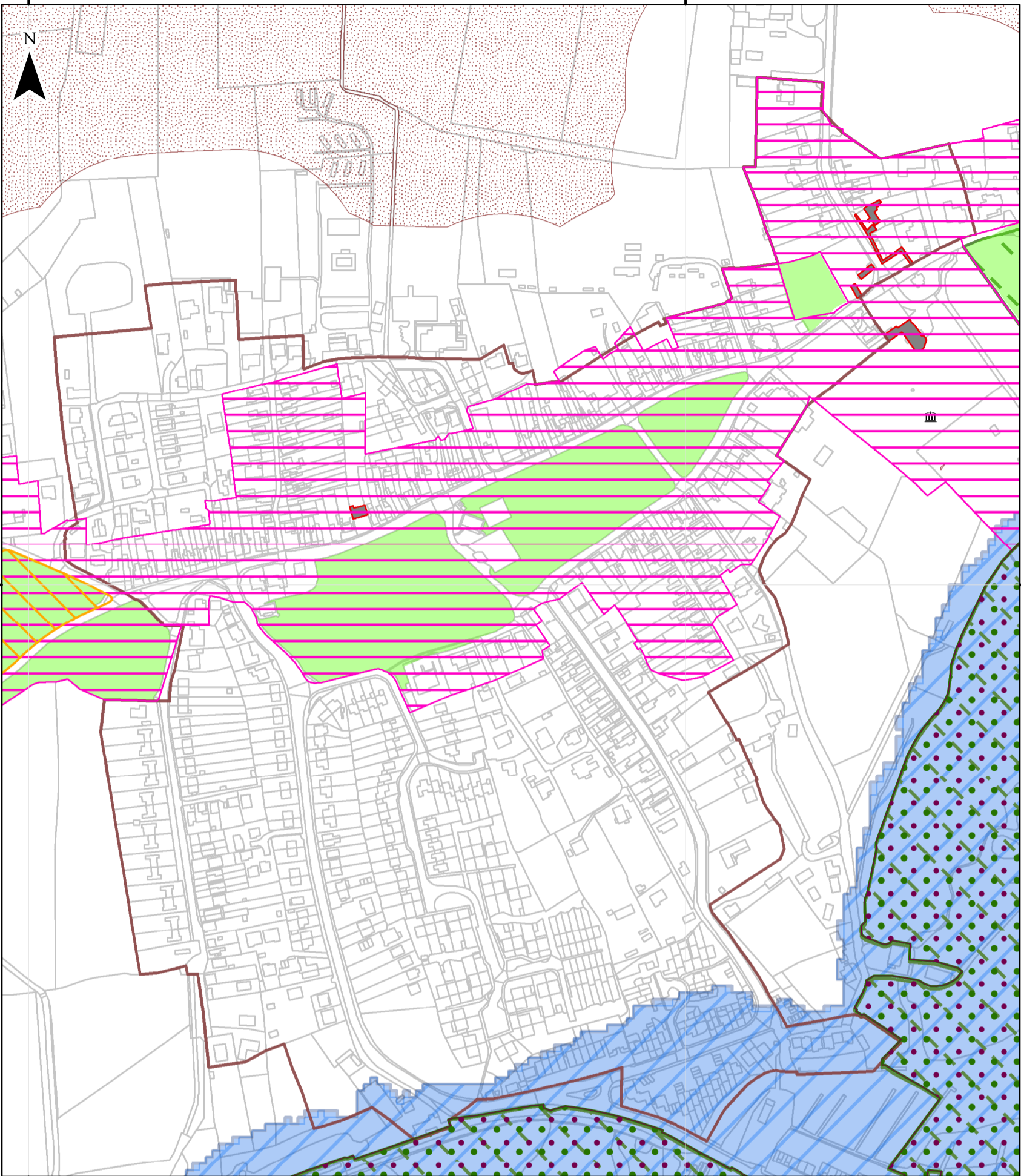


462500

463000



462500

463000

**INSET 13 - St Helens Rural Service Centre**



This map should be read in conjunction with the Island Plan Core Strategy. Further information can be found at the Isle of Wight Council's website - [www.iwight.com/IslandPlan](http://www.iwight.com/IslandPlan)

Please note - The Proposals Map will be updated on adoption of each Development Plan Document, some designations are liable to change and it is recommended that you check the latest position with the Council.

Disclaimer: The data shown on this map should be considered as a pictorial representation of geographic features. The absolute accuracy, geometric fidelity and positional accuracy of features is not guaranteed.

© Crown copyright and database rights 2012 Ordnance Survey 100019229.

Version 1 - March 2012

Map produced by the GeoData Institute

Policy Number		Policy Number		Policy Number	
<b>Spatial Strategy</b>					
	SP1	<b>Environment (Continued)</b>		<b>National (Continued)</b>	
	SP1, AAP1, AAP2, AAP3		SP8		SP5 and DM12
	SP1		SP9		SP5 and DM11
	SP1		SP9 and DM20		SP5 and DM11
<b>Economy</b>					
	SP3 and SP3(a) to (d)	<b>International</b>			SP5 and DM11
	SP9		SP5 and DM12	<b>Local Designations</b>	
	SP3 and DM9		SP5 and DM12		SP5 and DM12
	SP3 and DM9		SP5 and DM12		SP5 and DM11
<b>Environment</b>					
	SP5 and DM13	<b>National</b>			SP5 and DM11
	SP3(a) and DM13		SP5 and DM12	<b>Flooding</b>	
<b>Environment (Continued)</b>					
			SP5 and DM12		SP5 and DM14
			SP5 and DM12		SP5 and DM14
			SP5 and DM12		SP5 and DM14
			SP5 and DM12		

