



GRAZING LAND TO RENT

Alverstone Shute, Alverstone near Sandown – 5.5 acres of usable grazing land – available on flexible license terms.

For further information please contact:

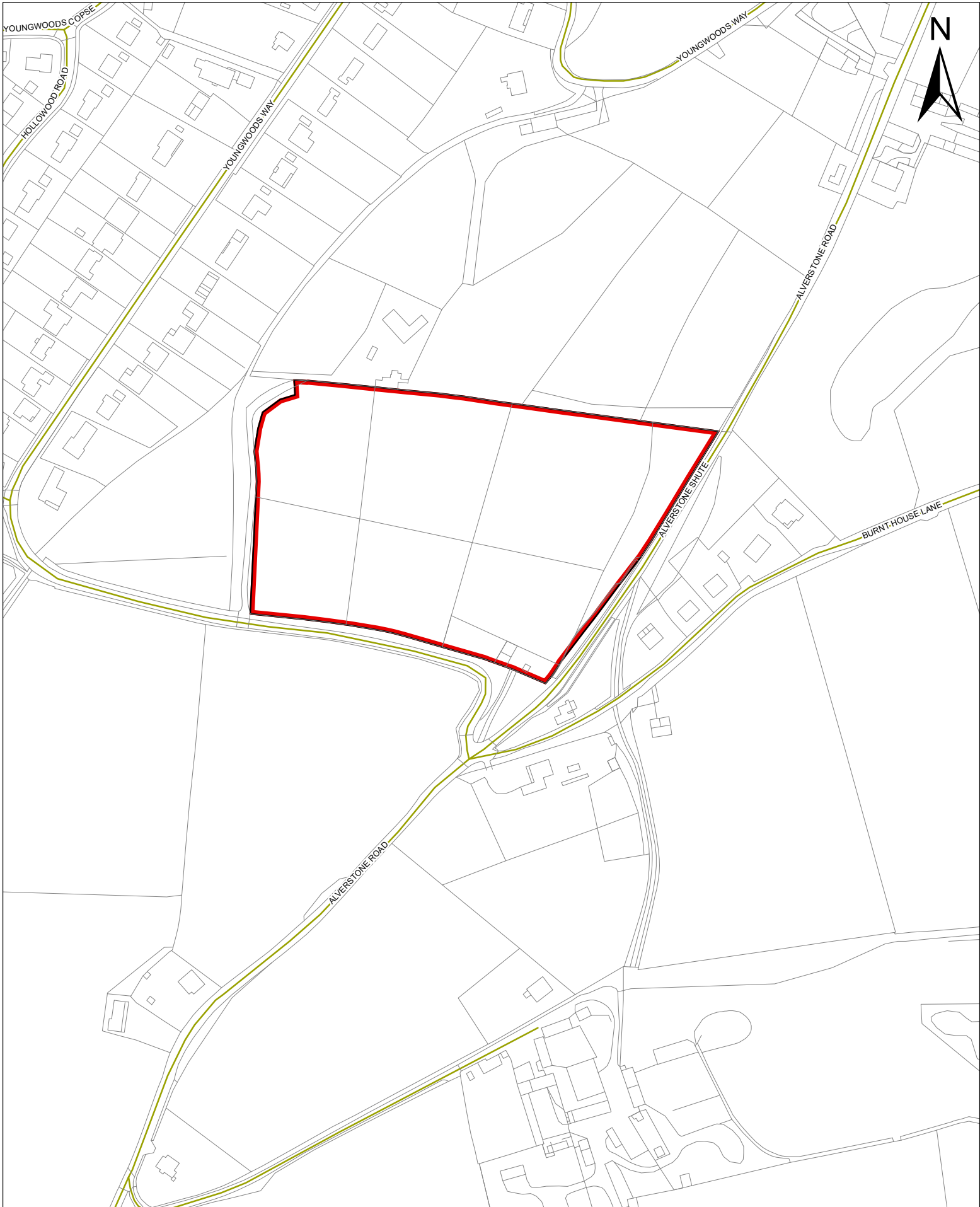
Andy Bond, Estate Surveyor, Property Services

Email: andrew.bond@iow.gov.uk

Isle of Wight Council
County Hall
Newport
Isle of Wight
PO30 1UD

Grazing Land, Alverstone Shute, Sandown

[Scale 1:2500 @ A4]



This map is based on Ordnance Survey material with the permission of Ordnance Survey on behalf of the Controller of Her Majesty's Stationery Office © Crown copyright. Unauthorised reproduction infringes Crown copyright and may lead to prosecution or civil proceedings. 100019229 2008.