

HERITAGE EDUCATION SERVICE

MUSEUM AND OUTREACH WORKSHOPS 2018

WORKSHOPS FOR EYFS/KS1

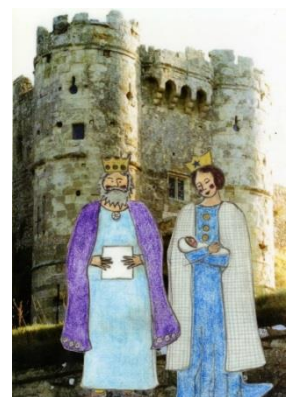
Our museum activities are a great way for pupils to learn about 'significant historical events, people and places in their own locality'.



Past Play (in school) This hands-on workshop includes demonstrations of original toys such as the zoetrope, jumping jacks and clockwork toys. Students will also play with a wide variety of replica toys, investigating how old toys move and work.

Life in a Castle, based on Sleeping Beauty (in school or Carisbrooke Castle Museum):

Learning about the castle as both a home and a fortress, through storytelling, role play, picture hunts and artefact handling. Also includes self-led resources to guide you around the castle before/after the workshop.



Carisbrooke Castle Timeline (in school or Carisbrooke Castle Museum):

An interactive look at key events during the castle's history, including stories of lords, ladies, heroes and prisoners. Also included is artefact handling, a demonstration of model siege weapons and an optional self-led photo-hunt that helps explore the castle grounds. This can also be adapted for KS2/3.

Victorian Pop-Up Museum (in school): Your pupils become curators, handling, researching and displaying a huge range of original Victorian artefacts. As a finale to the session students create a classroom museum and tour the exhibition.



Homes Then and Now: A comparison of everyday household items with role-play and a handling session. Items investigated include a hand pumped vacuum cleaner and washday equipment. The workshop can also include observational drawing.

We also run activity sessions for EYFS and KS1 children at **Newport Roman Villa** and **Cowes Maritime Museum**.

WORKSHOPS FOR KS2/3

PREHISTORY Prehistoric Isle of Wight (in school): What was happening on the Isle of Wight during Prehistory? Students will find out about the latest research and look at the changes in lifestyle and technology from the Stone Age to the Iron Age. The workshop includes; handling original flint tools, bison bones from the Island, corn grinding, axe polishing, making a small Bronze Age style pot and striking a replica Iron Age coin.



We have the following loans to enhance learning about prehistory: Stone Age Flint Implements Domestic Life in the New Stone Age, IV Neolithic Flint Implements loan Otzi the Iceman (late Neolithic) and Bronze Age Barbie, Bronze Age axes, Iron Age costume models.

ANCIENT EYGPT

Mummification and an Explorer's Treasures! (in school): Looking at how archaeological evidence can tell us about Egyptian burial practices. Pupils can handle an explorer's original artefacts, take part in the mummification process and handle a mummified hand!



ROMANS AND SAXONS



The Impact of the Roman's at Newport Roman Villa: Step back into third century Roman Britain by visiting the villa. It has a replica Roman kitchen, lots of hands-on activities and one of the best preserved domestic bath suites in England.

We run half day or whole day activity sessions to support the Key Stage 2 history curriculum. A two hour workshop with a tour costs £3.50 per student.

For an additional £1 per pupil we can deliver a **Roman Legionary/Celtic**

Warrior Handling activity contrasting Roman and Celtic armour or a **clay making** activity using replica Samian moulds or **write in Latin** using replica wax tablets and ink pens. Please e-mail me to book a session.



A Roman Excavation (in school): Exploring evidence through a simulated archaeological dig and placing the Roman Britons in context. Students get to handle original Roman finds that are uncovered in the Roman layer and decide if there is enough evidence for a Roman villa on the site. This makes a good villa pre-visit activity. It can also be adapted to focus on any time period you are studying.

Saxons on the Wight Session (in school or in Carisbrooke Castle Museum): Meet two Saxon Islanders. What can we discover about them from their burials? The main activity is based on excavations at Carisbrooke Castle and Chessel Down. Pupils look at archaeological evidence, recreate the burials with hand crafted replica grave goods and handle the artefacts.



Roman and Saxon Loans: We have a very wide range of Roman loans that include original jewellery, oil lamps, bathing items, a hypocaust model, replica clothing and mini - armour. We also have Saxon loans that include pottery with stampers (to re-create your own pot), sets of games, replica coins and jewellery and costume models.

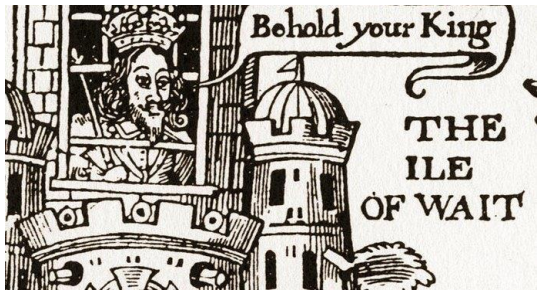
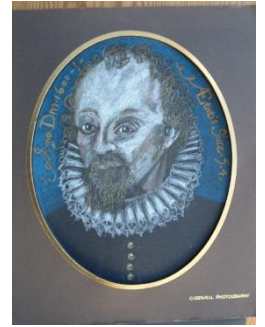
MEDIEVAL TO STUART TIMES



Carisbrooke Castle Timeline (in school or in Carisbrooke Castle Museum): An interactive look at key events during the castle's history, including stories of lords, ladies, heroes and prisoners with plenty of artefact handling. This workshop can also work well before a visit to the castle and help provide answers to enquiries such as 'Who was the most significant person at Carisbrooke Castle?' and 'How did the castle change over time?' Also includes self-led resources to guide

you around the castle before/after the workshop.

New! Tudor Times at Carisbrooke Castle including links to Shakespeare (in school or in Carisbrooke Castle Museum): Exploring the Tudor remains of Sir George Carey's (Elizabeth I's cousin) mansion, Tudor items in the museum artefacts and clothing of the rich. The workshop can also focus on George Carey's role as Shakespeare's patron and how the castle would have appeared in Shakespearean times.



I'm a King get me out of here! (in school or in Carisbrooke Castle Museum): Meet Mistress Wheeler the Kings' laundry maid. The workshop includes devising escape plans for Charles I, handling replica civil war armour, exploring the issues of the Civil War and finding out the real story behind the king's fascinating time at Carisbrooke Castle.

VICTORIANS (all ages)

Victorian Pop-Up Museum (in school): Your pupils become curators, handling, researching and displaying a huge range of original Victorian artefacts. As a finale to the session students create a classroom museum and tour the exhibition. We can also run this activity for other time periods.

Victorian Life and Mourning – Pop-up museum (at Northwood Cemetery or in school):

Students will:

- Learn about the mourning customs of the Victorians using Queen Victoria as an example
- Learn about a local tailor John Redfern, who made outfits for Queen Victoria
- Handle real Victorian objects in groups. These objects reflect items used in everyday life and those during mourning.
- Create a display of the objects with labels



FACETS AND TESSIE GOWNS—(See Page 104)

WORLD WAR I and II

Wartime and Northwood Cemetery (at Northwood Cemetery or in school):



Students can:

- Learn about people commemorated and/or buried at Northwood Cemetery from the two World Wars
- Try on replica WW1 uniforms.
- Handle real WWI and WWII objects and costumes.
- Learn about Isle of Wight soldiers from 1914-18 through their photographs or letters. See

<https://sites.google.com/site/iowrifles/home> for more details.

- Create a classroom museum using the artefacts and the knowledge gained during the session.

We can also adapt this activity to have a purely Isle of Wight Rifles during WW1 focus



Evacuee Living History Week (June 18-22 2018): What was happening on the Isle of Wight at the beginning of World War II? Students can experience being evacuated by steam train from the Isle of Wight Steam Railway, have a World War II lesson interrupted by an air raid, play World War II games, learn more about rationing and taste wartime snacks. The half-day session will cost £9.00 per student including the train ride, but groups are welcome to stay all day.

On the Home Front (in school): This hour and a half session looks at how the war affected schooling and family life on the Island. Activities include air-raid practice, stirrup pump drill, playing with replica WWII reat toys and the investigation of many genuine World

War II artefacts.

ALL TIME PERIODS

Archaeology in Action (KS3 upwards): Students work in groups to 'excavate' their own mock test pit, date the layers by the finds and then re-group with rest of the class to work out the history of the whole site. This is a great way to examine primary evidence in an exciting and hands-on way.

Support this of the 1644
Charles! this Day I have received yours of the 17. of Oct. w^{ch} is
the only letter I have had from you, since your arrival in London, comes
too nothing of that particular account in writing w^{ch} he would
me of should have from 159-160. I have written so fully to you by
our former Dispatches Dated the 17. of Oct. that I have nothing
to add, but that the Treaty is prolonged for 14. Days; 159-160-161-
the 215-216-217-218-219-220-221-222-223-224-225-226-227-228-229-230-
particulars, I refer you to Oudart, whom I have commanded to
send you all our transactions 170-171-172-173-174-175-176-177-178-179-
21-22-23-24-25-26-27-28-29-30-31-32-33-34-35-36-37-38-39-40-41-42-43-44-45-46-47-48-49-50-
but to refer you to my former directions: So God bless you
Your loving Father
Charles

*If Osborne (who has been in
trouble for me about on Major
Dorridge business) comes to you,
use him well for my sake.*

KEY STAGE 4 and BEYOND

We are happy to adapt any of the workshops above to suit your needs. We have a wide variety of archives, research materials and sources available free of charge to support the curriculum. We are also looking for schools that would like to work with the HES to trial new workshops to support changes in the curriculum for this age group.

FREE SUPPORT AND ADVICE

We are very happy to offer advice on how the Isle of Wight Heritage Service can best support your school. We have a number of free resources that relate to the Island's heritage and offer free lesson preparation and pre-visit planning.

COST OF WORKSHOPS (SCHOOL, COWES MARITIME MUSEUM),

There is a charge of £90 per class (max 33 students) for all our activities Half days (morning or afternoon) will cost £150 and a whole day in school will cost £200. We are happy to develop new workshops to suit your needs.

COST OF WORKSHOPS (CARISBROOKE CASTLE MUSEUM)

We can deliver workshops in the museum all year round and provide you with self- led activities to guide you around the castle site before/after your workshop when the site is open to the public.

There is a charge of £90 per class (max 33 students) or £150 for two workshops for all our castle activities.

All visits will require an education permit from English Heritage in order to gain free entry into the castle.

Schools that do not require any input from the HES and would like a self-led visit at Carisbrooke Castle can still do so FREE of charge when the castle is open as part of English Heritage's free education visits offer. English Heritage also offers its own Discovery Visits at the castle. See their website for more information.

LOANS

We have hundreds of loan boxes that cover all periods of history. Loans can be delivered to and collected for the cost of £40 for up-to eight loan boxes (unless you have bought into one of our packages). Our loans catalogue and delivery dates can be downloaded from Carisbrooke Castle Museum's website or e-mailed on request.

Please get in touch if you would like more information or advice.



Estelle Baker, Heritage Education Service, Isle of Wight Heritage Service, based at Carisbrooke Castle Museum, Carisbrooke Castle, Castle Hill, Newport, Isle of Wight, PO30 1XY.

Tel: 0781 3021486 or 01983 523112,

Email: hes@iow.gov.uk Web: <http://carisbrookecastlemuseum.org.uk/schools/>