



**YOUR
FUTURE,
YOUR
OPTIONS**

POST-16

Contents

Introduction	3
Further Education College	4
Isle of Wight Further Education (FE) Colleges	4
Other Further Education Colleges.....	5
Curriculum	5
Qualification levels	6
Progression	7
How to find out about subjects/courses available and how to apply	8
Sixth Form	9
Our Isle of Wight Sixth Forms.....	9
Mainland Sixth Form and Further Education Colleges.....	9
Curriculum	10
Progression	10
T-levels	11
Apprenticeships	12
Local Training Providers.....	14
Labour Market Information.....	15



Island Futures

Skills & Participation

Introduction

We are Island Futures, which is part of the Isle of Wight Council. Our team's role on the Island is supporting young people with advice and guidance around career, job, training and education choices.

All our advisers have a great knowledge of what options are available to young people both on the island and the mainland.

Our careers advisers work in some of the schools and our progression coaches work in the community.

Flying Start Isle of Wight has been designed to help young people in Year 11 plan and prepare for life, study, and work after school. It gives the resources needed when considering a course at sixth form, college, apprenticeship or other employment options.



 island.futures@iow.gov.uk

 iwight.com/islandfutures

 01983 823888

 islandfutures

 islandfutures

Further Education College

Isle of Wight Further Education (FE) Colleges

The Isle of Wight has one general further education college, which is called The Isle of Wight College. It is quite a large college which provides a wide range of vocational courses at different levels, including a few at degree level (in conjunction with universities).

While the main IW College site is in Newport next to B&Q, the college also has a site at Whippingham called CECAMM which specialises in engineering courses.

There are several smaller specialist colleges on the Island. The first two in the list below offer full-time courses directly linked to the Isle of Wight College.

- UK Sailing Academy (UKSA) in Cowes,
- Platform One (Music College) in Newport.
- HTP Apprenticeship College in Newport offers full-time study courses in a range of vocational areas.



Other Further Education Colleges

Some students from the Island travel to further education colleges off-island for vocational courses. Colleges offer a wide range of courses; below are just a few examples. Our team can help you research which options would be right for you.

- Sparsholt College (near Winchester) which specialises in animal care and land-based courses including veterinary nursing, equine studies, agriculture, agricultural machinery, and fisheries. On-site accommodation is available at Sparsholt College – contact the college directly for costs and grants available.
- Dental nursing courses are available at Eastleigh College.
- Merchant Navy (Commercial Shipping) cadetships are taught through Warsash Maritime Academy in Southampton.
- The University Technical College (UTC) in Portsmouth provides engineering pathways and has strong links with the Royal Navy.

Curriculum

- All courses at the IW College are 'vocational' courses
- 'Vocational' means that the course is directed at a particular occupation or group of occupations and their skills.
- Vocational courses are available at different levels from 1 (pre-GCSE) through to 5 (degree level)

Qualification Levels

Level	Qualifications	Further information
1	<ul style="list-style-type: none"> GCSEs (grade 1 to 3) City and Guilds 1 NVQ 1 BTEC Introductory Diploma 	<ul style="list-style-type: none"> Ideal if you do not have the grades for a level 2 course or need to improve your English, maths or IT. No qualifications or previous experience required.
2	<ul style="list-style-type: none"> GCSEs (grade 4 to 9) City and Guilds 2 NVQ 2 BTEC First Diploma 	<ul style="list-style-type: none"> Most employers use this as their minimum entry requirement. Some experience may be required in the subject.
3	<ul style="list-style-type: none"> City and Guilds 3 NVQ 3 BTEC National Diploma 	<ul style="list-style-type: none"> For people wanting to progress on to university or supervising and training others. Qualification or experience in the subject.
4	<ul style="list-style-type: none"> A Levels Higher National Certificate (HNC) NVQ Level 4 Higher Level Apprenticeship Certificate of Higher Education 	<ul style="list-style-type: none"> HNC is the equivalent to the first year of a degree (further study can progress to HND or full degree). An advanced level qualification or substantial experience in the subject. Apprenticeship with Level 4 or 5 qualification; a combination of working and study.
5	<ul style="list-style-type: none"> Higher National Diploma (HND) NVQ Level 5 Higher Level Apprenticeship Foundation Degree Diploma of Higher Education 	<ul style="list-style-type: none"> Equivalent to the first two years of a degree (can be topped up with one more year to gain a full degree with a partner university).

- Level 1 is equivalent in standard to GCSE's at grade 3 (D), Level 2 = GCSE grade 4/5 (C), Level 3 = A-level, Level 4 = Foundation Degree/HND, Level 5 = Degree
- Courses at levels 1 and 2 are generally one year in length. Courses at level 3 are generally two years
- Vocational courses are unit-based, students complete a number of units depending on the course
- Vocational courses involve a lot of coursework and less exams than A-levels
- Vocational Level 3 courses give entry to university degree courses in related subjects (always check entry requirements)
- Vocational courses often have strong links to local employment opportunities
- Vocational course tutors have often worked in 'industry' related to the course they teach
- Functional Skills or GCSE Maths/English are studied alongside the vocational course

Progression

- Students can progress through to the next level of vocational course as long as they successfully complete their course to a high standard
- Students completing levels 1 and 2, may move on to apprenticeships or employment
- Students completing level 3 may move on to apprenticeships, employment or a university HND or degree in a subject related to the area they have studied
- Although vocational courses focus on a specific subject/career area, students also learn transferable skills – these are general skills which can be transferred to other occupational areas. It is not true, for example, that all students who study Travel and Tourism ultimately work in the tourism industry – they may enter all kinds of careers using the skillset they have developed



How to find out about subjects/courses available and how to apply

Apply now to college. Please check the websites below for details on how to apply and any closing dates.

Isle of Wight College

www.iwcollege.ac.uk

Havant & South Downs College

www.hsdc.ac.uk

CECAMM

www.cecamm.co.uk

Portsmouth College

www.portsmouth-college.ac.uk

HTP Apprenticeship College

www.htp.ac.uk

Highbury College

www.highbury.ac.uk

Platform One

www.platformone.org

Southampton City College

www.southampton-city.ac.uk

UK Sailing Academy

www.uksa.org

Brockenhurst College

www.brock.ac.uk

Military Preparation Training College

www.mpct.co.uk

Eastleigh College

www.eastleigh.ac.uk

Sparsholt College

www.sparsholt.ac.uk

Chichester College

www.chichester.ac.uk

Warsash Maritime Academy

www.warsashacademy.co.uk

Peter Symonds College

www.psc.ac.uk

UTC (University Technical College)

www.utcportsmouth.org

Richard Taunton College

www.richardtaunton.ac.uk

Itchen College

www.itchen.ac.uk

Sixth Form

Our Isle of Wight Sixth Forms

Sixth form consists of Years 12 and 13 (and sometimes Year 14). On the Island, all sixth forms are part of a wider school community, although they are not necessarily based on the same campus as the 'lower' school. The following schools have sixth forms

- Cowes Enterprise College, Ryde Academy
- The Island VI Form, Christ the King College

The following fee-paying schools have sixth forms:

- Ryde School with Upper Chine
- Priory School

Mainland Sixth Form and Further Education Colleges

Some students travel off the Isle of Wight for their sixth form studies. Many local mainland sixth forms are sixth form colleges, which are not attached to schools.

Students are responsible for their own travel costs but may receive some financial support. Commutable mainland sixth form colleges include:

- Havant and South Downs College
- Portsmouth College
- Richard Taunton's College (Southampton)
- Peter Symonds College (Winchester)
- Barton Peveril College (Eastleigh)
- Brockenhurst College (New Forest)
- University Technical College (UTC Portsmouth)
- Oaklands Sixth Form College

Check websites for application timelines.



Curriculum

A-Levels are exam based rather than coursework and take two years to complete. Students will have achieved relatively high GCSE grades if they are to be successful at A-level (at least 5 GCSE's at grade 9 to 5).

Students usually take three and occasionally four A-levels in subjects of their choice.

A-levels are available in a wide range of subjects; some of them are subjects that students may have studied at GCSE level already. Others may be new subjects for students.

Some students may have the option to combine a single or double BTEC level 3 or other vocational course with one or two A-levels rather than taking three full A-levels.

For more information on vocational courses see the **Further Education** pages.

- A-level passes are graded from A* through to E
- Universities attach 'UCAS points' to each A-level grade, which they may use to form an offer for entry to their degree courses.
- Some university courses require specific A-level subjects to have been studied. Always check degree entry requirements using www.ucas.com or university websites.

Progression

- A-levels involve the study of several different subjects, so they provide flexibility and breadth
- A-levels are academically rigorous, so they are well regarded by both universities and employers
- Some students take a 'gap year' following A-levels when they might travel or do temporary work
- Progression can be to university, although students can also progress to
 - ◆ An apprenticeship (a mixture of work and vocational training), or
 - ◆ Employment (a job)



T-levels

T-levels are new qualifications which are being phased in between 2020 and 2023. The first three T Levels are now available at selected colleges, schools and other providers across England.

A further seven T Levels will be available in September 2021 with the remaining courses starting in either 2022 or 2023.

T Level courses include the following compulsory elements:

- A technical qualification, which includes:
 - ◆ Core theory, concepts and skills for an industry area
 - ◆ Specialist skills and knowledge for an occupation or career
- An industry placement with an employer
- A minimum standard in Maths and English if students have not already achieved them

For more information on T-Levels, please visit www.tlevels.gov.uk.

A list of colleges currently providing T-levels is at the following website:

- <https://www.gov.uk/government/publications/providers-selected-to-deliver-t-levels>



Apprenticeships

What is an apprenticeship?

An apprenticeship combines employment with training. An apprenticeship can only be undertaken by after students have officially completed their statutory education (the last Friday in June of the academic year they turn 16).

The employer 'employs' the apprentice on a temporary contract as a member of staff, and pays them an agreed salary. Alongside working for the employer (doing a real job), the apprentice does part-time training to get qualifications which are related to the type of work they are doing.

How much does an apprentice get paid?

There is a national minimum wage (NMW) for apprentices. Employers can pay more than the minimum wage for apprentices, but this is for them to decide.

What qualifications does an apprentice do?

An apprentice would usually undertake a vocational qualification.

Some apprentices have a day-release to local colleges or training providers, other apprentices complete their qualification through on-the-job training and online portfolios. Degree apprentices attend a university part-time whilst they are working.

Alongside the main qualification, Functional Skills in Maths and English will also be studied unless the student has already achieved GCSE Maths/English at grade 4 or higher.

How long does an apprenticeship last?

This varies and can be anything from one to five years depending on the level of apprenticeship.

What levels of qualifications are there?

- A level 2 apprenticeship is known as an Intermediate Apprenticeship
- A level 3 apprenticeship is an Advanced apprenticeship
- A level 4 apprenticeship is a Higher Apprenticeship, and
- A degree level apprenticeship is a Degree Apprenticeship.



How old do I need to be to do an apprenticeship?

An apprenticeship can be undertaken at any time after the statutory school leaving date (last Friday in June of the academic year a student turns age 16). There are financial incentives for employers to take on apprentices before the age of 19.

Higher and degree level apprenticeships

These require a level 3 qualification to have already been completed, such as A-levels or a BTEC Level 3 or a level 3 Apprenticeship, so are usually open only to over-18 year olds.

There are no university tuition fees for degree level apprentices, as these will be covered by the employer

How to get an apprenticeship

The process is virtually the same as getting a job. The employer can set their own entry requirements. The candidate needs to apply, usually with a CV and/or application form, and go for a selection interview. For some companies, the process might involve a test of some kind.

Where are vacancies advertised?

As with jobs, apprenticeships are advertised in a number of places, and they change regularly

The sites below post the latest apprenticeship vacancies:

- www.gov.uk/apply-apprenticeship is the national government website for vacancies throughout England – for IW vacancies put the location as Newport, IW, and search within ten miles. Alternatively, search by a bigger distance and sort by nearest distance first
- www.isleofwightjobs.com is a local recruitment website which includes local apprenticeship vacancies
- www.iwcp.co.uk IW County Press newspaper carrying local job vacancies and sometimes apprenticeships
- www.iwight.com/islandfutures link to a weekly online bulletin which includes most of the local vacancies advertised on the three websites above.



Local Apprenticeships

HTP Apprenticeship College

Offering smaller group sizes. Flexible start dates. Tailored learning plans. A wide range of off-the-job training. Industry experienced tutor.

 www.htp.ac.uk

 01983 533926

 info@htp.ac.uk

SMART

A dynamic training provider approved by Ofsted, delivering high quality, Government-funded apprenticeship and traineeship programmes throughout England.

 www.smarttar.co.uk

 0330 088 0888

 info@smarttar.co.uk

CLC

CLC has developed methods of teaching to engage, challenge, inspire and encourage apprentices to learn from personal experience, taking a unique and innovative approach to teaching that helps learners connect with the subject matter they need to master.

 www.clcentre.co.uk

 01983 533993

 info@clcentre.co.uk

IW College

An apprenticeship is a genuine job and under all circumstances an apprentice will be employed from day one. Apprenticeships combine practical training in a job with study.

 www.iwcollege.ac.uk/apprenticeships/

 01983 526631

 info@iwcollege.ac.uk

IW Council

The benefits of an apprenticeship for the council are that it introduces new talent and gives the council fresh new ideas on how to become the organisation that future generations need. Unlocking talent within the local community helps to assist in the regeneration of the Isle of Wight by retaining skilled people.

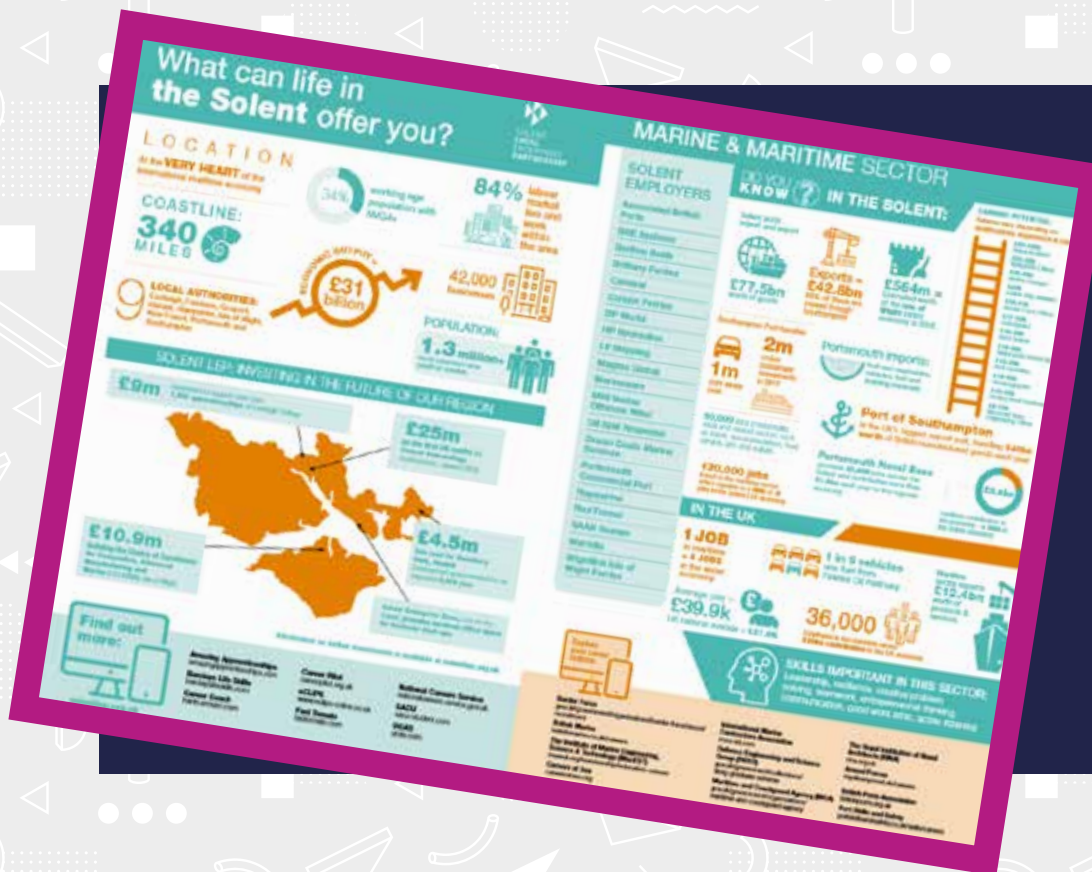
 [www.iow.gov.uk/Council/Recruitment-Opportunities/
Apprenticeships/About-our-Apprenticeships](http://www.iow.gov.uk/Council/Recruitment-Opportunities/Apprenticeships/About-our-Apprenticeships)

 01983 817280

Labour Market Information

Through the Careers Hub, Solent LEP has developed a suite of materials designed to help 'set the scene' of what the economy looks like. To view and download information around specific job roles, skills and employment trends visit:

<https://www.solentgrowthhub.co.uk/home/talent-and-training-2/solent-careers-hub/resources-bank/labour-market-information/>



Career Coach is a free online resource for everyone in Hampshire & Isle of Wight and can support you with finding out job profiles (including pay, working hours and entry requirements), an online assessment tool to help you start to consider what careers might suit you and a CV creator tool.

Career Coach is also useful to find out how much demand there is for certain jobs and can be bespoke to the Isle of Wight. <https://hants.emsicc.com/>



Island Futures


Skills & Participation

Island Futures

Isle of Wight Council
County Hall
High Street
Newport
Isle of Wight
PO30 1UD

 island.futures@iow.gov.uk

 iwight.com/islandfutures

 01983 823888

 [islandfutures](https://www.facebook.com/islandfutures)

 [islandfutures](https://twitter.com/islandfutures)

