

Isle of Wight Community Safety Partnership



Newsletter

Issue 1 3.8.17

Welcome to the first IOW Community Safety newsletter, which is part of the Partnership communications plan. The aim is to keep those living and working on the IOW informed of community safety related information.

The Community Safety Partnership will be publishing the 2017 strategic assessment shortly, this is the document which contains information and data on crime and disorder on the Island and helps to identify the partnership priorities.

The Community Safety team are looking forward to welcoming Claire Thomas to the team later this month. Claire will be the Project officer for the Local Alcohol Action Area programme which aims to reduce alcohol related crime and harm and develop a vibrant night time economy.

The newsletter will be circulated couple of months, if you would like to include something please let me know, we will carry out an evaluation of the newsletter and will be keen to hear views on what information to include.

For up to date community safety information please check the IOW Community Safety webpages [here](#)

The next meeting will be held on Thursday November 2017 at the Riverside Centre, Newport and will be open for the public to attend.

Updates from Community Safety Partnership

The strategic assessment has been carried out and will be published along with the strategic plan on the IOW Community Safety webpages shortly. The priorities to be agreed as follows:

1. Reduce reoffending
2. Reduce alcohol related crime
3. Respond effectively to ASB including hate crime and cohesion
4. Domestic abuse and sexual violence
5. Support delivery of Counter terrorism
6. Reduce violent crime
7. Serious acquisitive crime

A CSP communications plan is currently in progress which will enable all partners to work together on community safety media and messaging.

Minutes can be found [here](#)



Prevent Board

Meeting held in June. The level of threat and risk of extremism remains low on the Isle of Wight.

Prevent awareness training continues to be delivered and it has been recommended that youth clubs and organisations would potentially benefit from this.

The next WRAP (Workshop to raise awareness of Prevent) Train the trainer session will be held on 4th October 2pm at Thomson house.

Prevent is part of the governments counter terrorism strategy, the aim of which is to reduce the risk to the UK of terrorism by stopping people becoming terrorists in the first place. The programme has three main aims:

1. Respond to the ideological challenge of terrorism and the threat we face from those who promote it
2. Prevent people from being drawn into terrorism and ensure they are given appropriate advice and support; and
3. Work with sectors and institutions where there are risks of radicalisation that we need to address

In order to implement this training across the island we are asking people to attend a one day train the trainer event which will accredit delegates to then deliver basic Prevent Awareness to other staff within their organisation.

To book please contact learning.development@iow.gov.uk -this is free course.

For information on making a Prevent referral click [here](#)

Local Alcohol Action Area Programme

The programme aims to reduce alcohol related harm and crime and create a more diverse night time economy.

We are delighted to announce and welcome Claire Thomas as the Project Officer for the programme on a 12 month contract. Priorities are as follows:

- Community Alcohol Partnership
- Alcohol related domestic and sexual violence
- Alcohol related ASB
- Diversification of Night Time Economy

Claire can be contacted at Claire.thomas@iow.gov.uk should you have any enquiries in respect of the programme.

Isle of Wight Community Safety Partnership



Night Time Economy

NTE group is now meeting in Ryde and Newport, alcohol related violent crime has reduced and partners continue to work together to continue night time community safety.

The new venue in Newport, Fever has been welcomed to the group with current priorities including:

1. Working with transport providers to ensure safe dispersals when a venues close.
2. Pub watch to encourage members to report any assaults on door staff and ensure a duty of care for customers who are ejected due to drunkenness.
3. Encouraging take away food premises to engage with the group.

Joint Action Group ASB

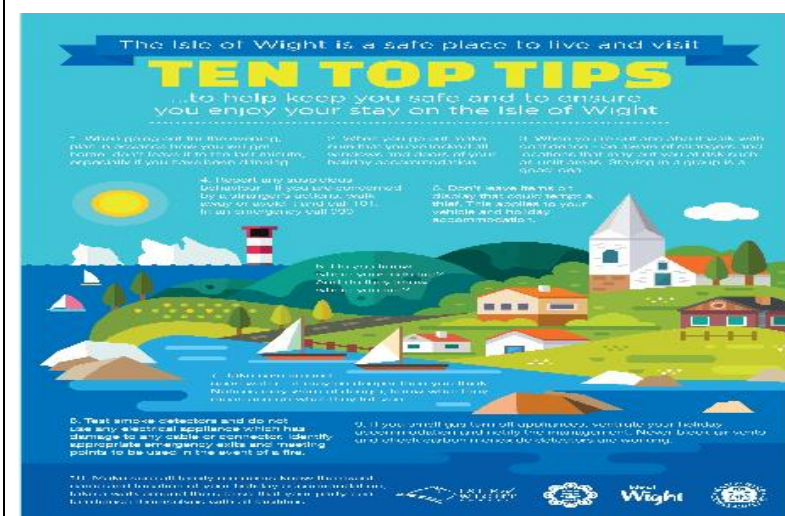
The Joint Action Group (JAG) ASB is updating their delivery plan to reflect the CSP strategic assessment and plan. Planned community engagement events have been planned during the summer to raise awareness of reporting ASB and also home crime prevention advice.

Demographics factsheet

A joint strategic needs assessment regarding demographics and population on the Isle of Wight has been compiled and is full of statically and local information which can be found [Here](#)

Community safety holiday tips

Please see the link [Here](#) for tips on staying safe during the holidays, please circulate to your networks



Isle of Wight Community Safety Partnership



Home crime prevention advice

The article below is useful in providing simple yet effective tips on how to protect your property and belongings which has been provided by Hampshire Constabulary. Please [Click here](#) to view the article which I hope you will find of value.

Criminal Exploitation of Children/ Vulnerable Adults guide

Below is an informative guide on Criminal Exploitation of children and Vulnerable adults which has been put together primarily for frontline staff who work with children, young people and potentially vulnerable adults. This includes professionals working in education, health, social care services, housing, benefits, law enforcement (police) and related partner organisations. To view the guide please [Click here](#)

Building cohesive communities- An LGA guide

I am delighted to introduce this new guidance from the Local Government Association on community cohesion.

The purpose of this guidance note is to support councils as they work on the frontline of this challenge, at the heart of their local places and communities. To view please [Click here](#)

Hate Crime Project

The second year of the hate crime community demonstration projects scheme has been launched, and the application window is now open. The aim of the fund is to work with communities affected by hate crime to fund the development of partnership projects that:

- prevent hate crime
- respond to hate crime in our communities
- increase the reporting of hate crime
- improve support for the victims of hate crime
- build our understanding of hate crime

The Home Office is looking for motivated and creative community groups to work in partnership with other organizations to develop projects that help to prevent hate crime and issues associated with it. The project development must involve stakeholders who are affected by, are past or potential perpetrators of hate crime, or those who support victims/perpetrators of hate crime.

The following [Link](#) contains further information about the scheme with the deadline being 15th September 2017 for applications.

Isle of Wight Community Safety Partnership



Good Neighbours- One World Week

Are you a good neighbour? Local One World Week events can explore how we can be “Good Neighbours” in our globalised 21st century world which is this year’s theme for the organisation. For more information, please [Click here](#) to view the organisations guide around good neighbours and [Here](#) for goals of the organisations event week on 22-29th October 2017.



Please feel free to send any feedback regarding this newsletter or any other articles you would like to see on this newsletter to Sarah.Maidment@IOW.GOV.UK