

## Isle of Wight Council

### Proposed Freshwater Neighbourhood Development Plan Referendum Information Statement

This statement has been prepared to meet regulation 4(3)(a) of the Neighbourhood Planning (Referendum) Regulations 2012 (as amended).

A referendum relating to the adoption of the Freshwater Neighbourhood Development Plan will be held on Thursday 8 March 2018.

The question which will be asked in the referendum is:

**Do you want Isle of Wight Council to use the Neighbourhood Plan for Freshwater Parish to help it decide planning applications in the neighbourhood area?**

The referendum area is identified on the map included within this information statement. It is the same area as that designated as the Freshwater neighbourhood area.

A person is entitled to vote in the referendum if on 20 February 2018:

- he or she is entitled to vote in a local government election in the referendum area; and
- his or her qualifying address for the election is in the referendum area. A person's qualifying address is, in relation to a person registered in the register of electors, the address in respect of which he or she is entitled to be registered.

The referendum expenses limit that will apply in relation to the referendum is £2,645.85p. The number of persons entitled to vote in the referendum by reference to which that limit has been calculated is 4,811.

The referendum will be conducted in accordance with procedures which are similar to those used at local government elections.

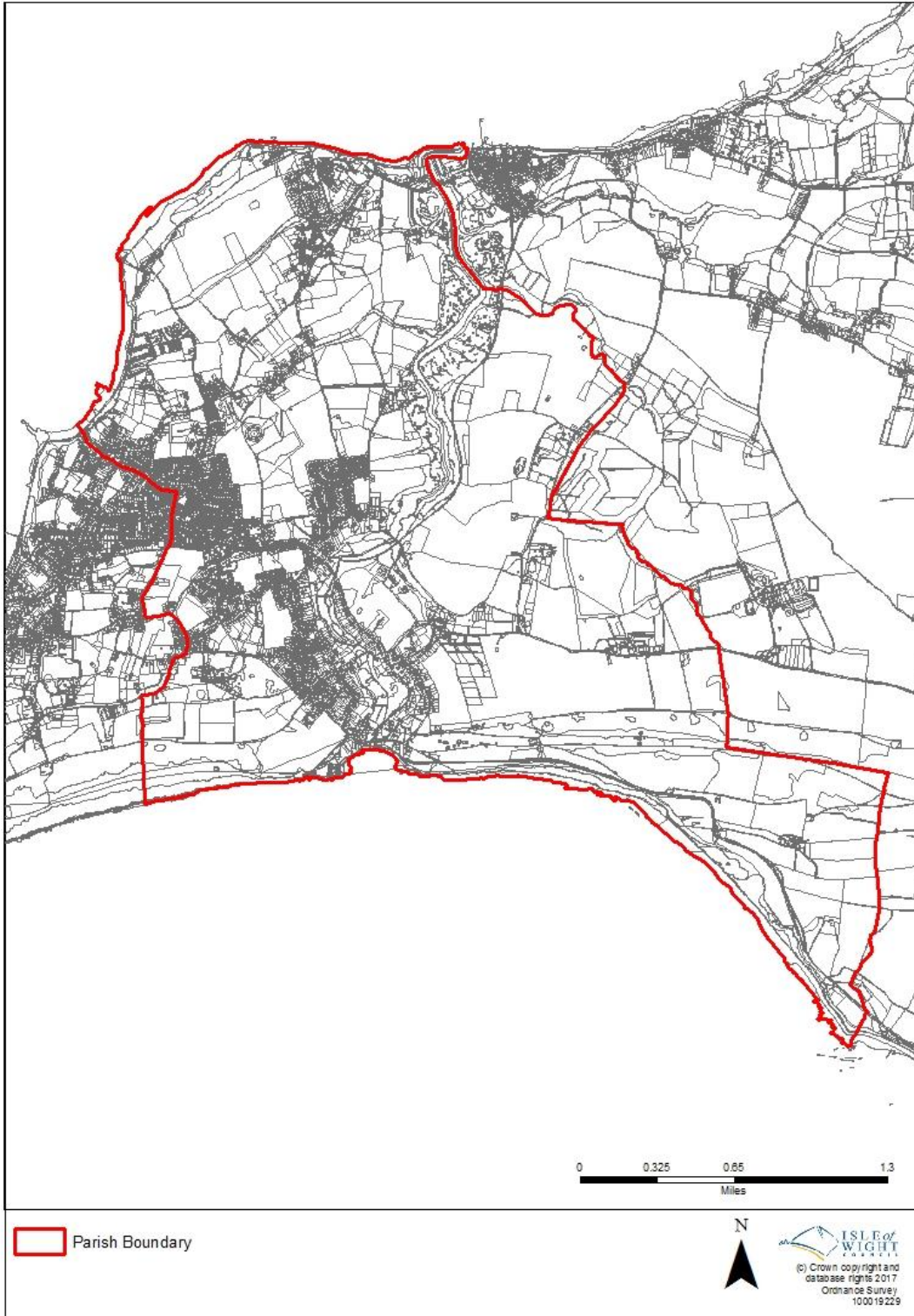
A copy of the specified documents, as listed below, may be inspected online at [www.iwight.com/freshwaterndp](http://www.iwight.com/freshwaterndp), or paper copies are available during advertised office hours at:

Planning Reception, Seaclose Offices, Fairlee Road, Newport, Isle of Wight, PO30 2QS

Freshwater Library, School Green Road, Freshwater, Isle of Wight, PO40 9AP

The specified documents are:

- The draft Freshwater Neighbourhood Development Plan;
- The independent examiner's report;
- A summary of representations submitted to the examiner;
- A basic condition statement; and
- A statement setting out general information on town and country planning and neighbourhood planning.



Referendum Area for the draft Freshwater Neighbourhood Development Plan