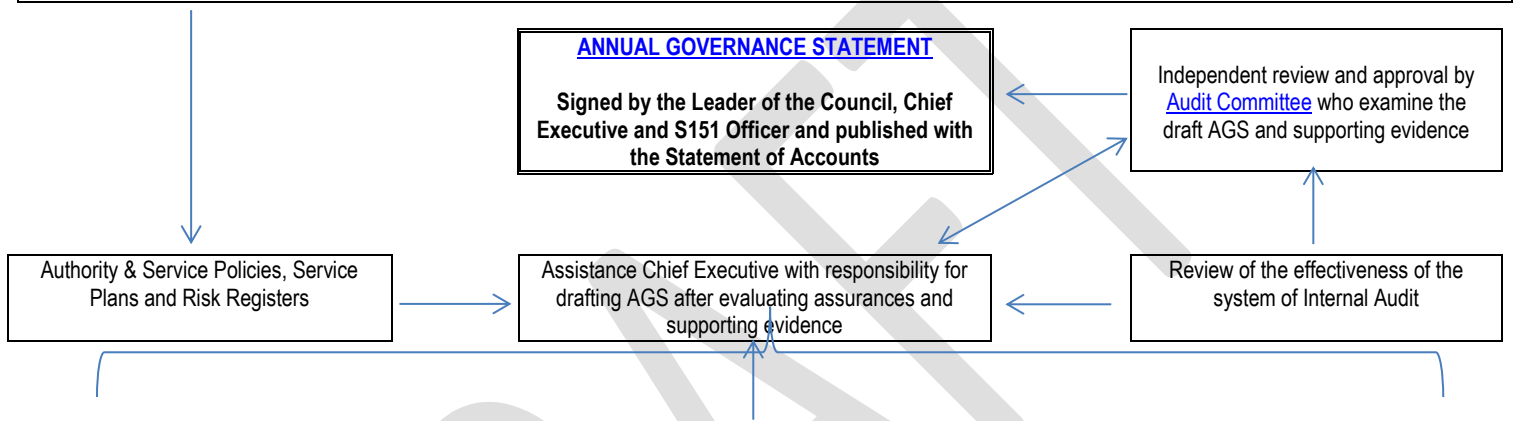


## IWC GOVERNANCE FRAMEWORK

<b>Documentation</b>		
<ul style="list-style-type: none"> <li>• <a href="#">Corporate Plan 2019-22</a></li> <li>• <a href="#">Service Business Plans</a></li> <li>• <a href="#">Performance Management Framework</a></li> <li>• <a href="#">Risk Management Framework</a></li> <li>• <a href="#">Programme Management Framework</a></li> <li>• <a href="#">Project Management Framework</a></li> <li>• <a href="#">Access to Information Policy</a></li> <li>• <a href="#">Forward Plan</a></li> <li>• <a href="#">IWC Terms and Conditions /Contracts of Employment</a></li> <li>• <a href="#">Pay Policy</a></li> <li>• <a href="#">Capability Policy</a></li> <li>• <a href="#">Disciplinary Policy</a></li> <li>• <a href="#">Gifts and hospitality Guidance for staff and members</a></li> <li>• <a href="#">Member code of Conduct</a></li> </ul>	<ul style="list-style-type: none"> <li>• <a href="#">Anti-Money Laundering Policy</a></li> <li>• <a href="#">Behaviour Framework</a></li> <li>• <a href="#">Counter Fraud and Corruption Strategy</a></li> <li>• <a href="#">Data Protection Policy</a></li> <li>• <a href="#">Privacy Impact Assessment</a></li> <li>• <a href="#">Employee Code of Conduct</a></li> <li>• <a href="#">Recruitment Policy &amp; Procedure</a></li> <li>• <a href="#">Equality Policy Statement &amp; Guidance</a></li> <li>• <a href="#">Procurement Strategy</a></li> <li>• <a href="#">Whistleblowing Policy</a></li> <li>• <a href="#">Protective marking Policy</a></li> <li>• <a href="#">Portable File Storage Policy</a></li> <li>• <a href="#">Equality Impact Assessment Guidance</a></li> <li>• <a href="#">Constitution</a></li> </ul>	<ul style="list-style-type: none"> <li>• <a href="#">Medium Term Financial Plan</a></li> <li>• <a href="#">Treasury Management Strategy</a></li> <li>• <a href="#">Charging Policy</a></li> <li>• <a href="#">Complaints Policy</a></li> <li>• <a href="#">Contract Standing Orders</a></li> <li>• <a href="#">Corporate Retention Policy</a></li> <li>• <a href="#">Financial Regulations</a></li> <li>• <a href="#">Information Security Policy</a></li> <li>• <a href="#">Pension Fund Governance Policy</a></li> <li>• <a href="#">Workforce Plan</a></li> <li>• <a href="#">Electronic Communications Policy</a></li> <li>• <a href="#">ICT Security Policy</a></li> <li>• <a href="#">Social Media Policy</a></li> <li>• <a href="#">Town &amp; Parish Council Protocol</a></li> </ul>



<a href="#">Performance Management &amp; Data Quality</a>	<a href="#">Risk Management</a>	<a href="#">Information Governance</a>	<a href="#">Legal and Regulatory Assurance</a>	<a href="#">Members Assurance</a>
<ul style="list-style-type: none"> <li>• Service Board Reports</li> <li>• <a href="#">Quarterly Performance Reports</a></li> <li>• Benchmarking Clubs</li> <li>• Personal Performance Reviews</li> <li>• Job descriptions</li> <li>• Corporate Induction</li> <li>• Corporate Management Team Schedule of Meetings</li> </ul>	<ul style="list-style-type: none"> <li>• Service Risk Registers</li> <li>• <a href="#">Strategic Risk Register</a></li> <li>• Project Risk and Issues Logs</li> <li>• Service Board Reports</li> <li>• Training</li> </ul>	<ul style="list-style-type: none"> <li>• Training Programme</li> <li>• Department Information Guardian Meetings</li> <li>• Data Sharing Agreements</li> <li>• Information Governance Group</li> <li>• Information Security Group</li> </ul>	<ul style="list-style-type: none"> <li>• <a href="#">Sections of Committee Reports</a></li> <li>• Legal Advice</li> <li>• Equality Impact Assessments</li> <li>• <a href="#">Transparency reports</a></li> <li>• <a href="#">Register of interests</a></li> <li>• <a href="#">Whistleblowing reports</a></li> <li>• <a href="#">Call over processes</a></li> </ul>	<ul style="list-style-type: none"> <li>• <a href="#">Scrutiny Committee</a></li> <li>• <a href="#">Cabinet Committee</a></li> <li>• <a href="#">Audit Committee</a></li> <li>• <a href="#">Appeals Committee</a></li> <li>• <a href="#">Member Induction</a></li> <li>• <a href="#">Member training programme</a></li> <li>• <a href="#">Corporate management team/Cabinet Meetings</a></li> <li>• <a href="#">Health and Wellbeing Board</a></li> </ul>
<a href="#">Assurance by Directors/Heads of Service</a>	<a href="#">Other Sources of Assurance (including third party)</a>	<a href="#">Financial Management</a>	<a href="#">Internal Audit</a>	<a href="#">External Audit</a>
<ul style="list-style-type: none"> <li>• <a href="#">Peer Reviews</a></li> <li>• Benchmarking club membership/reports</li> <li>• Corporate Management Team meetings</li> </ul>	<ul style="list-style-type: none"> <li>• Regulatory body Inspections</li> <li>• <a href="#">Ombudsman Reports</a></li> <li>• Equality &amp; Diversity Board</li> <li>• Staff Equality Group</li> <li>• Health and Safety Board</li> <li>• Vine Staff Newsletter</li> <li>• Manager's briefings</li> </ul>	<ul style="list-style-type: none"> <li>• Capital Programme</li> <li>• Service Board Reports</li> <li>• Treasury Management</li> <li>• Statement of Accounts</li> <li>• Statutory Returns</li> <li>• Outturn Reports</li> </ul>	<ul style="list-style-type: none"> <li>• Annual Plan</li> <li>• <a href="#">Periodic reporting to Audit Committee</a></li> <li>• <a href="#">Risk-based audit plans</a></li> </ul>	<ul style="list-style-type: none"> <li>• Annual Plan</li> <li>• <a href="#">Annual Audit and Inspection Letter</a></li> </ul>

Ongoing assurance of effective control over key risks