


	<h1>Notes</h1> 
<b>Name of Meeting:</b>	Isle of Wight Council (IWC) Environment & Sustainability Forum: Green Impact, TFMZ, Biosphere Festival
<b>Date and Time:</b>	12 <sup>th</sup> June 2025, 18:00 – 19:30
<b>Chair:</b>	Alaster Sims – Service Manager for Climate, Coast and Environment
<b>Attendees:</b>	Katy Hurd; Ian Ward, Ella Clapham, Sarah Talbot, Paul Fuller, Penny Acton, Rob SAven, Jonathon Bacon, Amelie Owen, Nora Clinton, Paul Ofei-Manu, Vanessa Churchman, Claire Critchison, Ian Wrd, Marianne Sullivan, Tom Murphy.
<p><b>Ella Clapham – Economic Development Manager – Skills &amp; Employment</b></p> <p>The <b>Green Impact programme</b> is a sustainability initiative that supports organisations in improving their environmental and social practices. The IW Council has fully funded this initiative for a number of years on the Isle of Wight so that all businesses have the opportunity to take part.</p> <ul style="list-style-type: none"> <li>• It provides a practical framework to help organisations make positive change.</li> <li>• Sustainability focused activities, guided by easy to use online toolkit</li> <li>• Trained student auditor (from the IW College) will verify your work at the end.</li> <li>• Customised for the Isle of Wight, with local support and recognition.</li> <li>• The toolkit is organised into different themes – each focusing on a key element of sustainability. (e.g. energy, water and procurement)</li> <li>• UN Award winning programme. Started in 2006. Now organised by Students Union</li> <li>• Internationally - Used by 2046 organisations, 4442 teams participating. 2 million people engaged with over 45,5000 actions projects completed to date.</li> <li>• On the Island its been run on the Island for 5 years. In 2024, 13 teams were formed, reaching 5746 colleagues.</li> <li>• <b>Why take part?</b> - There is plenty more impact to be made locally. A great chance to make a real measurable difference, it will be supporting the IW sustainable development goals. Getting out into nature and team building.</li> <li>• Designed to work to you – Add value and be supportive. No requirement to commit to a set amount of hours a month- you can complete at your own rate.</li> <li>• Encourages collaboration, resource savings, and customer engagement</li> <li>• <b>Top Tip</b> – filter for the subject you are interested in to start with an pick some low hanging fruit</li> <li>• <b>Top Tip</b> – Go through the toolkit and click N/A on any that your business could not support</li> <li>• <b>Recognition</b> - Digital badges are provided to celebrate your achievements after the end of the programme.</li> <li>• <b>Q&amp;A</b></li> <li>• Q: Can schools take part? A: Schools can take part yes</li> <li>• Q: Looking to enter with Gurnard Parish Council, is this possible? A: Its applicable and available to any organisation</li> <li>• POM - Interested in doing it for the Trust. Will look into it further</li> <li>• RS - Net Zero Business Hub on Friday, would like to invite Ella to the meeting to help Green Impact expand into more areas.</li> </ul>	
<p><b>Rob Sauven – Biosphere CLG - Centrica Grant for and Energy for Tomorrow project</b></p>	



- The Biosphere CLG won a Centrica grant – ‘Energy For Tomorrow’ which was seeking projects, initiatives and ideas that can accelerate the energy transition. – for more information on this grant please click here: [Energy for Tomorrow](#)
- When applying RS explained how interconnected the Island is within its varied communities. Used Biosphere CLG as Fund Applicants with a partnership approach with Together for Mission Zero (TFMZ) and Grow Gurnard and Green IOW and Parish Futures and the Doughnut Group.
- **Vision:** A Fairer, Nature Positive, Net Zero Island. Tackling three interconnected priorities: healthy food, healthy homes, and engaged youth.
- **Challenges Addressed**
  - Poor housing and nutrition linked to poor health and education outcomes.
  - Isle of Wight has some of the worst EPC ratings
  - Fastest declining youth population in the UK, with many feeling unheard.
- **Project Pathways**
  - **Nutrition Pathway**
    - Grow Gurnard: A 1-hectare community farm using a “Shared Harvest” model.
    - Needs solar-powered water infrastructure (£25,000).
    - Engaged 300+ community members; expanding to 4 more parishes.
  - **Energy Pathway**
    - Focus on refurbishing homes to reduce carbon and fuel poverty.
    - Delivered through trusted community engagement and partnerships (Parishes).
  - **Youth Pathway**
    - Partnering with Youth Trust to run climate workshops.
    - Youth-led events and initiatives to amplify local voices, co-design a climate led project.
  - **Community Coordinator**
    - Community Coordinator role funded (£35,000) for 18 months.
    - Will oversee planning, engagement, training, and communications.
    - Parish-level volunteer coordinators to sustain momentum.
- **Timeline & Milestones**
  - Kick-off: Sept–Dec 2025
  - Implementation: Jan 2026–June 2027
  - Evaluation: March 2027
  - Includes 7 youth workshops, 7 housing events, borehole installation, and community reporting.
- **Expected Outcomes (18 Months)**
  - Deep engagement with 7 parishes.
  - Events and refurbishments in each parish.
  - 70 homes improved.
  - 7 youth climate recommendations implemented.
  - 2 new growing projects launched.
  - Community leads established and knowledge shared via workshops/webinars.
- **Q&A**
- Q: AS – would it be possible to include the social prescribers please when reaching out to at risk community members? RS: Yes great idea.
- KH – Suggested The Hive and Godshill Matters as possible groups to engage with – KH to put them I touch with RS.
- P-OM – Clarification on reaching those in need.



- RS – Yes the hope is to ask the Parish Councillors to reach out to the people in their community who you. We have the lowest take up of these grants in the South – yet we have the worst housing by EPC in the South and greatest deprivation. All the right needs but the worst take-up.
- PA – Ella and Rob should get together and feed into the future student assessors who may be good at furthering things. In terms of getting parish councils on board – how much could you actually replicate this sort of thing and present to a Parish Council. It is difficult to convince people that these things are out there.
- RS – Really open to any ideas. First starting point will be a presentation to IWALC and then say to them, we can only do 7, and we want Parishes to be proactively engaged with us. If you are pro-active about it, our offer is to bring the coordinator and green wight along with us – but we need your knowledge to get people to the Parish Hall.
- PA – IWALC you wont get many attendees. Could you hold a bigger meeting maybe for West Wight and get them to join together for something. Concerned one person won't be able to sway a Council to take part.
- RS – Yes open to suggestion – over the next 2 months they will be designing it. So those sorts of ideas are wonderful.

### **Biosphere Festival – Martha Henson**

- The **Isle of Wight Biosphere Festival** is a nine-day celebration of the island's UNESCO Biosphere Reserve, featuring over 60 free or low-cost community-led events, including nature walks, art, music, storytelling, science, and sustainability workshops, designed to inspire connection with the island's unique landscapes and vibrant local culture.
- Last year 57 events – distributed festival – organisation and individuals of any type are invited to put on a biosphere festival event – as long as it is within the biosphere principles. Around 4,000-5000 took part last time, but people said they wanted to go over a longer period of time to be able to get to more events.
- Local nature, community organisation, faith, art, cultural and heritage places.
- Martha went through the programme.
- If this all works out this year there is lots of scope for organisation to get involved. There is space for more now its over 9 days – defo more room for evening events and entertainment.
- We're currently seeking help with distribution. If you can take printed programmes or posters, please get in touch—we can arrange for you to receive materials.
- If you're connected to internal networks (e.g. school newsletters, community groups), please help us spread the word. We have posters, on-screen graphics, and other promotional content ready to share.
- Please share the festival website widely, getting people to visit it is key to the festival's success.
- We're already thinking ahead to next year and hope to make this an annual event.
- The festival has so far been supported by small donations, but to grow and become more sustainable, we're looking for additional sponsorship and ideally a coordinator role to support delivery.
- We plan to hold the festival around the same time next year, avoiding clashes with other major events like the Isle of Wight Festival.
- Do have the Biosphere Birthday on 19<sup>th</sup> June – but it clashes with IW Festival.
- **Q&A**
- PA – concerned over road closure. MH – We are not expecting thousands of people – we won't be adding to traffic. If we know there are easier or worse times, then Martha will include it on comms.
- POM – considering the various locations – was consideration given to sustainability context (bus routes for example)?
- MH – Its difficult because we do not control individual events. Within the guidelines we asked people to consider their impacts. Did try to ask SV for discounts – but not achieved. But there is more we could do and will explore that in the future.



- POM – could there be an opportunity to create awareness during the events to let people know as they move around to make them aware of what they could do in their surroundings.
- EC - suggested getting people to use the bus to get to Cowes as it avoids diversions.
- IB- has been trying to get the IW Festival to give the Biosphere Festival a shout out.

#### AOB

- MS – would like an update on the Round the Island Footpath (King Charles Coastal Footpath), big chunk missing due to landslides – what is the situation about getting it mended? Gap between crab and lobster and holiday camp?
- AL - will get an answer to that question and reply to Marianne.

**(Post Meeting – please find updates via this web link: [King Charles III England Coast Path: Isle of Wight - GOV.UK](#))**

- PF – Had a meeting of ‘local access forum’ yesterday, where Natural England gave a presentation on where the routes are going to go. Delayed for so long due to E.Cowes and Wootton. Now looking at an 8 week consultation shortly. At the moment a lot of the route is inland due to coastal erosion. There was a belief that there might be a potential once land has settles to move it again, but the land is still on the move.

<b>Upcoming Events</b>	<b>Biosphere Festival: 28 June - 6th July.</b>
<b>PSQ:</b>	None
<b>Next Meeting</b>	14 <sup>th</sup> August 2025 – 2pm



## We will cover:

1. What is the Green Impact Programme?
2. Why It Matters (International & Local Impact)
3. What's In It for You? (Why You Should Take Part)
4. How It Works (Toolkit & Support)
5. Joining the Movement

The logo for greenimpact, with 'green' in green and 'impact' in white on a dark blue background.

STUDENTS  
ORGANISING FOR  
SUSTAINABILITY  
UNITED KINGDOM



- Green Impact offers a framework and support to tackle sustainability issues within your organisation and recognises you for making an impact.
- You implement a set of positive sustainability activities, using our online toolkit to guide you and track your progress.
- A student auditor will go through all your work with you at the end of the year and verify your award level.
- Dedicated Isle of Wight Green Impact Programme bespoke to our local area



There are different themes within the online toolkit that cover different areas of sustainability.

You can work through the actions in any order based on your sustainability priorities and the nature of your business.

The actions are designed to meaningfully support the sustainability of your business, the Island, and the wider community.

Energy

Water

Procurement





# green impact /

## Green Impact on the Isle of Wight in numbers 2024



18 students  
attended IEMA-  
approved auditor  
training and  
audited at least  
one project

All 17 of the  
Sustainable  
Development Goals  
were addressed by  
actions taken

572 actions were  
completed that  
address SDG 11:  
sustainable cities  
and communities



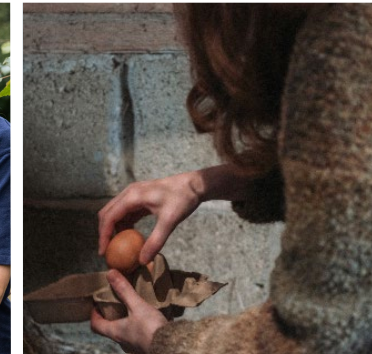
9 businesses now  
generate  
renewable energy  
on site

193 criteria were  
completed on the  
online toolkit,  
supporting a  
holistic approach to  
sustainability

13 teams have  
formed Green  
Impact  
committees,  
with members  
from across the  
businesses



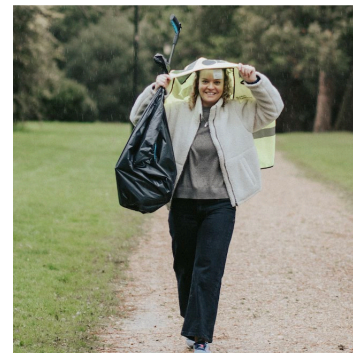
15 teams took  
steps to  
encourage natural  
biodiversity on  
their grounds



5 teams  
participated in or  
organised at least  
one beach clean



5746 colleagues  
were reached  
through Green  
Impact activities



1073 actions  
were completed  
by businesses and  
verified by  
student auditors

15 teams are on a  
Gold standard  
green electricity  
tariff



611 actions were  
completed that  
address SDG 12:  
Responsible  
consumption and  
production



# Why should you take part?

- Make a tangible impact on the Island's environment and society
- Supporting the Isle of Wight's sustainability ambitions
- Staff professional development and workplace learning
- Get recognised with a Green Impact award
- Potential to save money and resources
- Share good practice and work with new people
- Responding to customer demand



2024 Awards





**green impact**



# Designed to work for you

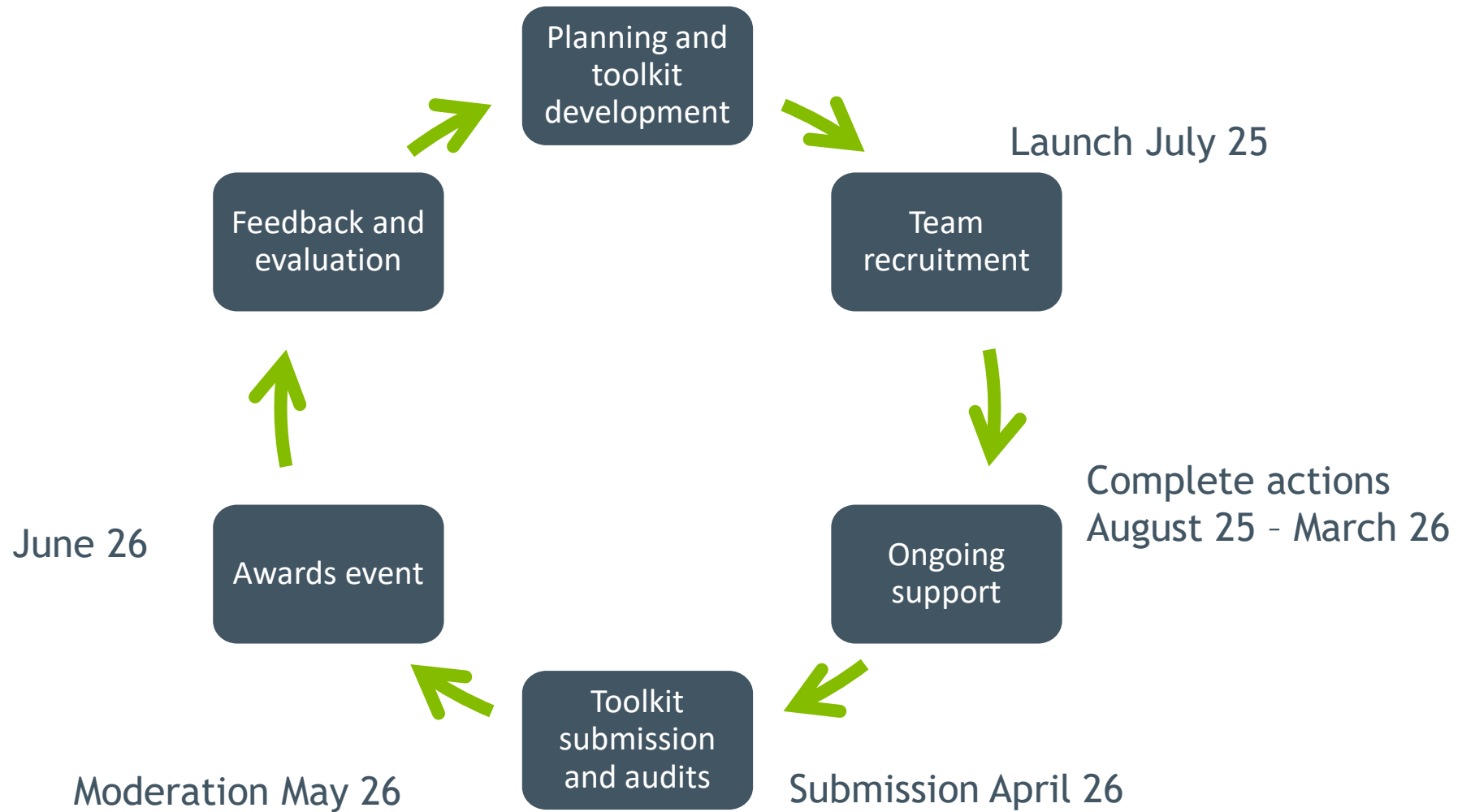
- You do not have to spend a certain number of hours each week/month - complete relevant actions when you can
- Get others involved in your team
- Even if you don't get enough points for an award, you will still be recognised for starting the journey and making an impact
- Green Impact is designed to promote continual development





# The programme cycle

**green impact**

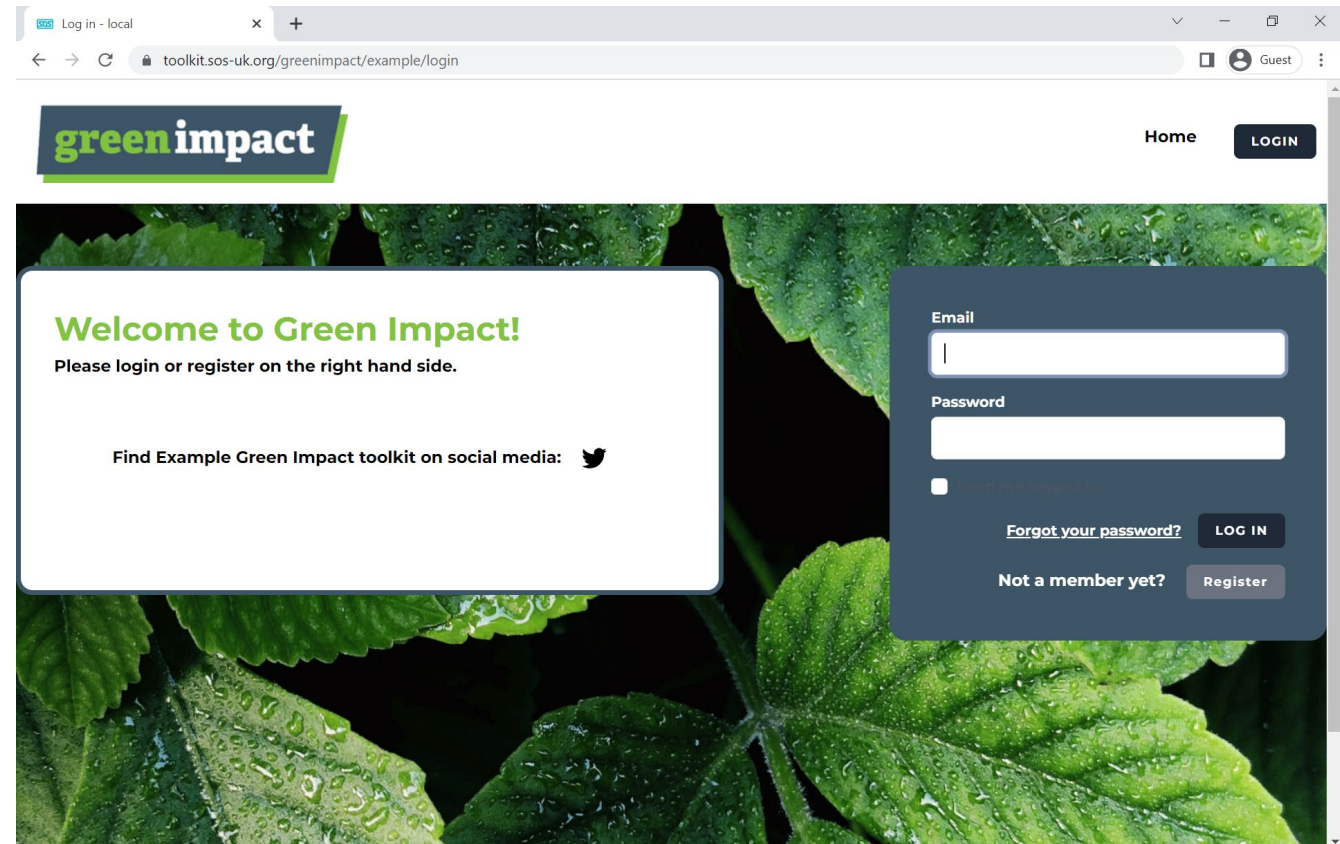




# How do I get started?

greenimpact

- Register your business team on the [Green Impact toolkit](#) (or you can join an existing team if one is already set up)
- Gather interest from your colleagues or volunteers - as many people can register online and join your team to support you.
- We'll be in touch with support and guidance throughout the year - keep an eye out for communications from us!
- You'll have until **April 2026** to complete actions, and we'll send reminders with information on audits and awards.





# The online toolkit

greenimpact

Everyone who joins your team will view the same toolkit and be able to see your team's progress, meaning you can all collaborate and delegate the actions within the toolkit.

The screenshot shows the Green Impact online toolkit dashboard. At the top, there is a 'greenimpact' logo and a 'Supported by' section featuring the 'ISLE of WIGHT COUNCIL' logo. In the top right corner, there is a user profile icon labeled 'EC' and a settings gear icon. The main content area is titled 'Dashboard' and includes a welcome message to 'Ella'. It instructs users to 'Access your toolkit on the left hand menu.' and provides a welcome to the dashboard. Below this, it explains that users can edit their profiles in the top right, view starred and assigned actions, and find new actions by clicking 'toolkit' on the left hand menu. It also mentions filtering actions by sector and themes. A call to action at the bottom of the main content area asks for further help, directing users to the FAQ page or to contact a Project Manager from SOS-UK at [Holly.Jenkins@sos-uk.org](mailto:Holly.Jenkins@sos-uk.org). On the left side, there is a green sidebar menu with four items: 'Dashboard' (with a grid icon), 'Toolkit' (with a wrench icon), 'Isle of Wight', and 'FAQs' (with a question mark icon). On the right side, there is a 'Leaderboard' section titled 'Top ten teams.' with a trophy icon. It includes a checkbox for 'Show me my team's league position'. Below this is a table of the top ten teams.

Rank	Team Name	Score
1 <sup>st</sup>	Cowes Harbour Commission	14
2 <sup>nd</sup>	Bereavement Services (IWC)	8
3 <sup>rd</sup>	Building 41	5
4 <sup>th</sup>	Example team (do not join)	0

At the bottom of the dashboard, there are two tabs: 'Starred Actions' with a star icon and 'Assigned Actions' with a checkmark icon.



# Completing actions



Dashboard

Toolkit

Isle of Wight

FAQs

Isle of Wight 2025 Toolkit

Team: Building 41

All the available actions in your toolkit can be seen below. Not all actions will necessarily be relevant to you, so you can use the filters to find and sort the actions. You can also star actions for easy access on your dashboard, and assign actions to other team members (assigned actions will also appear on the dashboard).

Filters

Area

Theme

Status

Assigned To

SDG

Starred

Seeing 195 results based on current applied filters.

Sort: 

X

☆ EC008

Non-sector specific

Domestic business

Embedding Sustainability

Multi-person business

Non-domestic business

Criteria

Further information

How you will be audited

Comments & evidence

The business has invited all staff, and where appropriate visitors, to feedback ideas for improving sustainable practices across the business within the last 12 months, and has implemented at least one of the ideas.

11 SUSTAINABLE CITIES AND COMMUNITIES

17 PARTNERSHIPS FOR THE GOALS

Total Points: 5

N/A

NOT DONE

IN PROGRESS

DONE

Assigned to: Ella Clapham





# Audits

And at the end of the year, a trained student auditor will review your work with you to verify your achievements and determine your award level – giving you formal recognition for your efforts.



Student Auditor Training,  
IW College



# Getting your award

You can get a Bronze, Silver, Gold, or Platinum award, based on the impact and effort of your Green Impact activities.



- Bronze - Score at least 100 points on the online toolkit;
- Silver - Score at least 200 points on the online toolkit;
- Gold - Score at least 300 points on the online toolkit
- Platinum - Score at least 500 points on the online toolkit.





# Gaining recognition and communicate your efforts

**greenimpact**

All Green Impact team members and student auditors receive a digital badge to showcase their personal and professional development.

All award-winning Green Impact teams also receive a recycled slate award to display in their department or area of work.



Green Impact

**BRONZE AWARD 2023**

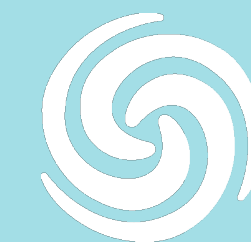
Delivered by Students Organising for Sustainability - UK





# Energy for Tomorrow

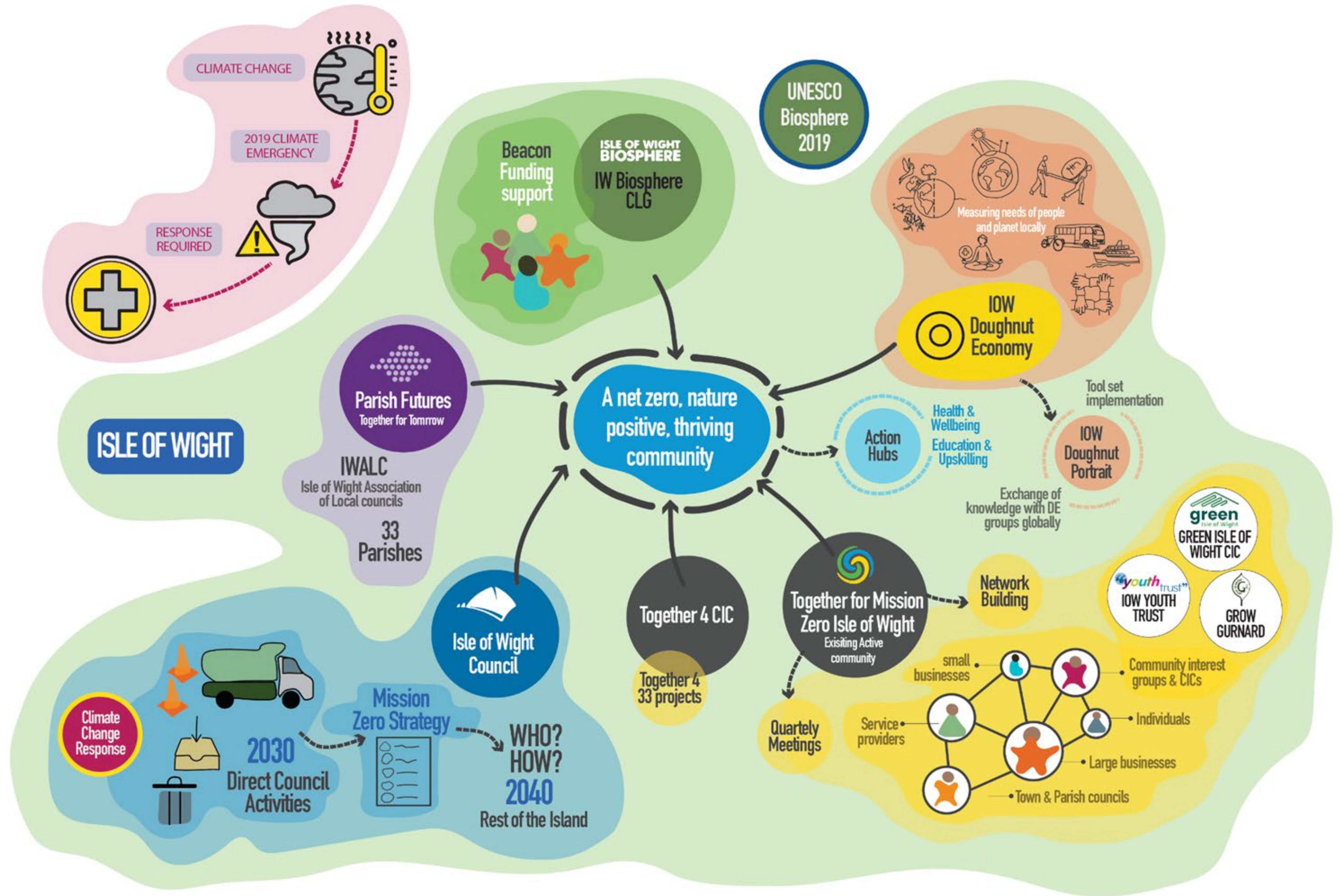
The Isle of Wight – UNESCO Biosphere Reserve



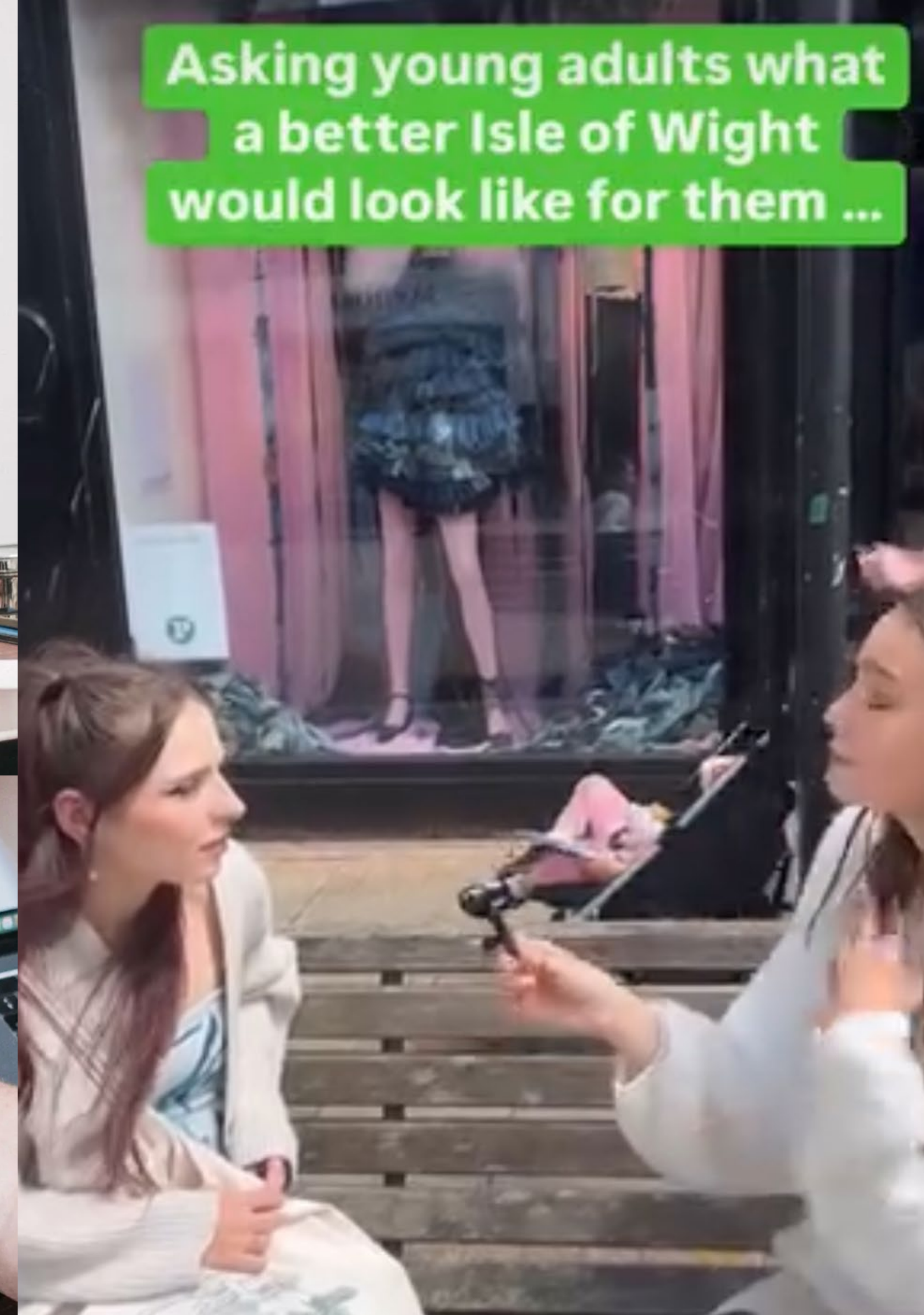
TOGETHER  
FOR MISSION  
ZERO Isle of Wight

ISLE OF WIGHT  
BIOSPHERE









Solar pumped Water  
at Grow Gurnard

Refurb housing to  
lower carbon footprint &  
mitigate fuel poverty

Youth Voice for action on  
climate change.





## GROW GURNARD

Capital expenditure  
£25,000

- Solar pump
- Battery storage
- Water tank
- Bore hole
- Security Fencing

# 1 Water for the community farm



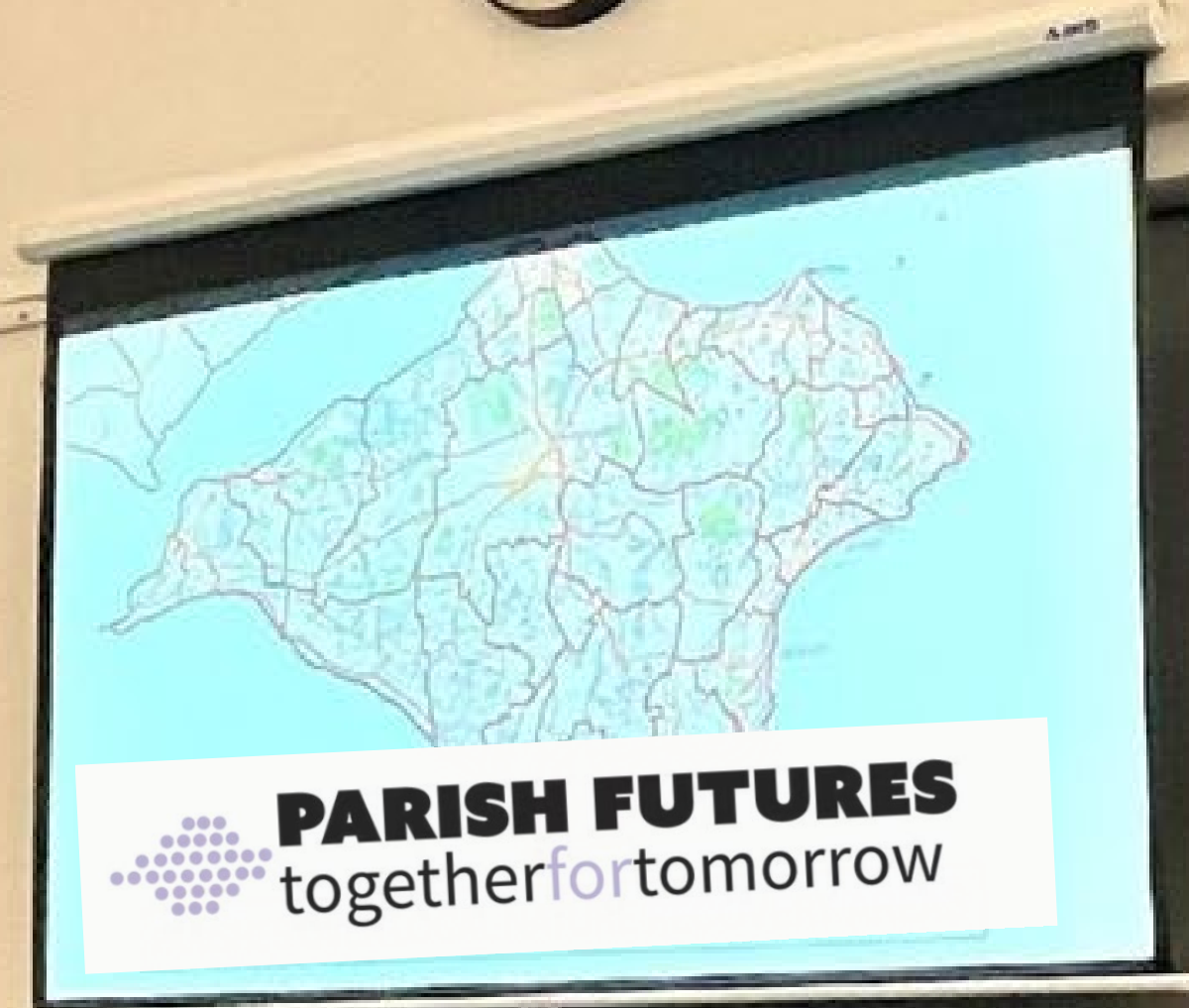
# COMMUNITY COORDINATOR

## Expenditure £35,000

- 2 days per week for 18 months: Partner with TFMZ; Grow Gurnard; Green loW and Parish Futures to deliver the program.

- Scope:

1. Plan program and engagement events
2. Prepare & deliver the overall project to the Parish forum
3. Down select 7 parishes
4. Coordinate and plan initiatives with TFMZ, Grow Gurnard, Green loW and YT
5. Oversee training of the volunteer coordinators
6. Plan the website/workshops for wide learning



# 2 Funding for Community Coordinator



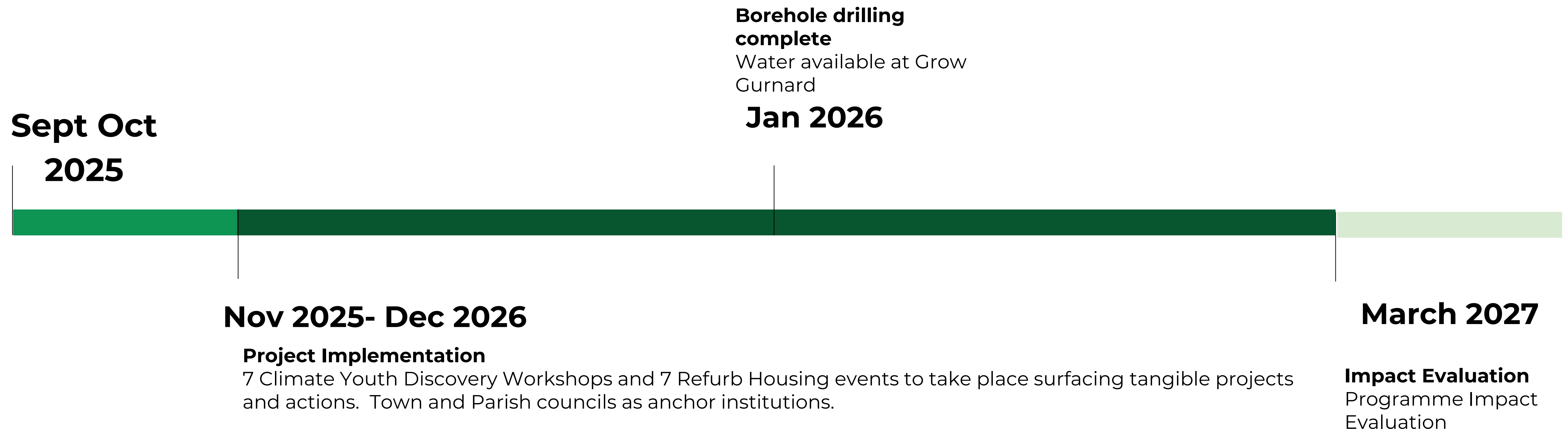
# 18 Month Delivery Plan

## Project Kick -off/ Recruitment & Engagement

Co-ordinator recruitment and onboarding.  
Research and quotations borehole contractors.  
Partnership agreement with parishes, Green IOW

# Measuring the Impact

1. Numbers of homes and people connected with
2. Number of refurb actions in progress
3. Youth engagement and initiatives agreed
4. Feedback and learning for wider role-out
5. Effectiveness of communication workshops/webinars.
6. Success in training of volunteer coordinators





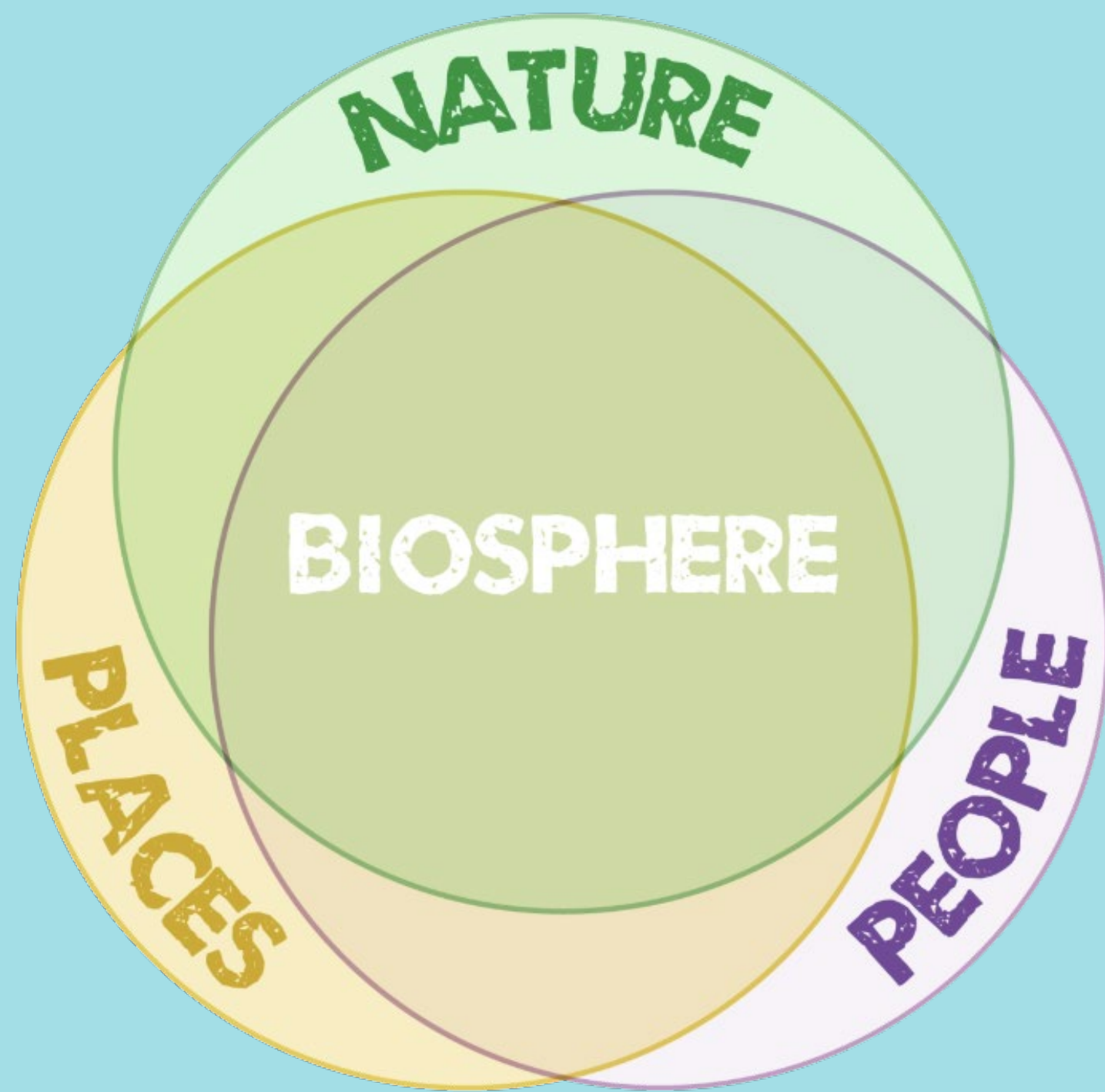


In 18 Months...

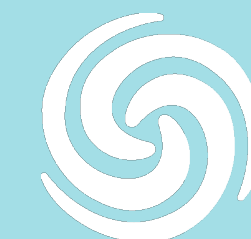


# ENERGY FOR TOMORROW

## Improving lives Strengthening community



- A resilient net zero system enabling a community farm to thrive and show others the way.
- Communities and families committed to lowering their energy bills and improving their homes and health.
- Young people feeling heard and engaged in improving their space.



TOGETHER  
FOR MISSION  
ZERO Isle of Wight

ISLE OF WIGHT  
BIOSPHERE





# ISLE OF WIGHT **BIOSPHERE FESTIVAL** 2025

**28<sup>th</sup> June - 6<sup>th</sup> July**

**[www.iwbiosphere.org](http://www.iwbiosphere.org)**

Nature & community events across the whole  
island, celebrating our UNESCO Biosphere Reserve!

**ISLE OF WIGHT  
BIOSPHERE**



## Saturday 28th June

Festival of Conservation & Science (FOCAS)

Wildheart Animal Sanctuary, Yaverland, 09.30-17.00 **£2.50**

Summer Market

Calbourne Mill, Calbourne, 10.00-17.00 **FREE**

Family Arts Drop-in with Trudie Wilson

Quay Arts, Newport, 10.00 **FREE**

Plant Potting & Decorating

Freshwater Library, 10.00-12.00 **FREE**

Kidical Mass Cycle Ride

Cycle Wight, Ryde, 10.30 **FREE**

Write Back to Nature

Creation Matters, Yarmouth, 10.30-12.00 & 15.00-16.30 **FREE**

Make a Native Wildlife Mask

Ventnor Library, Ventnor, 10.30-11.30 **FREE**

Community Walk in Borthwood Copse

IOW Youth Trust, nr Sandown, 11.00 **FREE**

Moorgreen Allotments Open Day

Cowes, 13.00-16.00 **FREE**

Film Screening: My Garden of a Thousand Bees

Quay Arts Centre, Newport, 14.00 **FREE**

Make a Bird Feeder

Lord Louis Library, Newport, 14.30 **FREE**

Seaview Seagrass Wade & Survey Wade

Project Seagrass, Seaview, 18.00 **FREE**

Andy Roberts: Unplugged

Craft 101, East Cowes, 19.30-21.30 **FREE**

## Sunday 29th June

Festival of Conservation & Science (FOCAS)

Wildheart Animal Sanctuary, Yaverland, 09.30-17.00 **£2.50**

Biosphere Themed Kids Art Session

Quay Arts, Newport, 10.00 **FREE**

Food Forest Open Day

Permaculture Island, Niton, 10.00-16.00 **FREE**

Summer Market

Calbourne Mill, Calbourne, 10.00-17.00 **FREE**

Newtown History Walk

National Trust, Newtown, 10.30 **FREE**

Wight Sketchers Meet Up

Lucia Para, Freshwater Bay, 16.00 **FREE**

## Monday 30th June

Biosphere Festival Walk & Talk

Garlic Farm, Newchurch, 15.00 **FREE**

## Tuesday 1st July

Biosphere Street Party!

Monkton Arts, Ryde, 12.00-17.00 **FREE**

Rivers & Beavers Walk

Hampshire and IOW Wildlife Trust, Eastern Yar, 13.30 **FREE**

Quakers & the Environment

Isle of Wight Quakers, Newport, 13.30 **FREE**

A Witness to Change

St Olave's Church, Gatcombe, 13.30 **FREE**

The Mindful Gardener

Sylvia Clare, Newport, 14.30 **FREE**

## Wednesday 2nd July

Re-Bloom - Upcycling Planters

Network Ryde, Ryde, 16.00-18.00 **FREE**

The Restless Coast: A Journey Round the Edge of Britain

Medina Bookshop, Cowes, 19.00 **£5**

Swift Walk

Wight Swifts, Ryde, 19.30 **FREE**

## Thursday 3rd July

Meadow Magic

NatureZones, Blackwater, 14.00 **FREE**

Climate Fresk Workshop

Andrew Lee, Gurnard Pines, Gurnard 14.00 **FREE**

The Secrets of Trees

Wood Learn Forest School, Firestone Copse, 17.30 **£5**

Biosphere Short Films

Ventnor Arts Club, Ventnor, TIME TBC **£5/£8**

## Friday 4th July

Sunflowers & Garden Visit

Farringford Garden, Freshwater, 10.00-16.30 **FREE for primary school age +1 adult**

Discover Munsley Bog

Godshill Matters, Godshill, 17.00 **FREE**

Under the Tree

Island Storytellers, Cowes, 19.00 **£5**

The Figlet Launch & Biosphere Writing Awards

Naked Figleaf Press, Cowes, 19.00 **£5**

Six Inches of Soil Film Screening and Q&A

Gurnard Village Hall, Gurnard, 19.00 **FREE**

Marine Conservation Talk with Tapas

Esprit Freedivers, Seaview, 19.30 **£28pp**

## Saturday 5th July

Under the Pier Tours

Wightlink & University of Portsmouth, Ryde, TIME TBC

Biosphere Day

Wight Nature Fund, Yarmouth, 10.00-15.00 Stalls and Refreshments: 10.30 Scavenger Hunt: 13.30 Guided Walk **FREE**

Wellbeing Walk

National Trust, Newtown, 10.00 **FREE**

Historic "Old Quarr" Walk & Beach Clean

Fishbourne Parish Council, Fishbourne, 10.00 **FREE**

Lego Trees & Plants

Ryde Library, Ryde, 10.00-15.00 **FREE**

Underwater Freediving Safari

Esprit Freedivers, Seaview, 10.30 **£50pp**

Sketching Nature Day & Nature Trail

Brading Roman Villa, Brading, 10.30 and 13.30,

Workshop **£15**, Nature Trail **FREE**

Fabric Day

Gurnard Village Hall, Gurnard, 11.00 (booked workshops from 14.00) **FREE/TBC**

Translating Frequencies

Nathan Holt/Calbourne Church, Calbourne, 12.00-19.00 **FREE**

Bonchurch Open Gardens

Bonchurch Community Association, Bonchurch, 13.00-17.00 **£7.50 (under 12s FREE)**

Biosphere Drop-in (under 16s)

Independent Arts, Newport, 13.30-15.00 **FREE**

Morris Dance at the Biosphere Festival & Mardi Gras

New Carnival, Ryde, 14.30 (before procession) **FREE**

Mardi Gras: Our Folkstastic Isle

New Carnival, Ryde, 15.00 onwards **FREE**

## Sunday 6th July

Under the Pier Tours

Wightlink & University of Portsmouth, Ryde, TIME TBC

Together for Mission Zero Workshops

Grow Gurnard, Gurnard, 10.00-13.00 **FREE**

Earth & Sea Day

Gurnard Parish Council, Gurnard, from 10.00 **FREE**

Food Forest Open Day

Permaculture Island, Niton, 10.00-16.00 **FREE**

Binstead to Beach & Back

National Landscape, Binstead, 11.00, **FREE**

Community Walk in Borthwood Copse

IOW Youth Trust, near Sandown, 11.00 **FREE**

Bonchurch Open Gardens

Bonchurch Community Association, Bonchurch, 13.00-17.00 **£7.50 (under 12s FREE)**

Community Garden Picnic

Grow Gurnard, Gurnard, 13.00 **FREE**

Meadow Magic

NatureZones, Blackwater, 13.30 **FREE**

Quakers & the Environment

Isle of Wight Quakers, Newport, 14.00 **FREE**

The Mindful Gardener

Sylvia Clare, Newport, 15.00 **FREE**

## Multiple Days

Sheltered in a Phone Box

Re:Box Phone Box Gallery, Ryde, 24 hours **FREE**

Scavenger Hunt

Sandown Library, Sandown, during Library opening hours **FREE**

Grammar's Common Open Week

John Osborn, Brightstone, 09.00-16.00pm daily **FREE**

Rubbish Revolution Sculpture

Network Ryde, Ryde, 24 hours **FREE**

Sustainable & Circular Fashion

Maslen/Kori Collab, East Cowes, 2nd - 6th July, 10.00 - 16.00 daily **FREE**

The National Poo Museum

Department, Ryde, Weds 1st, Friday 4th, Saturday 5th, 10.00-16.30 **TBC**

Biosphere Festival Exhibition: An Island of 9 Principles

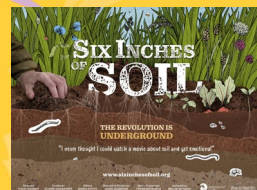
Monkton Arts, Ryde, Tues-Fri 10.30-16.00, Sat 11.00-19.00, Sun 11.00-15.00 **FREE**

Biosphere Tower

Applly Tower, Ryde, 10.30-16.00 daily (closed Thurs/Sat) **£150**

Some events may require booking.  
[www.iwbiosphere.org/biospherefestival](http://www.iwbiosphere.org/biospherefestival)  
for the latest event information.





## SAND AND DELIVER!

Come and join us to move sand, clean the beach, and get everything ready for the school holiday!

Tools will be provided, you just need your enthusiasm, however, you must register in order to take part.

**THURSDAY, 7TH JULY 2025**

09:30AM - 12:30PM

VARIOUS LOCATIONS TO INCLUDE:

EASTERN GARDENS SANDPARK, APPLY BEACH, AND RYDE MARINA

JOIN US!

BOOK HERE: [www.biospherefestival.org.uk](https://www.biospherefestival.org.uk)

CONTACT: [info@biospherefestival.org.uk](mailto:info@biospherefestival.org.uk)

