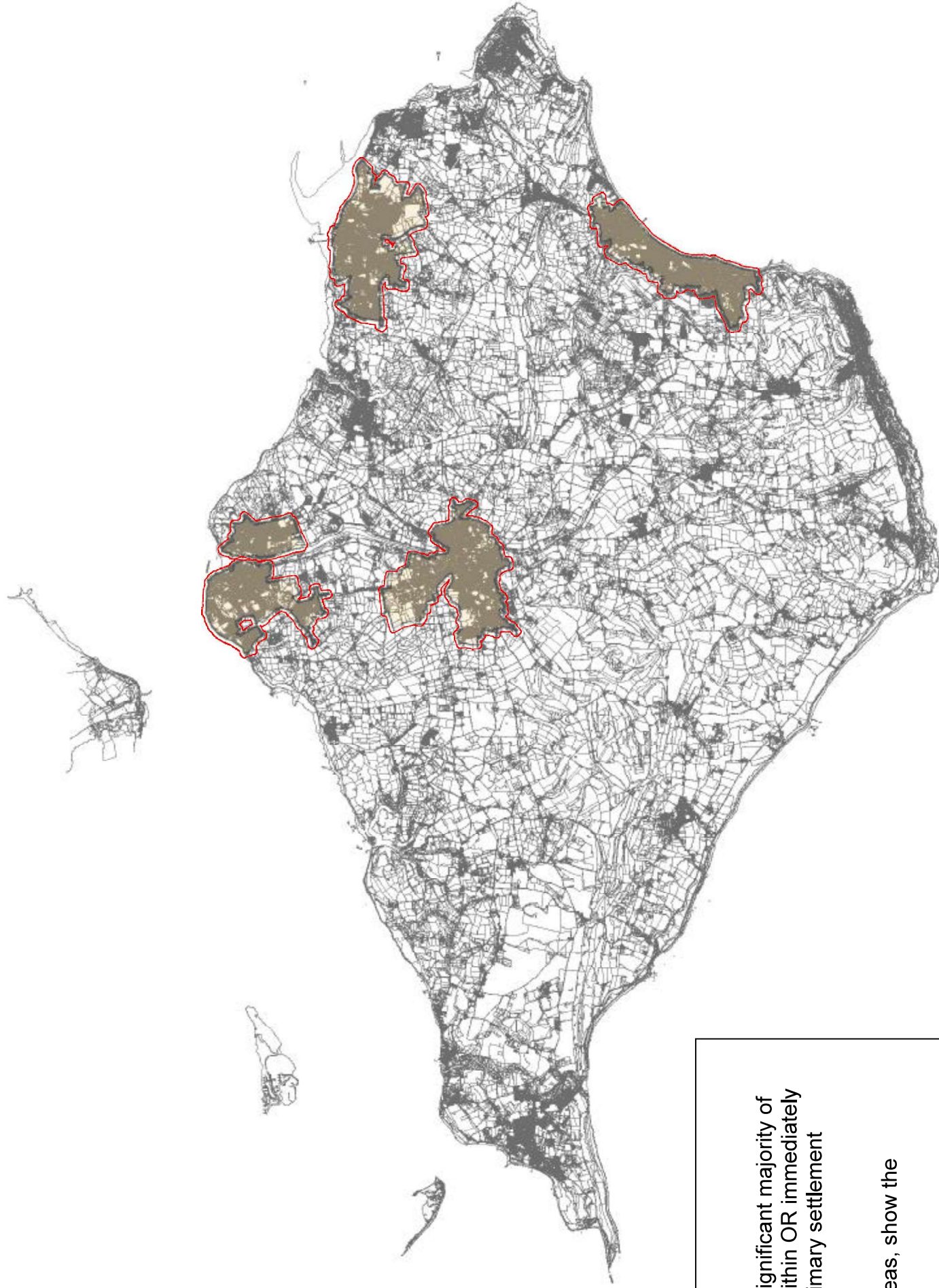


**Option C**

Areas shaded in blue represent potential growth areas in locations not previously considered



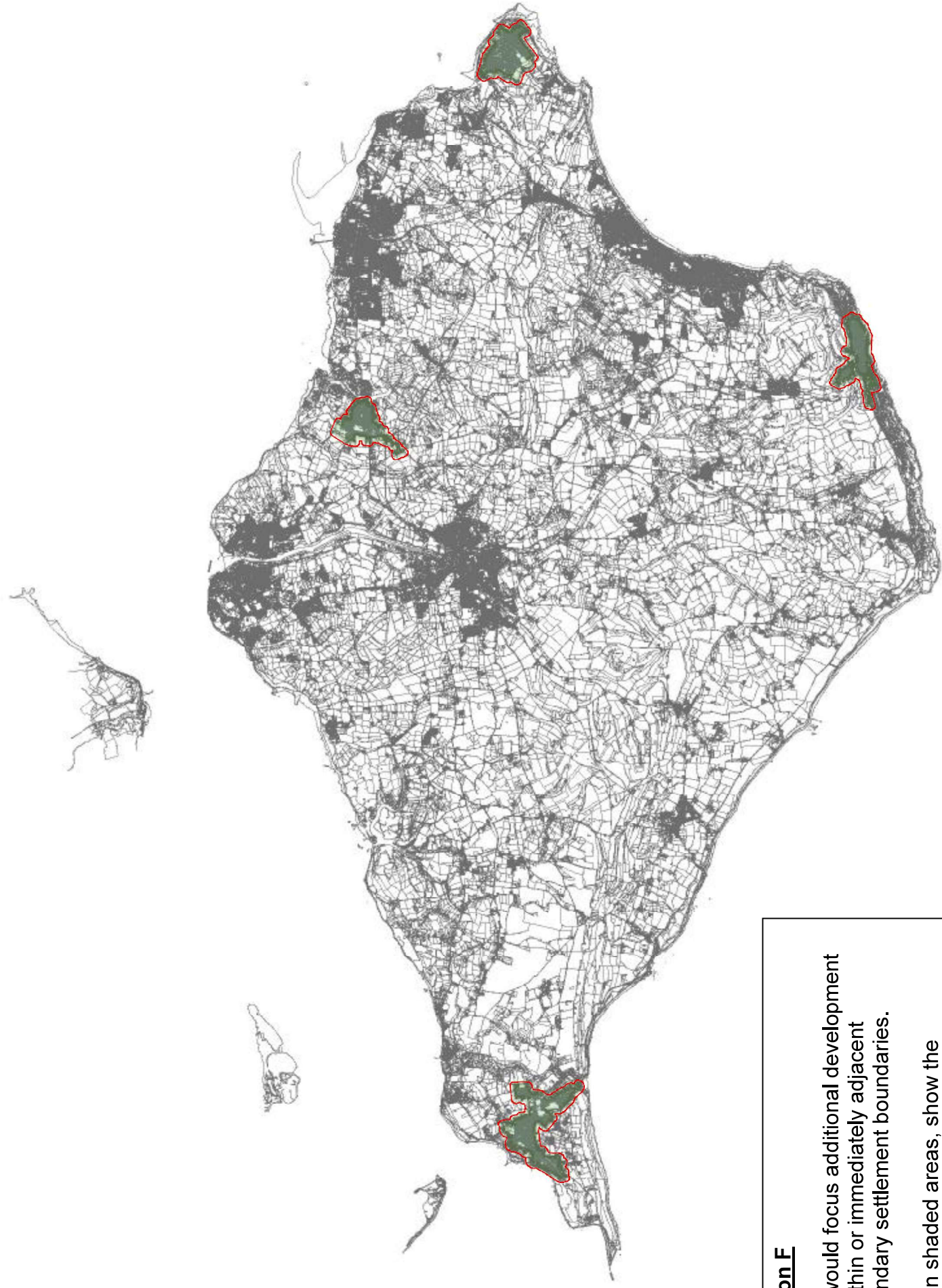


**Option E**

We would focus significant majority of development to within OR immediately adjacent to the primary settlement boundaries.

Yellow shaded areas, show the settlements.

Red outline represents a 100-meter buffer area.



**Option F**

We would focus additional development to within or immediately adjacent secondary settlement boundaries.

Green shaded areas, show the settlements.

Red outline represents a 100-meter buffer area.



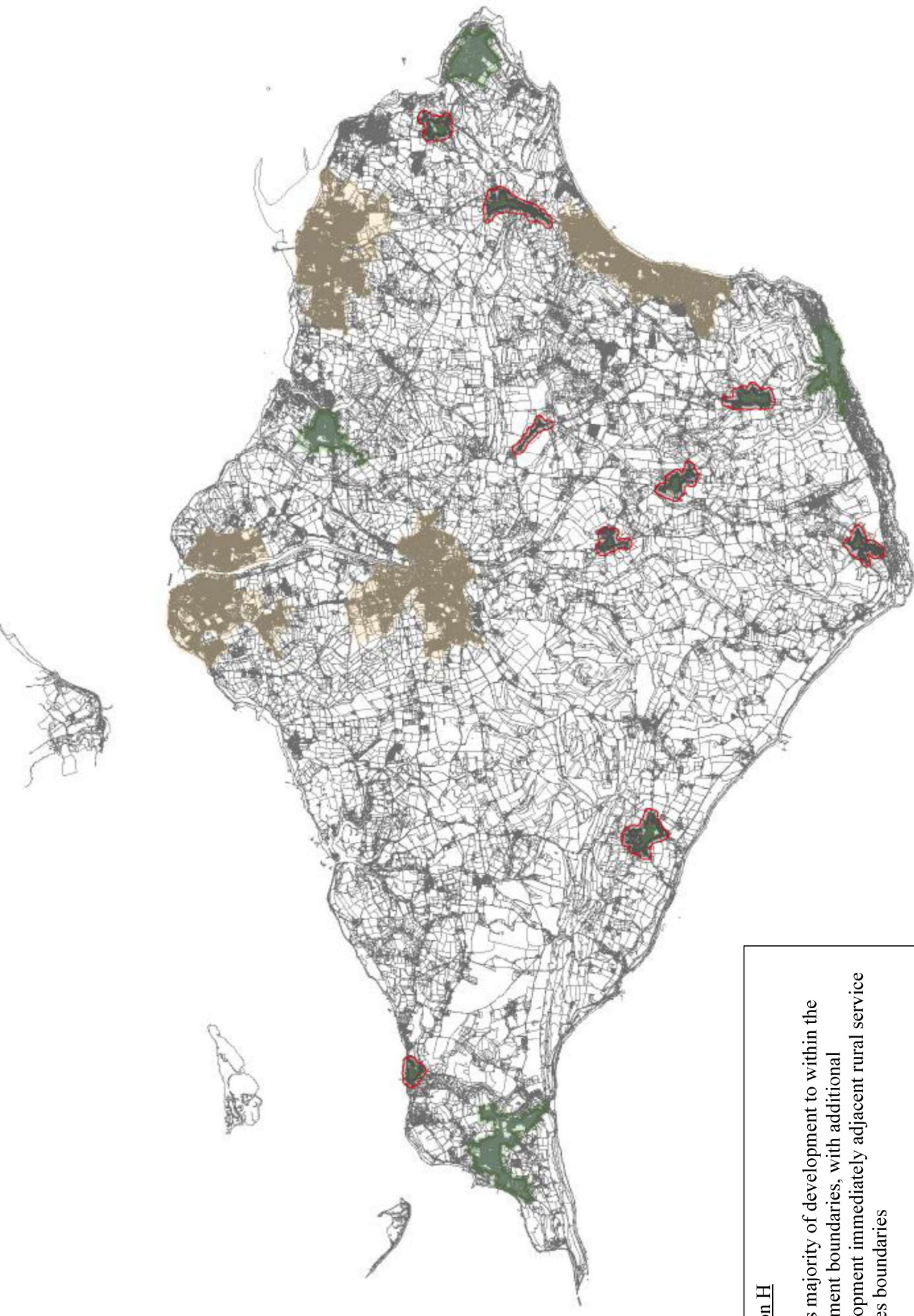


### **Option G**

We would focus additional development to within or immediately adjacent settlement boundaries of rural service centres.

Green shaded areas, show the settlements.

Red outline represents a 100-meter buffer area.



Option H

Focus majority of development to within the settlement boundaries, with additional development immediately adjacent rural service centres boundaries

Shaded areas represent the Settlement boundaries.

Red outline shows a 100-m buffer area.