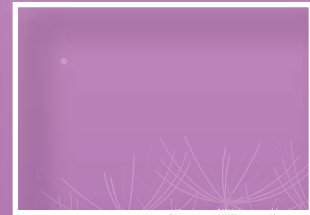


# learn&develop

ISLE OF WIGHT



## Isle of Wight Council Schools & Early Years Training Programme September 2016 - April 2017

*Relevant and High Quality  
Training, Resources, Information,  
Advice and Guidance for Schools  
and Governors*





Welcome to the Autumn Term 2016 Learning and Development Training Programme for Schools and Early Years staff.

You will find this brochure full of events and CPD programmes, focusing on knowledge, professional practice, policy and skills.

Our aim is to respond to the needs of the schools and early years workforce and therefore welcome your feedback, suggestions and comments on training you have attended and training you would like to see provided.

Many of you have purchased all or part of the schools and early years service level agreement. If you have not yet responded please do so to ensure that your school staff continue to get access to the Learning Resource Centre, Governor Services and the discounted rate for training events.

For those of you who haven't and would like further details of the benefits available to subscribers, please contact [learning.development@iow.gov.uk](mailto:learning.development@iow.gov.uk)

We would like to encourage greater use of our website where you will find the most up-to-date information on all our courses and events. You can find these details at: [www.iwight.com/trainingcourses](http://www.iwight.com/trainingcourses)

You can also receive updates and information via our facebook page, just visit [www.facebook.com/iwclearning](http://www.facebook.com/iwclearning) and like the page.

We very much look forward to working with you over the Autumn term and hope to see many of you at our events.

Best wishes,

**Isle of Wight Council  
Learning and Development Service**

## Contents

Information about the Service	p2
Early Years Foundation Stage	p5
Schools	p19
Special Educational Needs	p32
School Sports	p39
Safeguarding	p44
Health & Safety	p47
First Aid	p49
Core Learning	p51



## How to Apply:

---

If you would like to attend any course detailed in the Learning & Development Programme you can:

- Complete the [electronic application form](#) and email it to [learning.development@iow.gov.uk](mailto:learning.development@iow.gov.uk) (please ensure you have authorisation to attend from your line manager).
- Complete an application form and post to:  
Learning & Development,  
Community Learning Centre,  
Westridge, Brading Road,  
Ryde,  
IOW, PO33 1QS

Please book early as places are allocated on a first come first served basis.

## Course Fees

---

Where a course fee is applicable, an invoice will be sent half termly to the billing address given on the application form.

## Cancellation & Non-Attendance Policy

---

If you have to cancel your place, you will need to let us know in writing as soon as you can. Please email [learning.development@iow.gov.uk](mailto:learning.development@iow.gov.uk)

If you find you cannot come, but have a colleague who can take your place then there will be no charge.

If you cancel a place, without substituting, with less than ten working days' notice, or fail to attend the event, schools and other organisations will be charged the full cost of attendance.

**Early Years settings** will be charged a £50 administration fee for non-attendance at an event.

## Training Records

---

All individuals who have attended training on our programme may request a copy of their training history. Schools are able to request data on whole school training if required. All requests for training history and records should be sent to:

[learning.development@iow.gov.uk](mailto:learning.development@iow.gov.uk)

## Standards of Service

---

The Service holds the Matrix Quality Standard for the provision of Information, Advice and Guidance for learning and work. The standard recognises organisations who work within the following quality assurance standards:

- Effective forward planning, goal setting, progress measures and use of resources.
- Meeting clients' needs and ensuring consistency through the employment of competent and appropriately qualified staff, efficient and prompt administrative procedures and high standards of facilities and accommodation.
- Improving retention, achievement and progression rates on courses.
- Evaluating performance and identifying ways to continually improve and develop programmes through representative groups such as development governor forum, CPD leaders' meetings and observations of training programmes.

The Learning and Development Service is a registered City & Guilds Centre.



# Contacting the Learning & Development Service

for course information and general enquiries

tel: (01983) 817280

e-mail: [learning.development@iow.gov.uk](mailto:learning.development@iow.gov.uk)

for Learning Resource Centre enquiries

tel: (01983) 823346

e-mail: [helen.hiscock@iow.gov.uk](mailto:helen.hiscock@iow.gov.uk)

for Governor Support enquiries

tel: (01983) 817280

e-mail: [diane.hiscock@iow.gov.uk](mailto:diane.hiscock@iow.gov.uk)

Follow us on facebook:

[www.facebook.com/iowclearning](http://www.facebook.com/iowclearning)

## Find all our course details online



**Adult Community Learning**



**Schools & Learning**



**Early Years**



**Adult & Children's Social Care**



**Safeguarding**



**Core Programmes**

[www.iwight.com/trainingcourses](http://www.iwight.com/trainingcourses)



# Learning Resource Centre

Come and visit the Learning Resource Centre at Thompson House. It is light and airy making the resources easy to locate and Helen, the Librarian, is available to offer you advice and support. There is free parking at the front and rear of the building.

There is a study/planning area that can be booked for planning or serious study sessions! If you bring your own laptop you can connect to our free WiFi.

The Resource Centre is aimed at supporting School Leaders, NQTs, GTPs, SENCOs, Teachers, Teaching Assistants, Support Staff and School Governors. The Centre also supports Early Years Workers, Childminders, Youth Workers and Social Workers, as well as those just starting out on the road towards these careers. This invaluable service is only accessible to subscribing organisations.

## Our aim is to stay ahead of relevant reading lists and changing needs!

Our resources include materials on:

- Leadership
- Looked After Children
- Family Support
- Safeguarding
- GTP Study Materials
- Behaviour & Emotional Literacy
- Primary Curriculum Subjects
- School Governors
- Multicultural Resources
- Under Three's
- SEN & SENCO
- Healthy Schools
- Emotional Literacy
- Child Development & Childcare
- English as an Additional Language
- Youth Work

We also have a large range of puppets, story sacks, as well as, artefacts, CDs and DVDs to enhance your teaching.

## Our resources are constantly updated - drop in or see our newsletter for more details!

For schools and early years settings collections of themed/topic resources can be selected for teachers prior to collection.

### Resource Centre Opening times\*:

Monday	8:30am - 5:00pm
Tuesday	8:30am - 5:00pm
Wednesday:	8:30am - 5:00pm
Thursday:	8:30am - 6:00pm (term time only) 5:00pm closure in school holidays
Friday:	8:30am - 4:30pm

\*opening hours can be extended by arrangement.

**We are open throughout the school holidays!**

**Contact Helen to arrange a staff visit which will help make you aware of the vast array of exciting resources available to you.**



## Contact Us:

**Helen Hiscock,**  
Learning & Development Librarian

Learning & Development Resource Centre,  
Thompson House, Sandy Lane, Newport,  
Isle of Wight, PO30 3NA

Tel: (01983) 823346  
E-mail: [helen.hiscock@iow.gov.uk](mailto:helen.hiscock@iow.gov.uk)

**Search our resources online at:**  
[http://www.iwight.com/living\\_here/libraries](http://www.iwight.com/living_here/libraries)

# Early Years Foundation Stage

## Childminder Network Meeting

---

### TARGET GROUP:

Childminders

### COURSE AIMS:

- Explore a relevant range of topics and share good practice.
- Early Years Education funding.
- Information updates in the wider context to include PACEY Local Facilitator volunteer.

### INTENDED IMPACT:

Enhanced practice and pedagogy and access to a wider network.

<b>Trainer:</b>	Bernadette Scott, Finance Officer, Julie Sutch, Childcare Development and Business Officer, and Jane Thurbin and Tracey Rodd, Early Years Advisors.
<b>Dates:</b>	27 September 2016 AND
<b>Date:</b>	26 January 2017 AND
<b>Date:</b>	4 May 2017
<b>Time:</b>	6:30pm – 8:30pm
<b>Venue:</b>	Thompson House, Sandy Lane, Newport, Isle of Wight, PO30 3NA
<b>Cost:</b>	No additional charge for subscribing Early Years Settings.

## Early Years Briefings for Managers and Registered Providers

---

### TARGET GROUP:

Early Years Managers and Registered Providers.

<b>Date:</b>	29 September 2016
<b>Time:</b>	4:00pm – 6:00pm
<b>Venue:</b>	Thompson House, Sandy Lane, Newport, IOW, PO30 3NA AND
<b>Date:</b>	19 January 2017
<b>Time:</b>	4:00pm – 6:00pm
<b>Venue:</b>	Thompson House, Sandy Lane, Newport, IOW, PO30 3NA AND
<b>Date:</b>	9 May 2017
<b>Time:</b>	4:00pm – 6:00pm
<b>Venue:</b>	Thompson House, Sandy Lane, Newport, IOW, PO30 3NA
<b>Cost:</b>	No further charge, no need to book.

## Early Years Foundation Stage for Prospective Childminder Training

---

### TARGET GROUP:

Prospective Childminders.

### COURSE AIMS:

This course is an introduction to the Early Years Foundation Stage and comprises 3 parts:

#### Statutory Framework and pre-registration

Part 1 of the course will give an overview of the safeguarding and welfare requirements outlined within the Early Years Foundation Stage.

#### Learning and Development Requirements

Part 2 will provide delegates with a basic understanding of the Learning and Development requirements outlined within the Early Years Foundation Stage.

#### Setting up a 'Childminding Business'

Part 3 will look at the fundamental requirements and an overview of business management skills required to set up a business within your own home.

For full course aims, please visit:  
[www.iwight.com/trainingcourses](http://www.iwight.com/trainingcourses)

<b>Trainer:</b>	Members of the Early Years Advisory Team
<b>Dates:</b>	4 October 2016 11 October 2016 18 October 2016
<b>Time:</b>	5:00pm – 8:00pm
<b>Venue:</b>	Thompson House, Sandy Lane, Newport, IOW, PO30 3NA <i>Delegates must attend all dates</i> OR
<b>Date:</b>	2 February 2017 8 February 2017 16 February 2017
<b>Time:</b>	5:00pm – 8:00pm
<b>Venue:</b>	Thompson House, Sandy Lane, Newport, IOW, PO30 3NA <i>Delegates must attend all dates</i> OR
<b>Date:</b>	3 May 2017 11 May 2017 17 May 2017
<b>Time:</b>	5:00pm – 8:00pm
<b>Venue:</b>	Thompson House, Sandy Lane, Newport, IOW, PO30 3NA

## Early Years Surgeries

### TARGET GROUP:

Day-care managers and all early years practitioners.

### COURSE AIMS:

The Early Years surgeries will offer an opportunity to access professional support regarding all areas of EYFS as specified in the Improvement, Intervention and Support Programme (IISP):

- To explore identified priorities regarding practice and pedagogy.
- To ensure statutory requirements will be met and maintained.

### INTENDED IMPACT:

Positive outcomes for all children.

Please book an appointment on one of these days with Jane Thurbin or Tracey Rodd on 01983 821000 ext. 8417 (Jane Thurbin) or ext. 8416 (Tracey Rodd).

#### AUTUMN TERM

**Date:** 4 October 2016

**Time:** 9:00am – 12:00pm  
OR

**Date:** 5 October 2016

**Time:** 1:00pm – 4:00pm  
OR

**Date:** 6 October 2016

**Time:** 4:00pm – 6:00pm

**Venue:** Thompson House, Sandy Lane, Newport, IOW, PO30 3NA

#### SPRING TERM

**Date:** 7 February 2017

**Time:** 9:00am – 12:00pm  
OR

**Date:** 8 February 2017

**Time:** 1:00pm – 4:00pm  
OR

**Date:** 9 February 2017

**Time:** 4:00pm – 6:00pm

**Venue:** Thompson House, Sandy Lane, Newport, IOW, PO30 3NA

#### SUMMER TERM

**Date:** 16 May 2017

**Time:** 9:00am – 12:00pm  
OR

**Date:** 17 May 2017

**Time:** 1:00pm – 4:00pm  
OR

**Date:** 18 May 2017

**Time:** 4:00pm – 6:00pm

**Venue:** Thompson House, Sandy Lane, Newport, IOW, PO30 3NA

**Cost:** No further charge

## Early Years Network Meetings

### TARGET GROUP:

Early years practitioners, Reception year staff, childminders

### COURSE AIMS:

- To explore a relevant range of topics and share good practice.
- All Early Years and YR practitioners will share resources and ideas.
- Information updates.
- Opportunities to visit learning environments in school and settings.

### INTENDED IMPACT:

Enhanced practice and pedagogy and access to a wider network

**Trainer:** Members of the Early Years Team

**Date:** 8 November 2016

**Time:** 5:00pm - 7:00pm

AND/OR

**Date:** 10 November 2016

**Time:** 4:00pm - 6:00pm

AND/OR

**Date:** 28 February 2017

**Time:** 5:00pm - 7:00pm

AND/OR

**Date:** 2 March 2017

**Time:** 4:00pm - 6:00pm

AND/OR

**Date:** 13 June 2017

**Time:** 5:00pm - 7:00pm

AND/OR

**Date:** 15 June 2017

**Time:** 4:00pm - 6:00pm

**Venue:** TBC

**Cost:** There is no charge to attend these network sessions.



## Action Maths in EYFS

---

### TARGET GROUP:

All staff working in Nurseries, Pre-schools, Children's Centres and Crèches. Learning Assistants, NQTs, Reception Staff and Subject Leaders.

### COURSE AIMS:

This highly practical enjoyable course gives great insight into mathematics within EYFS 2012.

Participants will take part in creative and appropriate practical activities that are consistent with the principles and commitments of the new EYFS for developing children's number sense and concepts of shape, space and measure.

The course will look at developing a mathematically rich learning environment both indoors and outside. Participants will consider children's development of mathematical graphics, the role of the adult in promoting mathematics through sustained shared interactions. They will gain great ideas for making maths memorable while supporting calculation and problem solving.

### OBJECTIVES/LEARNING OUTCOMES

- Insight into all changes for mathematics within EYFS with the most up-to-date information.
- Embedding mathematics within the revised EYFS through highly appropriate practical activities that are consistent with the principles and commitments of the new EYFS, and developing children's number sense and concepts of shape, space and measure and looking at ways for developing progress.
- New ideas and inspiration for the creative teaching of mathematics.
- Identifying numeracy in everyday play, in routines, and in both the indoor and outdoor learning environments.
- Making mathematics memorable for young children.
- Meeting individual needs and learning styles, looking at observation strategies, and gaining tools for planning and assessment, and sustained shared interactions that enhance learning and progression.
- Understanding the adult role and looking at planning for child-initiated and adult led activities.
- Developing mathematical problem solving and early mathematical graphics in meaningful situations.

### INTENDED IMPACT:

- The changes for mathematics within EYFS 2012 and all up-to-date information.
- How to embed mathematics within the revised EYFS through inspirational fun active learning experiences using everyday resources.
- How mathematics fits with the principles and commitments and all areas of learning within EYFS.
- Identifying maths opportunities everywhere including everyday play and routines.
- Learning styles, the theory behind sustained shared interactions, and strategies for observation, assessment and planning.
- Observing and understand mathematical problem solving, calculation, developing number sense and developing children's graphics.
- The role of the enabling environment both indoors and outside.

<b>Trainer:</b>	<p>Margaret Travers</p> <p>Margaret Travers holds a Masters degree in early education and Certificate of Education as an adult trainer. She has twenty-seven years experience as a nursery owner and teacher, as an Ofsted inspector, and early year's teacher/trainer teaching at degree level. Margaret has also worked as a Head of Early Years in Primary settings and has written magazine articles and contributions for early learning reference books. Currently she writes and delivers a wide range of professional developmental courses for early years students and practitioners consistent with the EYFS framework and specialises in early science, maths and outdoor learning. She carries out extensive research on current developmental issues. Margaret is also a qualified Montessori teacher and has studied Reggio Emilio, Te Whariki from New Zealand, and Quality Outdoor Learning from Scandinavia.</p> <p>Margaret's workshops and courses ensure flexibility in order to meet individual needs and ensure groups find inspiration that is meaningful for them. Her hugely successful workshops and courses have been regularly delivered throughout the UK and internationally. Margaret is an accredited trainer, with passion. skills. She works in supporting early years settings to reach outstanding status.</p>
<b>Date:</b>	12 October 2016
<b>Time:</b>	9:30am – 3.30pm
<b>Venue:</b>	Thompson House, Sandy Lane, Newport, IOW, PO30 3NA
<b>Cost:</b>	<p>No additional cost for subscribing Early Years settings.</p> <p>Subscribing organisations will be charged £98 per place.</p> <p>Non subscribing organisations will be charged £122 per place.</p>

## Observation, Assessment and Planning (Early Years Foundation Stage)

---

### TARGET GROUP:

EYFS Staff and Teachers.

### COURSE AIMS:

This training looks at the cycle of observation, assessment and planning and how this circles around the unique child with their own interests, needs and stage of development.

You will look at a range of best practice examples, Ofsted expectation and statutory guidelines as well as top tip for implementation you're your own setting.

<b>Trainer:</b>	Rachel Evans, District Advisory Teacher, Services for Young Children. Hampshire County Council
<b>Date:</b>	20 October 2016
<b>Time:</b>	9:30am - 3:30pm
<b>Venue:</b>	Community Learning Centre, Westridge, Brading Road, Ryde, IOW, PO33 1QS
<b>Cost:</b>	No additional cost for subscribing Early Years settings. Subscribing organisations will be charged £89 per place. Non subscribing organisations will be charged £111 per place.

## The Integrated Review for Two Year Olds

---

### TARGET GROUP:

Early Years and Health Practitioners.

### COURSE AIMS:

The Integrated Review for two-year-olds has raised many questions for practitioners. This course gives an opportunity for practitioners to explore, reflect on and the content and possible organisation of reviews.

The integrated review is potentially a great opportunity to work more closely with families and ensure that each child's approaches to learning are supported.

The course aims to enable delegates to:

- Feel confident about the requirements of the Integrated Review.
- Reflect on current child development understanding.
- Recognise and be proactive about using the review as an opportunity to increase integrated working and closer relationships with parents.
- To create a plan for implementing changes to practice.

**Trainer:** Dr Kay Mathieson, Early Years Consultant & Trainer

Kay has worked in Early Years and primary settings since 1981. This has included supporting children with additional needs, especially behaviour, and their families. She led the Early Years Inclusion Team in a London Borough for 6 years, which involved supporting private, voluntary and independent sector settings to develop more inclusive practice. She has completed her PhD research into the development of social competence in young children at Sussex University. She worked part time with the National Strategies as an Early Years Regional Adviser until 2011 when she became a Director of Linden Learning, an ethical educational training and consultancy business. She has a particular interest in exploring what life is like in our early years settings for two year olds and the way in which children with additional needs and their families are included effectively. This has led to her most recent book that uses case studies to explore the SEND Code of Practice 2014.

**Date:** 21 October 2016

**Time:** 9:30am – 4:00pm

**Venue:** Community Learning Centre, Westridge, Brading Road, Ryde, IOW, PO33 1QS

**Cost:** No additional cost for subscribing Early Years settings

## Using TAPESTRY to Create Online Learning Journals

### MORNING SESSION - NEW USERS

To help/introduce new users and those interested in using Tapestry.

To get an understanding of how Tapestry works including:

- Using the APP and the website.
- Personalised settings.
- Taking observations.
- Adding media and assessments.
- Parental involvement
- Data tracking.

**Date:** 1 November 2016  
**Time:** 9:30am – 12:30pm  
**Venue:** Community Learning Centre, Westridge, Brading Road, Ryde, IOW, PO33 1QS

### AFTERNOON SESSION - EXPERIENCED USERS

To help those already using Tapestry to get the most out of it.

To get the most out of using Tapestry including:

- Next steps/obs.
- Snapshots.
- Analysis.
- Taking it into Key Stage One/Two.

**Date:** 1 November 2016  
**Time:** 1:00pm – 4:00pm  
**Venue:** Community Learning Centre, Westridge, Brading Road, Ryde, IOW, PO33 1QS

### EVENING SESSION - CHILDMINDERS

An overview of everything that Tapestry can do and an opportunity for a troubleshooting session.

**Date:** 1 November 2016  
**Time:** 6:00pm – 8:00pm  
**Venue:** Community Learning Centre, Westridge, Brading Road, Ryde, IOW, PO33 1QS

### RESOURCES REQUIRED:

Delegates that are already subscribing to Tapestry need to bring their laptops or tablets. Guest wifi will be available.

**Trainer:** Bev Eustace, Reception Class Teacher  
**Cost:** No additional cost for subscribing Early Years settings.  
 Subscribing organisations will be charged £60 per place.  
 Non subscribing organisations will be charged £75 per place.

## Using TAPESTRY – follow up sessions

### TARGET GROUP:

Early Years Practitioners and Reception Class Teachers already using TAPESTRY

### COURSE AIMS:

This is a follow-up session for schools/settings that are using Tapestry.

The course will cover:

- Getting the most out of Tapestry.
- Using the APP efficiently.
- Analysis – what can it tell you.
- Updates to Tapestry.

**Delegates need to return the questionnaire to get the most out of the session.**

**Trainer:** Bev Eustace, Reception Class Teacher, Broadlea Primary School

#### *Session for Managers*

**Date:** 16 March 2017  
**Time:** 9:30am – 12:30pm  
**Venue:** Thompson House, Sandy Lane, Newport, IOW, PO30 3NA

#### *Session for non-managers*

**Date:** 16 March 2017  
**Time:** 1:00pm – 4.00pm  
**Venue:** Thompson House, Sandy Lane, Newport, IOW, PO30 3NA

**Cost:** No additional cost for subscribing Early Years settings.  
 Subscribing organisations will be charged £60 per place.  
 Non subscribing organisations will be charged £75 per place.

## Forest School Experience Day: Exploring the Benefits of Risk

---

### TARGET GROUP:

Early years practitioners and reception class teachers and support staff.

### COURSE AIMS:

This course provides participants with an understanding of the ethos of Forest School and the benefits of experiential learning in the outdoors with an element of risk. The training will be outside and “hands on” so be prepared to get muddy and have some fun!

### OBJECTIVES/LEARNING OUTCOMES

Participants will:-

- Feel more confident about taking children outside to learn through play in natural environments.
- Feel better equipped to recognise and manage risk and support the children’s ability to be able to keep themselves safe.
- Gain a better understanding of the Forest School approach to learning and how children benefit holistically from child-centred learning in a natural environment.

### INTENDED IMPACT:

To provide practitioners with confidence in taking play and learning outside the classroom, using nature as a resource to enhance learning and be able to support children’s assessment and management of risk.

### RECOMMENDED READING MATERIALS:

- Forest School for All by Sara Knight
- No Fear: Growing up in a Risk Adverse Society by Tim Gill
- Playing Outdoors: Spaces and Places, Risk and Challenge by Helen Tovey

### RESOURCES REQUIRED:

All course participants will need to wear warm clothes, waterproof jacket and trousers, walking boots or wellies and bring a packed lunch. We recommend at least 3 layers of clothing for keeping warm during the cooler months, including a hat and warm socks. Even if the weather is warm you will need to wear long trousers, a long sleeved shirt and outdoor boots. Those sensitive to bites and stings might want to bring insect repellent.

**Trainer:** Kathy Grogan, Education Officer and Forest School Leader, Hampshire and Isle of Wight Wildlife Trust

Kathy Grogan trained to be a Forest School leader in 2006 with Bridgewater College. She is an Education Officer, Forest School practitioner and course tutor for Hampshire and Isle of Wight Wildlife Trust and delivers Forest School programmes and projects to a wide range of age and ability groups from toddlers to adults, including those with additional needs, from the Wildlife Trust’s Isle of Wight base at Bouldnor Forest.

**Date:** 12 November 2016

**Time:** 10:30am – 3:00pm

**Venue:** BOULDNOR FOREST CENTRE: The training will take place in Bouldnor Forest, Nr Yarmouth, Isle of Wight PO41 0AB; the grid reference is SZ 378 903. The entrance is a right turn off the main Shalfleet – Yarmouth Road 200 m west of Lockett’s campsite. Come up the forest track, closing the barrier behind you, and follow the signs to the parking area and meeting point

**Cost:** No additional cost for subscribing Early Years settings.

Subscribing organisations will be charged £51 per place.

Non subscribing organisations will be charged £64 per place.

## Outdoor learning (Early Years Foundation Stage)

### TARGET GROUP:

EYFS staff and Teachers

### COURSE AIMS:

This training looks at the importance and value of learning outdoors. It highlights its advantages and value outdoor learning has on specific groups of children. It takes you on a photographic journey of best practice with top tips and practical ideas of how to make these changes in your own setting

**Trainer:** Caroline Ardley, Advisory Teacher, Services for Young Children, Hampshire County Council

**Date:** 2 February 2017

**Time:** 9:30am – 3:30pm

**Venue:** Thompson House, Sandy Lane, Newport, IOW, PO30 3NA

**Cost:** No additional cost for subscribing Early Years settings.  
Subscribing organisations will be charged £89 per place.  
Non subscribing organisations will be charged £110 per place.

## Introduction to Bereavement for Pre Schools

### TARGET GROUP:

This course is suitable for practitioners who work with children of pre-school age.

### COURSE AIMS:

- Give participants an overview of the impact of loss and grief on children of pre-school age.
- Provide participants with an understanding of the challenges of sudden loss or death, and the effects of grief on a pre-school age child.
- Demonstrate how professionals can support and work directly with children of pre-school age impacted by loss and grief.

### INTENDED IMPACT:

- Recognise the impact of loss and grief on children at pre-school age.
- Have an awareness of the feelings and experiences of those bereaved by sudden death and bereavement
- Confidently support and feel better equipped to support children of pre-school age who have been bereaved

**Trainers:** Judi King, Samantha Guerrini, Teresa Brimble-Brennan, and Ad Vanheeswijk, Counsellors (YMCA)

*Please choose one of the dates below*

**Date:** 15 November 2016

**Time:** 3:30pm – 5:30pm

**Venue:** Thompson House, Sandy Lane, Newport, IOW, PO30 3NA

OR

**Date:** 27 February 2017

**Time:** 3:30pm – 5:30pm

**Venue:** Thompson House, Sandy Lane, Newport, IOW, PO30 3NA

**Cost:** No additional charge for subscribing Early Years Settings.

Subscribing organisation will be charged £94 per place.

Non subscribing organisations will be charged £118 per place.

## How We React Affects How Children Respond

---

### TARGET GROUP:

Practitioners working within the Early Years Foundation Stage.

### COURSE AIMS:

- To raise awareness of the impact adult behaviour and action has on children (reciprocity).
- To consider styles of managing/interacting with children.
- To understand the goals of behaviour in children.
- To develop strategies for positive behaviour management.

### INTENDED IMPACT:

- To improve understanding and awareness of the impact of adult behaviour on children.
- To develop/enhance strategies and techniques for positive and emotionally intelligent behaviour management in children.
- To improve awareness of the importance of the social and emotional aspects of learning.

**Trainer:** Penny Crossley, Consultant, The Crossley Company

**Please choose one of the dates below:**

**Date:** 22 November 2016

**Time:** 9:30am – 12:30pm

**Venue:** Community Learning Centre, Westridge, Brading Road, Ryde, IOW, PO33 1QS  
OR

**Date:** 30 March 2017

**Time:** 1:00pm – 4:00pm

**Venue:** Thompson House, Sandy Lane, Newport, IOW, PO30 3NA

**Cost:** No additional cost for subscribing Early Years settings.

Subscribing organisations will be charged £60 per place.

Non subscribing organisations will be charged £75 per place.

## How We React Affects How Children Respond (for Childminders)

---

### TARGET GROUP:

Childminders.

### COURSE AIMS:

- To raise awareness of the impact adult behaviour and action has on children (reciprocity).
- To consider styles of managing/interacting with children.
- To understand the goals of behaviour in children.
- To develop strategies for positive behaviour management.

### INTENDED IMPACT:

- To improve understanding and awareness of the impact of adult behaviour on children.
- To develop/enhance strategies and techniques for positive and emotionally intelligent behaviour management in children.
- To improve awareness of the importance of the social and emotional aspects of learning.

**Trainer:** Penny Crossley, Consultant, The Crossley Company

**Date:** 30 March 2017

**Time:** 6:00pm – 9:00pm

**Venue:** Thompson House, Sandy Lane, Newport, IOW, PO30 3NA

**Cost:** No additional cost for subscribing Early Years settings.



## Early Years Pupil Premium

### TARGET GROUP:

All Early Years practitioners working within the Early Years Foundation Stage.

### COURSE AIMS:

- Provide support with strategies for monitoring, assessing and raising attainment levels for children in the Early Years Foundation Stage (EYFS) and those attracting the Early Years Pupil Premium (EYPP).
- Explore what the Early Years Pupil Premium (EYPP) is and why it is being introduced.
- Identify eligible children and explore specific group attainment level trends.
- Consider methods of implementation, delivery, monitoring and assessment.
- Explore best practice examples and case studies.
- Measuring outcomes of the EYPP.

### INTENDED IMPACT:

NDNA hope that all training has a positive impact on raising quality within early years settings. To support this NDNA encourage training to be disseminated and evaluated. NDNA will contact settings following training to evaluate the impact made.

<b>Trainer:</b>	Deborah Robinson, Early Years Advisor, National Day Nurseries Association  Deborah has vast experience in the nursery sector, initially building her own nursery in 2001 then developing a small chain of six settings which were sold in 2012. A graduate in Business and Management and qualified in teaching in the lifelong learning sector, Deborah has developed business-related publications, courses and supported members with their own businesses. Deborah delivers training for NDNA as well as working with many Local Authorities and on Department for Education projects. Presently her role is Business Support Manager and specialist Early Years Adviser. She has been part of the NDNA team since 2012.
<b>Date:</b>	23 November 2016
<b>Time:</b>	9:30am – 12:30pm
<b>Venue:</b>	Community Learning Centre, Westridge, Brading Road, Ryde, IOW, PO33 1QS
<b>Cost:</b>	No additional costs for subscribing Early Years Settings.

## Measuring Impact

### TARGET GROUP:

Practitioners working within the Early Years Foundation Stage.

### COURSE AIMS:

- To build a greater understanding of the importance of measuring and monitoring impact in early years settings to improve outcomes for children.
- Explore different ways to collect evidence of impact
- Discuss the benefits of evaluative practice in your practice
- Identify the benefits of tracking and monitoring children's progress
- Explore ways to measure the impact of strategies such as EYPP.

### INTENDED IMPACT:

NDNA hope that all training has a positive impact on raising quality within early years settings. To support this NDNA encourage training to be disseminated and evaluated. NDNA will contact settings following training to evaluate the impact made.

<b>Trainer:</b>	Deborah Robinson, Early Years Advisor, National Day Nurseries Association
<b>Date:</b>	23 November 2016
<b>Time:</b>	1:30pm – 4:30pm
<b>Venue:</b>	Community Learning Centre, Westridge, Brading Road, Ryde, IOW, PO33 1QS
<b>Cost:</b>	No additional charge for subscribing Early Years Settings.

## 0-3 Years Network

---

### TARGET GROUP:

Practitioners working with children aged 0-3 years.

### COURSE AIMS:

- Explore a relevant range of topics and share good practice, resources and ideas.
- Early years practitioners will have the opportunity to network.
- There will be opportunity for professional discussion/reflection.

### INTENDED IMPACT:

Enhanced practice and pedagogy and access to a wider network.

<b>Trainer:</b>	Members of the Early Years Advisory Team and the Health Visiting Team
<b>Date:</b>	29 November 2016
<b>Time:</b>	6:30pm – 8:30pm
<b>Venue:</b>	Thompson House, Sandy Lane, Newport, IOW, PO30 3NA AND/OR
<b>Date:</b>	16 March 2017
<b>Time:</b>	6:30pm – 8:30pm
<b>Venue:</b>	Thompson House, Sandy Lane, Newport, IOW, PO30 3NA AND/OR
<b>Date:</b>	24 May 2017
<b>Time:</b>	6:30pm – 8:30pm
<b>Venue:</b>	Thompson House, Sandy Lane, Newport, IOW, PO30 3NA
<b>Cost:</b>	No additional charge for subscribing Early Years Settings.

## PSE Development (Early Years Foundation Stage)

---

### TARGET GROUP:

EYFS Staff and Teachers.

### COURSE AIMS:

This course will increase Early Years Teachers understanding of the following:

- Attachment and early brain development.
- Quality interactions and the role of the Key Person.
- Supporting children's emotional development.
- Children's problem solving skills.

<b>Trainer:</b>	Lizzie Scholfield, District Advisory Teacher, Services for Young Children, Hampshire County Council
<b>Date:</b>	29 November 2016
<b>Time:</b>	9:30am – 3:30pm
<b>Venue:</b>	Community Learning Centre, Westridge, Brading Road, Ryde, IOW, PO33 1QS
<b>Cost:</b>	No additional cost for subscribing Early Years settings. Subscribing organisations will be charged £89 per place. Non-subscribing organisations will be charged £111 per place.

## Understanding Behaviour, Observation of Behaviour, Managing Behaviour and Managing Childrens Challenging Behaviour

---

### TARGET GROUP:

All staff working with children and young people wishing to develop their knowledge and management of behaviour in children and young people. This includes: Teaching staff; support staff; behaviour support workers; MSAs and volunteers.

### COURSE AIMS:

- To provide a basic – intermediate level of understanding of behaviour and underpinning theories of behaviour.
- To consider goals of behaviour & the impact on children & young people ( their development and learning)
- To identify how to analyse behaviour in order to develop effective management strategies.
- To analyse the goals of behaviour and the impact on children & young people (and their development and learning)
- To provide an understanding of challenging behaviours
- To develop effective behaviour management strategies.
- To provide an understanding of challenging behaviours, including ADHD, ADD, ODD, CD
- To develop effective behaviour management strategies

### INTENDED IMPACT:

- To support practitioners in understanding of behaviour.
- To improve confidence in identifying cause and effect in behaviour, emotional and social difficulties.
- To support the professional development of practitioners in managing behaviour, emotional and social difficulties for children and young people.
- To support schools' staff in development of strategies to manage challenging behaviour.
- To improve confidence in managing challenging behaviours.
- To provide an opportunity for staff to share good practice and develop solution orientated and supportive practice.

### PLEASE BRING WITH YOU:

- School behaviour policy
- Home/school agreement
- School anti-bullying policy

<b>Trainer:</b>	Penny Crossley, Consultant, The Crossley Company
<b>Dates:</b>	24 January 2017 31 January 2017 7 February 2017 14 February 2017 <i>Delegates must attend all dates</i>
<b>Time:</b>	1:00pm – 4:00pm
<b>Venue:</b>	Thompson House, Sandy Lane, Newport, IOW, PO30 3NA
<b>Cost:</b>	No additional cost for subscribing Early Years settings. Subscribing organisations will be charged £60 per place. Non subscribing organisations will be charged £75 per place.

## Understanding Behaviour, Observation of Behaviour, Managing Behaviour and Managing Childrens Challenging Behaviour (for Childminders)

---

### TARGET GROUP:

Childminders.

### COURSE AIMS:

- To provide a basic – intermediate level of understanding of behaviour and underpinning theories of behaviour.
- To consider goals of behaviour & the impact on children & young people ( their development and learning)
- To identify how to analyse behaviour in order to develop effective management strategies.
- To analyse the goals of behaviour and the impact on children & young people (and their development and learning)
- To provide an understanding of challenging behaviours
- To develop effective behaviour management strategies.
- To provide an understanding of challenging behaviours, including ADHD, ADD, ODD, CD
- To develop effective behaviour management strategies

### INTENDED IMPACT:

- To support practitioners in understanding of behaviour.
- To improve confidence in identifying cause and effect in behaviour, emotional and social difficulties.
- To support the professional development of practitioners in managing behaviour, emotional and social difficulties for children and young people.
- To support schools' staff in development of strategies to manage challenging behaviour.
- To improve confidence in managing challenging behaviours.
- To provide an opportunity for staff to share good practice and develop solution orientated and supportive practice.

<b>Trainer:</b>	Penny Crossley, Consultant, The Crossley Company
<b>Dates:</b>	24 January 2017 31 January 2017 7 February 2017 14 February 2017 <b><i>Delegates must attend all dates</i></b>
<b>Time:</b>	6:00pm – 9:00pm
<b>Venue:</b>	Thompson House, Sandy Lane, Newport, IOW, PO30 3NA
<b>Cost:</b>	No additional cost for subscribing Early Years settings.

## Transitions and School Readiness (Early Years Foundation Stage)

### TARGET GROUP:

EYFS staff and Teachers

### COURSE AIMS:

This training will identify the issues that impact upon children's ability to deal with transitions. It examines influential early situations and experiences focusing both on children's needs and experiences, and on the role of the adult. It will look at the different types of transition that children experience, principles of effective transition, key features of effective practice in transition, keeping the child at the centre, communication and relationship building, moving on.

The transition cycle, the main needs of children, parents and settings at 'rites of passage' transition, practical ideas to smooth 'rites of passage' transitions and an in-depth look at school readiness and what this means in practice. A range of self-evaluation materials are included with the training which have been designed to support you to identify the strategies you currently employ to ease transitions for children and to identify strategies you could begin to implement or develop further.

<b>Trainer:</b>	Sarah Williams and Michelle Comporte, Advisory Teachers, SfYC
<b>Date:</b>	16 March 2017
<b>Time:</b>	9:30am – 4:00pm
<b>Venue:</b>	Community Learning Centre, Westridge, Brading Road, Ryde, IOW, PO33 1QS
<b>Cost:</b>	No additional cost for subscribing Early Years settings. Subscribing organisations will be charged £89 per place. Non subscribing organisations will be charged £111 per place.

## Running Language Enrichment Groups (LEG groups)

### TARGET GROUP:

All Early Years practitioners working within the Early Years Foundation Stage.

### COURSE AIMS:

This course is for any early years practitioner to learn how to run and develop LEG groups in your setting. It will also refresh your skills if you already run the groups. A good opportunity to collect the new and improved resource manual and network with other practitioners to get fresh ideas.

The course will enable participants to:

- Learn/refresh the principles of the LEG groups.
- Learn how to run the groups and develop it further for your setting
- Share ideas and good practice with other practitioners

### INTENDED IMPACT:

To reflect on current practice and update skills for running the groups.

<b>Trainer:</b>	Speech and Language Therapy Team Early Years Advisory Team
<b>Date:</b>	4 May 2017
<b>Time:</b>	1:00pm – 4:00pm
<b>Venue:</b>	Thompson House, Sandy Lane, Newport, IOW, PO30 3NA
<b>Cost:</b>	No additional cost for subscribing Early Years settings. Subscribing organisations will be charged £44 per place. Non subscribing organisations will be charged £55 per place.





# Schools

## Lunchtime Supervisors Playground Activities Workshop (Part 1)

### TARGET GROUP:

Lunchtime Supervisors, Teaching Assistant's and other staff members involved in Playground duties

### COURSE AIMS:

This NEW workshop is designed to equip Lunchtime supervisors and other staff with the skills and knowledge to increase physical activity levels through purposeful and fun activities at break and lunchtimes (using the School playground)

Upon completion of this two part workshop participants will be able to:

- Use a range of games and activities specifically designed for playground use.
- Provide safe organisation of playground activities.
- Safely support playground leaders in the management and leadership of playground activities.
- Deal with difficult situations.
- Find positive solutions to issues.
- Strategies for gaining respect and confidence through positive play.

A variety of activity and resource ideas will be provided.

### INTENDED IMPACT:

To enable Lunchtime/Break time staff to provide a variety of fun games and activities that will increase the physical activity level of pupils.

### RESOURCES REQUIRED:

Appropriate clothing and footwear for Playground activities

<b>Trainer:</b>	Tony Harris and Andy Day
<b>Date:</b>	29 September 2016
<b>Time:</b>	2:00pm – 3:30pm
<b>Venue:</b>	Barton Primary School, Furrongs, Newport, IOW, PO30 2AX
<b>Cost:</b>	Subscribing organisations will be charged £64 per place. Non-subscribing organisations will be charged £80 per place.

## Lunchtime Supervisors Field Activities Workshop (Part 2)

### TARGET GROUP:

Lunchtime Supervisors, Teaching Assistant's or other staff members involved in Playground duties.

### COURSE AIMS:

This NEW workshop is designed to equip Lunchtime Supervisors and other staff with the skills and knowledge to increase physical activity levels through purposeful and fun activities at break and lunchtimes (using the school field).

Upon completion of this two part workshop candidates will be able to:

- Use a range of games and activities specifically designed for field use.
- Provide safe organisation of field activities.
- Safely support lunchtime leaders in the management and leadership of field activities.

A variety of activities and resource ideas will be provided.

### INTENDED IMPACT:

To enable Lunchtime/Break time staff to provide a variety of fun games and activities that will increase the physical activity levels of pupils.

<b>Trainer:</b>	Andy Day and Tony Harris
<b>Date:</b>	30 March 2017
<b>Time:</b>	2:00pm – 3:30pm
<b>Venue:</b>	Barton Primary School, Furrongs, Newport, IOW, PO30 2AX
<b>Cost:</b>	Subscribing organisations will be charged £64 per place. Non-subscribing organisations will be charged £80 per place.

## Developing Nurture Groups

### TARGET GROUP:

Primary and Secondary Headteachers and SENCOs who are interested in setting up a Nurture Group. Experienced Nurture Group staff who are willing to share their knowledge and practice.

### COURSE AIMS:

This afternoon workshop is designed to help delegates have a clear understanding about why Nurture Groups are successful, which children they will benefit, and how to set up and run a Nurture group. Areas covered will include:

- Background & Theory of nurture groups.
- How to set up a nurture group.
- Effectiveness of nurture groups.
- Sharing examples of good practice from existing nurture group practitioners who attend.
- Support from Hampshire & Isle of Wight Educational Psychology.

As a result of attendance delegates will have a clear understanding about why Nurture Groups are successful, which children they will benefit, and how to set up and run a Nurture group.

### INTENDED IMPACT:

Using the Boxall Profile delegates will be able to identify pupils who will benefit from Nurture group support. These children will attend their mainstream class alongside Nurture Group provision, and this will lead to measurable gains in their ability to access learning through improved attendance, co-operation, emotional security, self-esteem and speech and language skills

<b>Trainer:</b>	Sue Sheppard and Anne Hart Sue has been running the Nurture Group Project in Hampshire for 12 years. She has a particular interest in nurture groups and attachment, and has been influential in promoting their development in secondary schools. Anne has been involved in supporting the project alongside Sue, and has a particular interest in the early years, as well as promoting positive relationships between staff and pupils.
<b>Date:</b>	27 September 2016
<b>Time:</b>	1:30pm – 3:30pm
<b>Venue:</b>	Thompson House, Sandy Lane, Newport, PO30 3NA
<b>Cost:</b>	Subscribing organisations will be charged £27 per place. Non-subscribing organisations will be charged £33 per place.

## A Human Rights Based Approach (HRBA) to Improve Health, Wellbeing & Achievement - Session 1: Introduction 'Seeing the Potential'

### TARGET GROUP:

Each Primary or Secondary school should aim to nominate two delegates; 1 member of Senior Leadership Team and one other member of staff. Please note that this course is designed for delegates who *did not* attend the Health & Wellbeing event in April 2016. More details on attendance can be found below.

### COURSE AIMS:

Using a HRBA to education can be shown to have a particularly positive effect on children and young people. But how exactly can we put this into practice? This half day course will enable delegates to:

- Gain / extend an understanding of a human rights based approach to improving wellbeing and achievement.
- Learn how this holistic, values framework can be applied and evaluated in school settings.
- Understand better the potential for a human rights based approach to set the values which enhance wellbeing, learning and achievement.
- Become familiar with some relevant evaluations and evidence.

### INTENDED IMPACT:

- Learned through participatory and challenging workshop activities which model a Human Rights based approach
- Acquired an improved working knowledge of the principles of a human rights based approach (HRBA) to raising standards of wellbeing,
- Examined the way this approach empowers young people and their families to make, and want to make, informed choices affecting their own and other's wellbeing

As a result participants will be motivated to advocate for implementing a HRBA to wellbeing in their schools and attend further sessions of the HRBA to Wellbeing Course.

<b>Trainer:</b>	Edward Waller, Previously Head of UNICEF UK Education Team 2006-2010 Edward Led development of UNICEF's Rights Respecting School Award.
<b>Date:</b>	4 October 2016
<b>Time:</b>	9:30am – 12:15pm
<b>Venue:</b>	Community Learning Centre, Westridge, Brading Road, Ryde, IOW, PO33 1QS OR
<b>Date:</b>	8 November 2016
<b>Time:</b>	1:15pm – 4:00pm
<b>Venue:</b>	Community Learning Centre, Westridge, Brading Road, Ryde, IOW, PO33 1QS
<b>Cost:</b>	Subscribing organisations will be charged £55 per place. Non-subscribing organisations will be charged £69 per place.

## A Human Rights Based Approach (HRBA) to Improve Health, Wellbeing & Achievement Session 2 – Beginning the Implementation & Bringing Whole School Values to the Fore

---

### TARGET GROUP:

Each Primary or Secondary school should aim to nominate two delegates; one member of Senior Leadership Team and one other member of staff. Please note that this course is designed for delegates who attended the HRBA workshop at the Health & Wellbeing event in April 2016. More details on attendance can be found below.

### COURSE AIMS:

This half day course is designed to continue the work started during the HRBA workshop earlier in the year. Over the course of the training the following areas will be covered:

- Explain the UN's core Human Rights principles and demonstrate how the DoE's Fundamental British Values sit within these
- Examine some wellbeing and achievement impact criteria for evaluating HRBA in different school situations
- Show how an HRBA fits into good management practice – examine tools and approaches for surveying what schools already do and what subjective wellbeing is like for staff and students

### INTENDED IMPACT:

Participants will have developed an understanding of what the next steps should be in implementing the HRBA in their own school setting. This understanding will reflect growing confidence in:

- Explaining what a human rights based approach means in ways that are relevant to staff, students and parents.
- Engaging volunteers from senior staff, staff and students (and at some stage parents) to help lead and coordinate an evolving HRBA action plan.

Participants will seek to secure commitment from their schools to further professional development related to taking forward the HRBA in their school community. Participants will be offered the option of a series of implementation workshops as a follow up

As a result of attendance participants will commit to:

- Engaging staff and students support for next steps of implementation (including awareness raising) and extending participation
- Reviewing the subjective wellbeing of staff and students
- Identifying priorities for action planning based on the review

<b>Trainer:</b>	Edward Waller, Previously Head of UNICEF UK Education Team 2006-2010 Edward Led development of UNICEF's Rights Respecting School Award. Currently he is Co-founder and Director of Realising Rights UK. His works enables him to work with organisations to help develop and implement Human Rights based approaches and demonstrate positive impact on practice.
<b>Date:</b>	4 October 2016
<b>Time:</b>	1:15pm – 4:00pm
<b>Venue:</b>	Community Learning Centre, Westridge, Brading Road, Ryde, IOW, PO33 1QS OR
<b>Date:</b>	8 November 2016
<b>Time:</b>	9:30pm – 12:15pm
<b>Venue:</b>	Community Learning Centre, Westridge, Brading Road, Ryde, IOW, PO33 1QS
<b>Cost:</b>	Subscribing organisations will be charged £55 per place. Non-subscribing organisations will be charged £69 per place.

## Action Maths in EYFS

---

### TARGET GROUP:

All staff working in Nurseries, Pre-schools, Children's Centres and Crèches. Learning Assistants, NQTs, Reception Staff and Subject Leaders.

### COURSE AIMS:

This highly practical enjoyable course gives great insight into mathematics within EYFS 2012.

Participants will take part in creative and appropriate practical activities that are consistent with the principles and commitments of the new EYFS for developing children's number sense and concepts of shape, space and measure.

The course will look at developing a mathematically rich learning environment both indoors and outside. Participants will consider children's development of mathematical graphics, the role of the adult in promoting mathematics through sustained shared interactions. They will gain great ideas for making maths memorable while supporting calculation and problem solving.

### OBJECTIVES/LEARNING OUTCOMES

- Insight into all changes for mathematics within EYFS with the most up-to-date information.
- Embedding mathematics within the revised EYFS through highly appropriate practical activities that are consistent with the principles and commitments of the new EYFS, and developing children's number sense and concepts of shape, space and measure and looking at ways for developing progress.
- New ideas and inspiration for the creative teaching of mathematics.
- Identifying numeracy in everyday play, in routines, and in both the indoor and outdoor learning environments.
- Making mathematics memorable for young children.
- Meeting individual needs and learning styles, looking at observation strategies, and gaining tools for planning and assessment, and sustained shared interactions that enhance learning and progression.
- Understanding the adult role and looking at planning for child-initiated and adult led activities.
- Developing mathematical problem solving and early mathematical graphics in meaningful situations.

### INTENDED IMPACT:

- The changes for mathematics within EYFS 2012 and all up-to-date information.
- How to embed mathematics within the revised EYFS through inspirational fun active learning experiences using everyday resources.
- How mathematics fits with the principles and commitments and all areas of learning within EYFS.
- Identifying maths opportunities everywhere including everyday play and routines.
- Learning styles, the theory behind sustained shared interactions, and strategies for observation, assessment and planning.
- Observing and understand mathematical problem solving, calculation, developing number sense and developing children's graphics.
- The role of the enabling environment both indoors and outside.

### Trainer:

Margaret Travers

Margaret Travers holds a Masters degree in early education and Certificate of Education as an adult trainer. She has twenty-seven years experience as a nursery owner and teacher, as an Ofsted inspector, and early year's teacher/trainer teaching at degree level. Margaret has also worked as a Head of Early Years in Primary settings and has written magazine articles and contributions for early learning reference books. Currently she writes and delivers a wide range of professional developmental courses for early years students and practitioners consistent with the EYFS framework and specialises in early science, maths and outdoor learning. She carries out extensive research on current developmental issues. Margaret is also a qualified Montessori teacher and has studied Reggio Emilia, Te Whariki from New Zealand, and Quality Outdoor Learning from Scandinavia.

Margaret's workshops and courses ensure flexibility in order to meet individual needs and ensure groups find inspiration that is meaningful for them. Her hugely successful workshops and courses have been regularly delivered throughout the UK and internationally. Margaret is an accredited trainer, with passion. skills. She works in supporting early years settings to reach outstanding status.

**Date:** 12 October 2016

**Time:** 9:30am – 3.30pm

**Venue:** Thompson House, Sandy Lane, Newport, IOW, PO30 3NA

**Cost:** Fully funded for subscribing Early Years. Subscribing organisations will be charged £123 per place. Non subscribing organisations will be charged £153 per place.

## Emotion Coaching Children and Young People

---

### TARGET GROUP:

Any staff working with children and young people wishing to develop their understanding of behaviour in children and young people. This includes: teaching staff; support staff; behaviour support workers; MSAs; volunteers.

### COURSE AIMS:

- To provide basic understanding of brain development in children & young people and how this affects emotional regulation and behaviour.
- To provide an understanding of the emotion coaching model (Dr John Gottman).
- To develop the skills required to coach children & young people on emotions.
- To develop the strategies to effectively emotion coach children & young people.

### INTENDED IMPACT:

- To support practitioners working with children and young people in understanding brain development and the effect on emotions
- To improve confidence in practising the skills to effectively manage and coach emotional behaviours
- To support the professional development of practitioners in recognising and effectively managing emotional behaviours in children and young people.
- To provide an opportunity for staff to share good practice and develop solution orientated and supportive practice.

**Trainer:** Penny Crossley, Training & Managing Director, The Crossley Company (IOW) Ltd

**Please choose one of the dates below:**

**Date:** 17 October 2016

**Time:** 9:30am - 4:30pm

**Venue:** Community Learning Centre, Westridge, Brading Road, Ryde, IOW, PO33 1QS  
OR

**Date:** 30 January 2017

**Time:** 9:30am - 4:30pm

**Venue:** Thompson House, Sandy Lane, Newport, IOW, PO30 3NA  
OR

**Date:** 11 May 2017

**Time:** 9:30am - 4:30pm

**Venue:** Community Learning Centre, Westridge, Brading Road, Ryde, IOW, PO33 1QS

**Cost:** Subscribing organisations will be charged £90 per place.

Non-subscribing organisations will be charged £112 per place.

## Observation, Assessment and Planning (Early Years Foundation Stage)

---

### TARGET GROUP:

EYFS Staff and Teachers.

### COURSE AIMS:

This training looks at the cycle of observation, assessment and planning and how this circles around the unique child with their own interests, needs and stage of development.

You will look at a range of best practice examples, Ofsted expectation and statutory guidelines as well as top tip for implementation you're your own setting.

**Trainer:** Rachel Evans, District Advisory Teacher, Services for Young Children. Hampshire County Council

**Date:** 20 October 2016

**Time:** 9:30am - 3:30pm

**Venue:** Community Learning Centre, Westridge, Brading Road, Ryde, IOW, PO33 1QS  
No additional cost for subscribing Early Years settings.

**Cost:** Subscribing organisations will be charged £89 per place.

Non-subscribing organisations will be charged £111 per place.

## EYFS for LSAs New or Returning to Year R

---

### TARGET GROUP:

Learning Support Assistants new to or returning to Year R.

### COURSE AIMS:

To develop clarity of role and confidence of practitioners who work with children in the EYFS.

### OBJECTIVES/LEARNING OUTCOMES:

A basic introduction to key aspects of the EYFS, including enabling environments, the role of the adult and understanding and supporting the unique child.

### INTENDED IMPACT:

Staff will be able to better meet the needs of children within the EYFS.

<b>Trainer:</b>	Rachel Evans, District Advisory Teacher
<b>Date:</b>	1 November 2016
<b>Time:</b>	9:30am – 4:30pm
<b>Venue:</b>	Thompson House, Sandy Lane, Newport, IOW, PO30 3NA
<b>Cost:</b>	Subscribing organisations will be charged £89 per place. Non-subscribing organisations will be charged £111 per place.

## Using TAPESTRY to Create Online Learning Journals

---

### MORNING SESSION - NEW USERS

To help/introduce new users and those interested in using Tapestry.

To get an understanding of how Tapestry works including:

- Using the APP and the website.
- Personalised settings.
- Taking observations.
- Adding media and assessments.
- Parental involvement
- Data tracking.

<b>Date:</b>	1 November 2016
<b>Time:</b>	9:30am – 12:30pm
<b>Venue:</b>	Community Learning Centre, Westridge, Brading Road, Ryde, IOW, PO33 1QS

### AFTERNOON SESSION - EXPERIENCED USERS

To help those already using Tapestry to get the most out of it.

To get the most out of using Tapestry including:

- Next steps/obs.
- Snapshots.
- Analysis.
- Taking it into Key Stage One/Two.

<b>Date:</b>	1 November 2016
<b>Time:</b>	1:30pm – 4:30pm
<b>Venue:</b>	Community Learning Centre, Westridge, Brading Road, Ryde, IOW, PO33 1QS

### RESOURCES REQUIRED:

Delegates that are already subscribing to Tapestry need to bring their laptops or tablets. Guest wifi will be available.

<b>Trainer:</b>	Bev Eustace, Reception Class Teacher
<b>Cost:</b>	No additional cost for subscribing Early Years settings. Subscribing organisations will be charged £60 per place. Non subscribing organisations will be charged £75 per place.



## Using TAPESTRY – follow up sessions

---

### TARGET GROUP:

Early Years Practitioners and Reception Class Teachers already using TAPESTRY

### COURSE AIMS:

This is a follow-up session for schools/settings that are using Tapestry.

The course will cover:

- Getting the most out of Tapestry.
- Using the APP efficiently.
- Analysis – what can it tell you.
- Updates to Tapestry.

**Delegates need to return the questionnaire to get the most out of the session.**

<b>Trainer:</b>	Bev Eustace, Reception Class Teacher, Broadlea Primary School <b>Session for Managers</b>
<b>Date:</b>	16 March 2017
<b>Time:</b>	9:30am – 12:30pm
<b>Venue:</b>	Thompson House, Sandy Lane, Newport, IOW, PO30 3NA <b>Session for non-managers</b>
<b>Date:</b>	16 March 2017
<b>Time:</b>	1:00pm – 4.00pm
<b>Venue:</b>	Thompson House, Sandy Lane, Newport, IOW, PO30 3NA
<b>Cost:</b>	No additional cost for subscribing Early Years settings. Subscribing organisations will be charged £60 per place. Non subscribing organisations will be charged £75 per place.

## Initial ELSA Training

---

### TARGET GROUP:

Teaching Assistants, who can be supported by school leaders to carry out the role of ELSA. This is not suitable for Early Years practitioners.

### COURSE AIMS:

This six day practical programme aims to develop the understanding and skills of teaching assistants so they can become ELSA's. The support of school leaders is essential to the ELSA role.

As a potential ELSA you will learn about directly supporting the social inclusion of vulnerable children through:

- Raising emotional awareness.
- Self-esteem.
- Active listening.
- Anger management.
- Social Skills.
- Autism and social stories.
- Friendship skills.
- Therapeutic Stories.
- Loss and bereavement.
- Family break-up.

Overall ELSA's support the social inclusion of vulnerable children. ELSA's work with individuals and small groups of children/young people to help them learn to understand their emotions and respect the feelings of those around them. They provide the time and space for pupils to think about their personal circumstances and how to manage them.

<b>Trainer:</b>	Tara Diebel and Alex Wood, Educational Psychologists
<b>Date:</b>	2 November 2016
<b>Venue:</b>	Thompson House, Sandy Lane, Newport, IOW, PO30 3NA AND
<b>Date:</b>	30 November 2016
<b>Venue:</b>	Thompson House, Sandy Lane, Newport, IOW, PO30 3NA AND
<b>Date:</b>	10 January 2017
<b>Venue:</b>	Thompson House, Sandy Lane, Newport, IOW, PO30 3NA AND
<b>Date:</b>	1 February 2017
<b>Venue:</b>	Thompson House, Sandy Lane, Newport, IOW, PO30 3NA AND
<b>Date:</b>	1 March 2017
<b>Venue:</b>	Thompson House, Sandy Lane, Newport, IOW, PO30 3NA
<b>Date:</b>	Day 6 date and venue TBC
<b>Time:</b>	9:00am – 3:30pm
<b>Cost:</b>	Subscribing organisations will be charged £525 per place. Non-subscribing organisations will be charged £656 per place.

## MSA – Engaging Play & Managing Behaviour in the Playground

### TARGET GROUP:

Any staff working with children/young people during unstructured times i.e. playtime/lunch times, wishing to develop their understanding of children/young people's behaviour

### COURSE AIMS:

- To have a clear understanding of the responsibilities and importance of MSAs.
- To be confident in encouraging positive behaviour.
- To be more confident in dealing with difficult behaviour.
- To have a good understanding of the important role that play and playtimes have within the learning environment.

### INTENDED IMPACT:

- To support schools MSA staff in understanding roles and responsibilities of MSAs
- To support the professional development of schools MSA staff in encouraging positive behaviour during unstructured times in school
- To improve confidence in dealing with difficult behaviours
- To provide an opportunity for staff to share good practice and develop solution orientated and supportive practice.

**Trainer:** Penny Crossley, (MAEd) Behaviour & Parenting Consultant  
**Delegates must attend both dates**

**Date:** 3 November 2016  
**Time:** 2:00pm - 5:00pm  
 AND

**Date:** 10 November 2016  
**Time:** 2:00pm - 5:00pm  
**Venue:** Community Learning Centre, Westridge, Brading Road, Ryde, IOW, PO33 1QS  
**Cost:** Subscribing organisations will be charged £78 per place.  
 Non-subscribing organisations will be charged £97 per place.

## Behaviour for Learning

### TARGET GROUP:

Any staff working with children and young people wishing to develop their understanding of behaviour in children and young people. Teaching staff; support staff; behaviour support workers; MSAs; volunteers.

### COURSE AIMS:

- To provide a basic – intermediate level of understanding of behaviour and underpinning theories of behaviour.
- To consider goals of behaviour & the impact on children and young people's learning.
- To identify how to analyse behaviour in order to develop effective management strategies.
- To analyse the goals of behaviour & the impact on children and young people's learning.
- To provide an understanding of challenging behaviours Attention Deficit Hyperactivity Disorder (ADHD), Attention Deficit Disorder (ADD), Cognitive Dissonance (CD), Oppositional Defiant Disorder (ODD).
- To develop effective behaviour management strategies.

### INTENDED IMPACT:

- To support schools' staff in understanding of behaviour
- To improve confidence in identifying cause and effect in behaviour, emotional and social difficulties.
- To support the professional development of schools' staff in managing behaviour, emotional and social difficulties for children and young people.
- To support schools' staff in understanding the role of observation in understanding and managing behaviour.
- To improve confidence in the identification of the causes of behaviours.
- To support the professional development of schools' staff in implementing observations to support assessment of pupils BESD needs.
- To support schools' staff in development of strategies to manage challenging behaviour
- To improve confidence in managing behaviour, emotional and social difficulties.

**Trainer:** Penny Crossley, (MAEd) Behaviour & Parenting Consultant. The Crossley Company

**Dates:** 21 November 2016  
 28 November 2016  
 5 December 2016  
**Delegates must attend all dates**

**Time:** 9:30am – 4:30pm  
**Venue:** Community Learning Centre, Westridge, Brading Road, Ryde, IOW, PO33 1QS  
**Cost:** Subscribing organisations will be charged £338 per place.  
 Non-subscribing organisations will be charged £485 per place.

## Behaviour and Attendance Network Meetings

---

### TARGET GROUP:

Senior staff with inclusion responsibilities, attendance leads, behaviour leads, and pastoral care staff.

### COURSE AIMS:

These network meeting will provide an opportunity for schools to:

- Further improve inclusion policies and practices and so deliver inspiring and supportive environments that enable the inclusion of all children
- share good practice and strategies for securing high levels of attendance and reducing absence
- identify priorities and explore actions for improving behaviour network

### COURSE CONTENT:

- Updates on government legislation, national initiatives and programmes.
- Local data – attendance and exclusions.
- Trend analysis & identification of areas for action & targeted support.
- Local priorities - plans and progress.
- Promoting good attendance/promoting good behaviour – the inclusive teacher.
- Increase awareness of national and local issues, data trends and initiatives.
- Refine and develop resources to support effective CPD practice in their schools.
- Develop effective in-house and cross-school collaboration.
- Further support attendance and behaviour leads in their work to promote good pupil behaviour, effectively engage pupils in learning and reduce pupil absence.
- Time for discussion, reflection and action planning.

### LEARNING OUTCOMES:

Improve knowledge and confidence of schools of how to develop inclusive practices  
 Improvement in attendance for all, particularly children with SEN or who are looked after  
 Reduction in the number of students receiving more than one exclusion.

<b>Trainers:</b>	Karen Pothecary, Inclusion Manager, and Tracey Sanders, Hampshire County Council Education Manager (Inclusion)
<b>Date:</b>	24 November 2016
<b>Time:</b>	9:30am – 12:30pm
<b>Venue:</b>	Thompson House, Sandy Lane, Newport, IOW, PO30 3NA AND
<b>Date:</b>	18 May 2017
<b>Time:</b>	9:30am – 12:30pm
<b>Venue:</b>	Thompson House, Sandy Lane, Newport, IOW, PO30 3NA
<b>Cost:</b>	This course is fully funded by School Improvement therefore there will be no cost to attend, but a cost of £50 will be invoiced for non-attendance

## Designated Teacher for Looked After Children Network Meetings 2016-17

### TARGET GROUP:

Primary, Secondary, Special School – Designated Teachers.

### COURSE AIMS:

A network meeting for designated teachers to share good practice in providing effective support to looked after children to improve their educational outcomes.

### Autumn Term:

- Roles, responsibilities of the designated teacher and use of the PEP toolkit.

### Spring and Summer Terms:

- Assessing and identifying needs – Coventry grid for ADHD and ASD/PEP toolkit/others
- Strategies for meeting needs – understanding how we learn/attachment friendly schools/ EEFund & other interventions/ early help & input from Barnardos
- Opportunity to problem solve cases through consultation sessions using the Circle of Adults framework.

### COURSE OUTCOMES:

- Clarity regarding the roles and responsibilities of the DT
- Better support to remove some of the barriers to learning - understanding & responding to need
- Effective use of PEPs – ensuring their impact
- Ensuring good knowledge within schools of government legislation and national initiatives
- Supporting designated teachers – responding to requests/needs

### INTENDED IMPACT:

Effective support to designated teachers to build skills and knowledge to accurately assess and respond to the needs of looked after children and so maximise their engagement and progress in education.

<b>Trainer:</b>	Michelle Cain, Hampshire County Council, and Tara Diebel, Educational Psychologist
<b>Date:</b>	30 November 2016
<b>Time:</b>	9:00am - 12:00pm AND
<b>Date:</b>	9 March 2017
<b>Time:</b>	9:00am - 12:00pm AND
<b>Date:</b>	14 June 2017
<b>Time:</b>	9:00am - 12:00pm
<b>Venue:</b>	Community Learning Centre, Westridge, Brading Road, Ryde, IOW, PO33 1QS
<b>Cost:</b>	Subscribing organisations will be charged £103 per place. Non subscribing organisations will be charged £128 per place.

## Foundation Stage Leader

### TARGET GROUP:

Foundation Stage Leaders.

### COURSE AIMS:

A course aimed at developing key leadership and management aspects of the role, including using data, developing the effectiveness of the team, understanding Ofsted, monitoring and reporting etc.

<b>Trainer:</b>	Lucy Wild and Gemma Setchell, District Advisory Teachers, Service for Young Children, Hampshire County Council
<b>Date:</b>	6 December 2016
<b>Time:</b>	9:30am - 3:30pm
<b>Venue:</b>	Thompson House, Sandy Lane, Newport, IOW, PO30 3NA In addition, a follow-up session will be held in a school during the Spring term 2017. Date and times to be confirmed.
<b>Cost:</b>	Subscribing organisations will be charged £89 per place. Non-subscribing organisations will be charged £111 per place.

## Outdoor learning (Early Years Foundation Stage)

---

### TARGET GROUP:

EYFS staff and Teachers

### COURSE AIMS:

This training looks at the importance and value of learning outdoors. It highlights its advantages and value outdoor learning has on specific groups of children. It takes you on a photographic journey of best practice with top tips and practical ideas of how to make these changes in your own setting

<b>Trainer:</b>	Caroline Ardley, Advisory Teacher, Services for Young Children, Hampshire County Council
<b>Date:</b>	2 February 2017
<b>Time:</b>	9:30am – 3:30pm
<b>Venue:</b>	Thompson House, Sandy Lane, Newport, IOW, PO30 3NA
<b>Cost:</b>	No additional cost for subscribing Early Years settings. Subscribing organisations will be charged £89 per place. Non subscribing organisations will be charged £111 per place.

## Coaching for Performance (Schools and Early Years)

---

### TARGET GROUP:

Those in a supervisory role with staff, Governors and Early Years managers.

### COURSE AIMS:

Every school needs to develop and model 'good' behaviours amongst staff and pupils. We need to improve morale; create a 'gain not blame' culture and boost energy levels. It can release potential, creating opportunities within the workforce to learn about other areas and management styles. Coaching is about self-development, team development and succession planning. It is a low cost solution to implementing change and creating positivity in the face of challenge.

### INTENDED IMPACT:

Coaching should better equip staff and managers to apply a consistent approach to people management. Staff and managers will be more confident in setting and owning goals.

<b>Trainer:</b>	Dave Martin, Senior Project Officer Programme Management and Sarah Teague, Commissioner for Learning & Development, Isle of Wight Council <b><i>Delegates must attend both dates</i></b>
<b>Dates:</b>	6 March 2017 20 March 2017
<b>Time:</b>	1:00pm - 4:00pm
<b>Venue:</b>	Community Learning Centre, Westridge, Brading Road, Ryde, IOW, PO33 1QS
<b>Cost:</b>	No additional cost for subscribing Early Years settings. Subscribing organisations will be charged £48 per place. Non-subscribing organisations will be charged £60 per place.

## EYFS for NQTs or Teachers New to or Returning to EYFS

---

### TARGET GROUP:

NQTs or Teachers, new to or returning to EYFS.

### COURSE AIMS:

This course will provide a basic introduction to all key aspects of the EYFS, with a particular focus upon the role of the adult, enabling environments and the unique child. There will be a strong focus upon ensuring all teachers have a robust and clear understanding of what effective provision and practice looks like and how to put it into practice

<b>Trainer:</b>	Vicki Betts, District Advisory Teacher, Services for Young Children, Hampshire County Council
<b>Date:</b>	7 March 2017
<b>Time:</b>	9:30am – 3:30pm
<b>Venue:</b>	Community Learning Centre, Westridge, Brading Road, Ryde, IOW, PO33 1QS
<b>Cost:</b>	Subscribing organisations will be charged £89 per place. Non subscribing organisations will be charged £111 per place.

## EYFS for Headteachers or Senior Leaders New or Returning to EYFS

---

### TARGET GROUP:

Headteachers or Senior Leaders, new or returning to EYFS.

### COURSE AIMS:

A course aimed at those colleagues who may have limited or no experience of EYFS and are in positions of senior leadership within the school.

### OBJECTIVES/LEARNING OUTCOMES

The course will focus upon key documentation, strategic planning, judging quality, improving provision, monitoring and reporting, data analysis and Ofsted.

### INTENDED IMPACT:

Senior leaders will have a clear understanding of what good Early Years practice and provision looks like and how to bring about further improvement through a clear strategic direction.

<b>Trainer:</b>	Simon Francis, Senior Advisor for Early Years, Services for Young Children, Hampshire County Council.
<b>Date:</b>	10 March 2017
<b>Time:</b>	9:00am – 4:00pm
<b>Venue:</b>	Thompson House, Sandy Lane, Newport, IOW, PO30 3NA
<b>Cost:</b>	Subscribing organisations will be charged £117 per place. Non subscribing organisations will be charged £146 per place.

## Running Language Enrichment Groups (LEG groups)

---

### TARGET GROUP:

All Early Years practitioners working within the Early Years Foundation Stage.

### COURSE AIMS:

This course is for any early years practitioner to learn how to run and develop LEG groups in your setting. It will also refresh your skills if you already run the groups. A good opportunity to collect the new and improved resource manual and network with other practitioners to get fresh ideas.

The course will enable participants to:

- Learn/refresh the principles of the LEG groups.
- Learn how to run the groups and develop it further for your setting
- Share ideas and good practice with other practitioners

### INTENDED IMPACT:

To reflect on current practice and update skills for running the groups.

<b>Trainer:</b>	Speech and Language Therapy Team Early Years Advisory Team
<b>Date:</b>	4 May 2017
<b>Time:</b>	1:00pm – 4:00pm
<b>Venue:</b>	Thompson House, Sandy Lane, Newport, IOW, PO30 3NA
<b>Cost:</b>	No additional cost for subscribing Early Years settings. Subscribing organisations will be charged £44 per place. Non subscribing organisations will be charged £55 per place.

# Special Educational Needs

## Makaton Beginners (Part 1 & 2)

### TARGET GROUP:

This workshop is for anyone who communicates regularly with children and adults who use Makaton.

Previous attendance of Total Communication Session would be an advantage.

### COURSE AIMS:

The Beginners Workshop provides a practical introductory workshop for carers who need to use Makaton in everyday situations. Signing instruction is given for Core Vocabulary Stages 1-4. Makaton symbols are included and examples of their use given are discussed and developed.

The course will cover:

- What is Makaton?
- Makaton's place in the Signing World
- How are Makaton Symbols Used?
- Communicating Together
- Signs- practical session
- Signs and Symbols- practical
- Tips for Effective Signing
- Question and answer session – chance to learn signs especially relevant to your work.

### INTENDED IMPACT:

To support attendees to plan methods for implementing and using Makaton in their work.

<b>Trainer:</b>	Isle of Wight College <i>Please choose one of the dates below</i>
<b>Date:</b>	16 September 2016
<b>Time:</b>	9:00am – 5:00pm
<b>Venue:</b>	Isle of Wight College, Medina Way, Newport, IOW, PO30 5TA OR
<b>Date:</b>	2 December 2016
<b>Time:</b>	9:00am – 5:00pm
<b>Venue:</b>	Isle of Wight College, Medina Way, Newport, IOW, PO30 5TA OR
<b>Date:</b>	2 March 2017
<b>Time:</b>	9:00am – 5:00pm
<b>Venue:</b>	Isle of Wight College, Medina Way, Newport, IOW, PO30 5TA
<b>Cost:</b>	No additional cost for subscribing Early Years settings. Subscribing organisations will be charged £158 per place. Non subscribing organisations will be charged £197 per place.

## Makaton Intermediate (Part 3 & 4)

### TARGET GROUP:

This workshop is for anyone who has already attended the one day Beginners' Workshop Part 1 (Modules 1 & 2).

### COURSE AIMS:

It will enable attendees to have more extended conversations with clients and to explore issues more fully with them. Signing instructions for Stages 3 and 4 plus the additional vocabulary are taught together with improving skills and symbol use. The course covers approximately 300 signs and reflects a more extensive vocabulary for more complex conversations.

The course will cover:

- Reprise/review of Modules 1 & 2
- Communicating Together
- Signs- practical session
- Signs and Symbols- practical
- Tips for Effective Signing
- Using signs in everyday living situations
- Abstract concepts
- Additional prepositions, adjectives, adverbs and verbs
- Grammar and sentence construction
- Introduction to using draw-a-long – concept of time
- Question and answer session – chance to learn signs especially relevant to your work.

### INTENDED IMPACT:

At the end of the session attendees will have the confidence and skills to use Makaton in their daily work with children and adults for in-depth and significant conversations.

<b>Trainer:</b>	Isle of Wight College <i>Please choose one of the dates below</i>
<b>Date:</b>	30 September 2016
<b>Time:</b>	9:00am – 5:00pm
<b>Venue:</b>	Isle of Wight College, Medina Way, Newport, IOW, PO30 5TA OR
<b>Date:</b>	10 March 2017
<b>Time:</b>	9:00am – 5:00pm
<b>Venue:</b>	Isle of Wight College, Medina Way, Newport, IOW. PO30 5TA
<b>Cost:</b>	No additional cost for subscribing Early Years settings. Subscribing organisations will be charged £158 per place. Non subscribing organisations will be charged £197 per place.



## Elklan Speech and Language Support for 0-3 Year Olds

---

### TARGET GROUP:

Early Years Practitioners wanting in depth training in support for speech, language and communication development in 0-3 year olds.

### COURSE AIMS:

Elklan's evidence-based Speech and Language Support for 0-3s is our highly successful externally accredited training course which equips staff to develop these key communication skills in children proved to ensure later success in school. This is the only accredited training in speech, language and communication that is aimed specifically at those working with babies and very young children.

This practical training course will:

- Build your confidence and skills to support the communication and language development of ALL children aged 0-3 years but especially those at risk of developing speech and language difficulties.
- Give you practical advice and strategies to support parents and families with whom you work.
- Provide settings with a highly skilled workforce to help narrow the gap and improve the life chances of babies and young children.
- Give you an externally verified and accredited level 2 or 3 qualification which is on the Qualifications and Curriculum Framework (QCF).

For full course aims, please visit:  
[www.iwight.com/trainingcourses](http://www.iwight.com/trainingcourses)

### INTENDED IMPACT:

This is part of a strategic plan for all settings on IW to have at least one member of staff trained in 0-3 support in each setting.

### NOTES:

The course can be an accredited course through Apt Education Awards. Learners gain 3 credits at Level 2. There will be a charge of £35 for each learner wishing to gain accreditation. Accreditation is gained by completing a portfolio.

<b>Trainer:</b>	Alison Davies, Speech and Language Therapy Manager, and Cori Green, SLT Department, St Mary's Hospital  Alison is an experienced therapist and Elklan trainer for the past 3 years as well as having delivered training to Early Years staff for over 20 years. Alison has been project coordinator of the recent Talking Matters project on the Island to set up this training for settings.  Cori is an experienced speech and language therapist and trainer, who is experienced in delivering Elklan courses here on the IW. Cori currently delivers therapy to young children with speech or language difficulties in a range of early years settings.
<b>Dates:</b>	22 September 2016 29 September 2016 6 October 2016 13 October 2016 20 October 2016 3 November 2016 10 November 2016 17 November 2016 24 November 2016 1 December 2016  <b><i>Delegates must attend all dates</i></b>
<b>Time:</b>	9:00am – 11:00am
<b>Venue:</b>	Thompson House, Sandy Lane, Newport, IOW, PO30 3NA
<b>Cost:</b>	No additional cost for subscribing Early Years settings, unless accreditation is required

## Elklan Speech and Language Support for 5-11s

---

### TARGET GROUP:

Mainstream primary learning support assistants

### COURSE AIMS:

This course aims to give an overview of the impact of speech, language and communication needs (SLCN) in the primary school age group, as well as practical strategies to help support children experiencing these difficulties. Learners complete a portfolio to evidence their learning

### OBJECTIVES/LEARNING OUTCOMES:

Learners will have an increased understanding of SLCN and will have a range of strategies at their disposal which can be used to support children's communication whenever and wherever they are being taught

### INTENDED IMPACT:

Increased awareness and capability within mainstream primary schools in supporting SLCN

### RECOMMENDED READING MATERIALS:

*Language Builders* available from [www.elklan.co.uk](http://www.elklan.co.uk) £22

<b>Trainer:</b>	Rebecca O'Hearn, Speech and Language Therapist Becks is a speech and language therapist working within mainstream schools across the Isle of Wight. She has worked with children with a wide range of speech, language and communication needs in a variety of settings.
<b>Dates:</b>	22 September 2016 29 September 2016 6 October 2016 13 October 2016 20 October 2016 3 November 2016 10 November 2016 17 November 2016 24 November 2016 1 December 2016 <b><i>Delegates to attend all dates</i></b>
<b>Time:</b>	1.00pm – 3.00pm
<b>Venue:</b>	Thompson House, Sandy Lane, Newport, IOW, PO30 3NA
<b>Cost:</b>	Subscribing organisations will be charged £208. per place. Non subscribing organisations will be charged £259 per place. If you choose to undertake the accreditation there will be a £55.00 charge to your school for the accredited option (Level 2 or Level 3).



## Communication Counts

---

### TARGET GROUP:

Early Years Practitioners wanting an introduction to speech, language and communication development in 0-3 year olds.

### COURSE AIMS:

A practical training course for staff working in Early Years settings to enable them to develop the communication skills of babies and very young children. Developed to support the revised EYFS framework this course links research on early language development with best practice to give practitioners up to date theoretical knowledge and practical tools to promote communication. It forms a key step in achieving Communication Friendly Setting Status.

The course will cover:

#### What is communication?

Learn about what is involved in communication and some of the terms used.

Reflect on the development of communication and how this can be monitored so that young children who are at risk of delayed speech and language can be identified.

#### Modifying the setting to make it communication friendly and adult-child interaction

Creating a communication friendly setting by reflecting on the environment.

Examine the effect adult-child interaction has on the development of communication.

#### The Word Journey

Explore typical development of vocabulary learning. Learn strategies to help children to develop a wide and varied vocabulary.

#### The Language Journey

Non-verbal communication

Explore typical development of understanding spoken language and talking.

Reflect on modelling language for young children and other strategies to develop their language skills.

#### Working with families and linking it all together

Consider how we can improve working with families. Discuss how a play resource or opportunity can be used to promote young children's speech, language and communication but particularly for those who are

### INTENDED IMPACT:

This is part of a strategic plan for all settings on IW to have staff trained in SLC and the training is a key step in a setting achieving Communication Friendly Setting Status.

### NOTES:

The course can be an accredited course through Apt Education Awards. Learners gain 3 credits at Level 2. There will be a charge of £35 for each learner wishing to gain accreditation. Accreditation is gained by completing a portfolio.

**Trainer:** Alison Davies, Speech and Language Therapy Manager, and Vicky Jones, SENCO, Under 3's Co-ordinator, Fun2Learn Nursery

Alison is an experienced therapist and Elklan trainer for the past 3 years as well as having delivered training to Early Years staff for over 20 years. She has been a project coordinator of the recent Talking Matters project on the Island to set up this training for settings.

Vicky has worked in the same setting for 14 years, starting with the after-school club and then in pre-school. For 12 years she has been the supervisor of the under three's pre-school room and coordinated with the baby room leader to ensure consistency and quality in our under three provision. For the last three years Vicky has also been the setting SENCO and worked closely with children, families and other agencies and professionals. She is also a key person and equally support the development of children with no SEN or delay to reach their full potential. Within her setting she has delivered a variety of training over the past two years, and is now an Elklan Communication Counts Trainer.

#### **Please choose one of the dates below:**

**Date:** 21 October 2016

**Time:** 9:00am – 2:30pm

**Venue:** Community Learning Centre, Westridge, Brading Road, Ryde, IOW, PO33 1QS  
OR

**Date:** 26 January 2017

**Time:** 9:00am – 2:30pm

**Venue:** Thompson House, Sandy Lane, Newport, IOW, PO30 3NA  
OR

**Date:** 3 March 2017

**Time:** 9:00am - 2:30pm

**Venue:** Thompson House, Sandy Lane, Newport, IOW, PO30 3NA

**Cost:** No additional cost for subscribing Early Years settings.

## SENCo Networking Sessions

---

### TARGET GROUP:

All preschool and day nursery SENCo's.

### COURSE AIMS

- To be able to discuss issues relevant to early years SEN.
- To be able to plan and evaluate effective support for children with SEN in all settings.
- To discuss strategies and politics relating to early years SEN.
- To provide opportunities for networking, sharing, good practice and future planning.

### INTENDED IMPACT:

To enhance and improve knowledge and skills in early years SEN practice.

<b>Trainer:</b>	Esta Ford and Sheila Packham, Early Years SEN Advisors (Inclusion)
<b>Date:</b>	4 October 2016
<b>Time:</b>	1:30pm – 3:00pm
<b>Venue:</b>	Thompson House, Sandy Lane, Newport, IOW, PO30 3NA AND
<b>Date:</b>	17 January 2017
<b>Time:</b>	1:30pm – 3:00pm
<b>Venue:</b>	Thompson House, Sandy Lane, Newport, IOW, PO30 3NA AND
<b>Date:</b>	2 May 2017
<b>Time:</b>	1:30pm – 3:00pm
<b>Venue:</b>	Thompson House, Sandy Lane, Newport, IOW, PO30 3NA
<b>Cost:</b>	No additional cost for subscribing Early Years settings.

## Portage Workshop – A Small Steps Approach to Learning For Children with SEN

---

### TARGET GROUP:

Early Years Practitioners.

### COURSE AIMS:

- To develop knowledge of the Portage Principles and models of support.
- To develop an understanding of the small steps approach to learning.
- To develop an understanding of why some behaviours occur and how they can be changed.

### OBJECTIVES/LEARNING/OUTCOMES

- To be able to incorporate the Portage model when working with children with SEND and their families.
- To understand why play is so important and consider how the development of play can be supported in children with SEND.

### INTENDED IMPACT:

- To be confident to implement Portage principles and learnt skills into the workplace.
- To be able to use a wide range of materials and resources when working with children with SEND.

<b>Trainer:</b>	Kay Farrow, Early Years SEN Advisor (Portage)
<b>Date:</b>	14 November 2016
<b>Time:</b>	9:30am – 4:30pm
<b>Venue:</b>	Community Learning Centre, Westridge, Brading Road, Ryde, IOW, PO33 1QS AND
<b>Date:</b>	15 November 2016
<b>Time:</b>	9:30am – 4:30pm
<b>Venue:</b>	Community Learning Centre, Westridge, Brading Road, Ryde, IOW, PO33 1QS AND
<b>Date:</b>	24 January 2017
<b>Time:</b>	9:30am – 4:30pm
<b>Venue:</b>	Community Learning Centre, Westridge, Brading Road, Ryde, IOW, PO33 1QS
	<b><i>Delegates must attend all dates</i></b>
<b>Cost:</b>	No additional cost for subscribing Early Years settings. Subscribing organisations will be charged £38 per place. Non subscribing organisations will be charged £47 per place.

## Story Links

### TARGET GROUP:

SEN teachers, SENCOs, inclusion support teachers, school counsellors, HSLWs, behaviour and family support workers working with vulnerable pupils at Key Stage 1 and 2.

### COURSE AIMS:

Story Links is particularly helpful in addressing the needs of vulnerable children, who are at risk of exclusion or who exclude themselves by non-attendance or withdrawal from interaction with others. It is based on Attachment Theory and seeks to foster good attachment through the medium of co-creating stories, as well as to improve reading skills by removing emotional barriers to practice. It is an ideal intervention for looked after children and a good use of Pupil Premium.

### OBJECTIVES/LEARNING OUTCOMES

Attendees will learn how to deliver the Story Links intervention, which aims to:

- Improve pupils' behaviour.
- Improve reading skills.
- Reduce number of incidents that can lead to exclusion from classroom.
- Reduce stress for pupils, parents and professionals.
- Improve parent/pupil/school relationships.
- Increase parent-partnership skills of professionals attending the 3-day training.

### INTENDED IMPACT:

Research funded by the TDA found that Story Links increased parental involvement in pupils' learning, improved behaviour in school and increased pupils' engagement with reading.

<b>Trainer:</b>	Jacqueline Batchelor, Educational Psychologist
	<b><i>Delegates must attend all dates</i></b>
<b>Dates:</b>	2 December 2017 20 January 2017 10 February 2017
<b>Time:</b>	9:00am – 3:30pm
<b>Venue:</b>	Community Learning Centre, Westridge, Brading Road, Ryde, IOW, PO33 1QS
<b>Cost:</b>	Subscribing organisations will be charged £508 per place. Non subscribing organisations will be charged £635 per place.

## Early Years SEN Working Together

### TARGET GROUP:

Early years Practitioners with special interest for Early Years SENCO's.

### COURSE AIMS:

- To be able to support the learning and development of children with additional needs.
- To be able to generalise and transfer knowledge and skills.
- To be able to plan and evaluate appropriate outcomes for children.

### OBJECTIVES/LEARNING OUTCOMES:

- How to effectively use resources and funding to support the development of all children.
- Refreshing and updating knowledge on current paperwork and procedures.
- Practical workshops to support children with SEN in your early years setting.

### INTENDED IMPACT:

Enhance and improve knowledge and skills in Early Years SEN Practice.

### RESOURCES REQUIRED:

Bring examples of how practice has effected the development of children. (good and bad!)

<b>Trainer:</b>	Members of the Early years SEN Advisory Team
	<b><i>Please choose one of the dates below:</i></b>
<b>Date:</b>	27 January 2017
<b>Time:</b>	9:30am – 3:00pm
<b>Venue:</b>	Thompson House, Sandy Lane, Newport, IOW, PO30 3NA OR
<b>Date:</b>	22 June 2017
<b>Time:</b>	9:30am – 3:00pm
<b>Venue:</b>	Community Learning Centre, Westridge, Brading Road, Ryde, IOW, PO33 1QS
<b>Cost:</b>	No additional cost for subscribing Early Years settings.

## SENCo Induction Training

---

**TARGET GROUP:**

All preschool and day nursery SENCo's new to post.

**COURSE AIMS:**

- For learners to have an understanding of the role of a SENCo.
- The role of the area SENCo and other agencies.
- The importance of an inclusive environment.
- For practitioners to have a greater understanding of the role and responsibilities of a SENCo in an inclusive early years setting.

**INTENDED IMPACT:**

For all new early years new to post SENCo's to have a greater understanding of the role and responsibilities of a SENCo in an early years setting.

<b>Trainer:</b>	Esta Ford and Sheila Packham, Early Years SEN Advisors (Inclusion)
<b>Date:</b>	1 March 2017
<b>Time:</b>	9:30am – 3:00pm
<b>Venue:</b>	Thompson House, Sandy Lane, Newport, IOW, PO30 3NA
<b>Cost:</b>	No additional cost for subscribing Early Years settings.

## SEN and the Code of Practice for Childminders

---

**TARGET GROUP:**

Childminders.

**COURSE AIMS:**

For childminders to have an understanding of the role of SEN and the Code of Practice for Childminders.

**OBJECTIVES/LEARNING OUTCOMES:**

For learners to have a greater understanding of the role and responsibilities of a senco in an inclusive early years setting.

**INTENDED IMPACT:**

For all new early years new to post senco's to have a greater understanding of the role and responsibilities of a senco in an early years setting.

<b>Trainer:</b>	Esta Ford and Sheila Packham, Early Years SEN Advisory Team
<b>Date:</b>	9 March 2017
<b>Time:</b>	6:30pm – 9:00pm
<b>Venue:</b>	Thompson House, Sandy Lane, Newport, IOW, PO30 3NA
<b>Cost:</b>	No additional cost for subscribing Early Years settings.

# School Sports

## RFU Kids First Tag Rugby (Introduction to Tag Rugby)

---

### TARGET GROUP:

Primary School Teachers and Teaching Assistant's.

### COURSE AIMS:

Tag Rugby is a fast-moving, non-contact invasion game suitable for boys and girls to play together. This workshop introduces games and practices to develop tag rugby skills to assist with delivering rugby in an enjoyable, simple and safe way. It will introduce the rules and the opportunity to gain skills to referee.

### OBJECTIVES/LEARNING OUTCOMES

Upon completion of this workshop, candidates will:

- Be fully aware of the holistic needs of children playing sport and be able to meet these needs when delivering rugby sessions.
- Have an understanding of how to teach rugby in a fully inclusive, engaging and enjoyable manner.
- Be able to enhance learning and children's motivation through the use of rewards.
- Be able to use rugby to meet the outcomes of the new National Curriculum for Physical Education.

### INTENDED IMPACT:

To enable teachers to implement the National Curriculum, achieve a high quality of delivery and provide a satisfying and progressive work for children.

<b>Trainer:</b>	Richard Freeman, RFU Community Rugby Coach
<b>Date:</b>	28 September 2016
<b>Time:</b>	4:00pm – 6:15pm
<b>Venue:</b>	Lanesend Primary School, Love Lane, Cowes, IOW, PO31 7ES
<b>Cost:</b>	Subscribing organisations will be charged £64 per place. Non-subscribing organisations will be charged £80 per place.

## KS1 Gymnastics (apparatus focussed)

---

### TARGET GROUP:

Primary School Teachers, Teaching Assistant's and any other staff members who are, or would like to be, involved in the delivery of Gymnastics

### COURSE AIMS:

This practical 2 hour workshop will give delegates practical guidance on the delivery of National Curriculum Gymnastics focusing on developing sequence work from the floor to apparatus, including the handling, construction and use of apparatus.

This workshop is suitable for people of all experiences from novice to experienced deliverers.

The workshop will include:

- Organisation of apparatus within a lesson.
- Group organisation for setting up apparatus.
- Introduction and progressive use of apparatus.
- Using the whole area approach.
- Transition from floor to apparatus.
- Working on apparatus.

### INTENDED IMPACT:

To enable teachers to implement the National Curriculum, achieve a high quality of delivery and provide a satisfying and progressive work for children. A variety of lesson plans and resource ideas will be provided.

<b>Trainer:</b>	Nicky Metcalf and Karen Lakey
<b>Date:</b>	5 October 2016
<b>Time:</b>	4:00pm – 6:00pm
<b>Venue:</b>	Lanesend Primary School, Love Lane, Cowes, IOW, PO31 7ES
<b>Cost:</b>	Subscribing organisations will be charged £64 per place. Non-subscribing organisations will be charged £80 per place.

## Key Stage 1 and 2 Mini Basketball

---

### TARGET GROUP:

Anyone involved in delivering PE at Primary level.

### COURSE AIMS:

This practical 2 hour workshop will give Primary School Teachers/TA's practical guidance on the delivery of National Curriculum Basketball providing core games to develop skill and tactical understanding.

### OBJECTIVES/LEARNING OUTCOMES:

This workshop is suitable for people of all experiences from novice to experienced deliverers.

The workshop will include:

- Basic stance
- Dribbling
- Passing & Receiving
- Stopping & Starting
- Faking
- Getting free
- Shooting
- Defensive Play
- Mini basketball rules, Officiating & Scoring

### INTENDED IMPACT:

To enable teachers to implement the National Curriculum, achieve a high quality of delivery and provide a satisfying and progressive work for children.

#### Trainer:

**Date:** 9 November 2016

**Time:** 4:00pm – 6:00pm

**Venue:** Barton Primary School, Furlongs, Newport, IOW, PO30 2AX

**Cost:** Subscribing organisations will be charged £64 per place.

Non subscribing organisations will be charged £80 per place.

## KS2 Gymnastics (apparatus focussed)

---

### TARGET GROUP:

Primary School Teachers, Teaching Assistant's and any other staff members who are or would like to be involved with Gymnastics delivery.

### COURSE AIMS:

This practical 2 hour workshop will give Primary School Teachers/TA's practical guidance on the delivery of National Curriculum Gymnastics focusing on developing sequence work from the floor to apparatus, including the handling, construction and use of apparatus.

This workshop is suitable for people of all experiences from novice to experienced deliverers.

The workshop will include:

- Organisation of apparatus within a lesson
- Group organisation for setting up apparatus
- Introduction and progressive use of apparatus
- Using the whole area approach
- Transition from floor to apparatus
- Working on apparatus

A variety of lesson plans and resource ideas will be provided.

### INTENDED IMPACT:

To enable teachers to implement the National Curriculum, achieve a high quality of delivery and provide a satisfying and progressive work for children.

**Trainer:** Nicky Metcalf & Karen Lakey

**Date:** 16 November 2016

**Time:** 4:00pm – 6:00pm

**Venue:** Lanesend Primary School, Love Lane, Cowes, IOW, PO31 7ES

**Cost:** Subscribing organisations will be charged £64 per place.

Non subscribing organisations will be charged £80 per place.



## Key Stage 1 and 2 Inclusive PE

### TARGET GROUP:

Primary school teachers, TA's, Learning Support Assistants, SEN Coordinators or anyone involved in delivering PE at Primary level.

### COURSE AIMS:

This NEW practical 2hr workshop is designed to give Primary PE deliverers an opportunity to gain and share ideas for the delivery of Inclusive PE activities. This will give pupils the opportunity to participate in and gain an awareness of inclusive sport and the ethos of the Para Olympics and Invictus Games.

It aims to equip candidates with new ideas on how to make PE Lessons engaging, barrier free and inclusive to all pupils. The workshop will be full of ideas for everyday PE lessons from warm ups to organizing team games. The workshop will explore creative ideas to support disabled young people to take part in physical activity and sport, feel valued and make progress in lessons.

The workshop will cover:

- Para Olympic Sports:
- Sitting Volleyball & Goal Ball
- Adapted versions of wheelchair sports:
- Shuffle Rugby & Shuffle Basketball

The course will also provide an opportunity for candidates to share best practice along with own games/ideas.

### INTENDED IMPACT:

Attending this course will enable teachers to implement the National Curriculum, achieve a high quality of delivery and provide a satisfying, inclusive and progressive work for children.

<b>Trainer:</b>	Tony Harris, QTS & Lv2 Multisport Coach
<b>Date:</b>	5 December 2016
<b>Time:</b>	4:00pm – 6:00pm
<b>Venue:</b>	Greenmount Primary School, St Vincent's Road, Ryde, IOW, PO33 3PT
<b>Cost:</b>	Subscribing organisations will be charged £64 per place. Non-subscribing organisations will be charged £80 per place.

## Early Years Multi Skills

### TARGET GROUP:

Early Years Practitioners, Reception and Key Stage 1 Teachers and Teaching Assistant's.

### COURSE AIMS:

This workshop is designed to assist Early Years Teachers in delivering the essential principles of movement during PE lessons. Particular focus will be made on the teaching of the fundamental movements (agility, balance & coordination) along with fundamental movement and sports skills (running, jumping, throwing, catching, rolling, striking & kicking) It will provide imaginative ideas and practices that can be used to deliver a fun and progressive multi skills lesson.

### OBJECTIVES/LEARNING OUTCOMES

Participants will learn how to:

- Teach the core movement skills.
- Identify and correct skills.
- Deliver engaging, progressive, co-operative and competitive activities.

The workshop will also provide awareness of the necessary health and safety requirements in delivering games in Primary Schools.

### INTENDED IMPACT:

To enable teachers to implement the National Curriculum, achieve a high quality of delivery and provide a satisfying and progressive work for children.

<b>Trainer:</b>	Andy Day, Level 2 Multi Sport Coach Premier School Sport Coaching Ltd
<b>out</b>	The PE and School Sport Courses will be delivered by Premier School Sport Coaching using qualified teachers and specialist school sport coaches. The company rose of the ashes of the School Sport partnerships and the school restructuring. All tutors are greatly experienced in delivering Primary School CPD and are currently working within primary schools.
<b>Date:</b>	19 January 2017
<b>Time:</b>	4:00pm – 6:00pm
<b>Venue:</b>	Barton Primary School, Furrongs, Newport, IOW, PO30 2AX
<b>Cost:</b>	Subscribing organisations will be charged £64 per place. Non-subscribing organisations will be charged £80 per place.

## Quicksticks Hockey - NEW

---

### TARGET GROUP:

Primary School Teachers, TA's or anyone involved in delivering PE at Primary School level.

### COURSE AIMS:

This NEW practical workshop will give an introduction into this official junior four-a-side game of hockey for 7-11year olds. This fun, safe and exciting game takes no prior knowledge of Hockey to deliver, therefore allowing Teachers new to Hockey to teach it. Playable on any surface, it uses a larger, lighter and safer ball and has no goal keepers, fewer players and fewer stoppages.

### OBJECTIVES/LEARNING OUTCOMES:

This workshop is designed to support and guide the delivery and facilitation of the Quicksticks game. The workshop will include:

- Introduction to Quicksticks.
- The rules and how it is played.
- Safe practice.
- Planning and delivering.
- Imaginative ideas and practices for skills required for the game.

### INTENDED IMPACT:

To enable teachers to implement the National Curriculum, achieve a high quality of delivery and provide a satisfying and progressive work for children.

<b>Trainer:</b>	Jon Milton, Teacher & Coach for IW Junior and Ladies Team
<b>Date:</b>	7 February 2017
<b>Time:</b>	4:30pm – 6:00pm
<b>Venue:</b>	The Island Free School, Leeson Road, Ventnor, Isle of Wight, PO38 1PR
<b>Cost:</b>	Subscribing organisations will be charged £64 per place. Non subscribing organisations will be charged £80 per place.

## Key Stage 1 and 2 Outdoor Adventurous Activities (OAA)

---

### TARGET GROUP:

Primary School Teachers, Teaching Assistant's and anyone involved in delivering PE at Primary School level.

### COURSE AIMS:

This two hour workshop will give candidates an introduction to diverse sports and adventurous activities that can be used to deliver the Outdoor and Adventurous Activity strand of the National Curriculum.

### OBJECTIVES/LEARNING OUTCOMES

This workshop will introduce fun, physical and useful activities that can be used on the school site, providing exciting challenges for individuals and teams. The workshop will cover:

- Physical challenges and orienteering.
- Trails.
- Team work and decision making.

### INTENDED IMPACT:

To enable teachers to implement the National Curriculum, achieve a high quality of delivery and provide a satisfying and progressive work for children.

<b>Trainer:</b>	Tony Harris
<b>Date:</b>	31 March 2017
<b>Time:</b>	4:00pm – 6:00pm
<b>Venue:</b>	Greenmount Primary School, St Vincent's Road, Ryde, IOW, PO33 3PT
<b>Cost:</b>	Subscribing organisations will be charged £64 per place. Non subscribing schools will be charged £80 per place.

## Chance to Shine Primary Cricket

---

**TARGET GROUP:**

Anyone involved in delivering PE at Primary level.

**COURSE AIMS:**

This workshop is designed to help delegates develop their confidence and equip them with the knowledge, understanding and applied skills to teach cricket within physical education, school sport and the wider curriculum.

Over the course of the session attendees will be taught 'how to' and 'what to' coaching skills, and will finish with learning how to organize, umpire, score and manage cricket activities.

**INTENDED IMPACT:**

To enable teachers to implement the national curriculum, achieve a high quality of delivery and provide a satisfying and progressive work for children.

<b>Trainer:</b>	Andy Day, Lv2 Multisport Coach
<b>Date:</b>	27 April 2017
<b>Time:</b>	4:00pm – 6:00pm
<b>Venue:</b>	Queensgate Primary School, Beatrice Avenue, East Cowes, IOW, PO32 6PA
<b>Cost:</b>	Subscribing organisations will be charged £64 per place. Non-subscribing organisations will be charged £80 per place.

# Safeguarding Programme

## Safeguarding Foundation

### TARGET GROUP:

Staff who fall within the category 'Group 2' as per the Isle of Wight Safeguarding Children Board (IOWSCB) Training Policy.

Staff and volunteers who work regularly with children, young people and with adults who are parents/carers.

Staff who have considerable professional and organisational responsibility for safeguarding and promoting children and young people's welfare.

Examples include:

Childminders; Children's Centre staff; Midday Supervisors; Sports Coaches; Teachers; Teaching Assistants; School administrators; School secretaries; Headteachers; Youth workers; Library staff; Elected members; Early Years Managers.

### COURSE AIMS:

- Know current legislation and guidance, both nationally and locally.
- Recognise signs of abuse and neglect.
- Know about the thresholds for intervention and levels of need.
- Know about Early Help and the Common Assessment Framework (CAF).
- Recognise the vulnerabilities of specific groups and the impact of some parenting issues on parental capacity.
- Examine the guidance around effective recording.
- Examine best practice guidance around working with families.
- Know about Serious Case Reviews and the lessons we can learn from them.
- Apply locally agreed protocol for sharing and reporting concerns.
- Know who to contact if there were concerns about a colleague's behaviour.

### INTENDED IMPACT:

To improve the attendees competence and confidence in fulfilling their responsibility to safeguard and promote the welfare of children within their organisation.

<b>Trainer:</b>	Laura Clark, Safeguarding Training Officer <b>Please choose one of the dates below:</b>
<b>Date:</b>	15 September 2016
<b>Time:</b>	9:30am - 4:30pm
<b>Venue:</b>	Thompson House, Sandy Lane, Newport, IOW, PO30 3NA OR
<b>Date:</b>	20 September 2016
<b>Time:</b>	9:30am - 4:30pm
<b>Venue:</b>	Community Learning Centre, Westridge, Brading Road, Ryde, IOW, PO33 1QS OR
<b>Date:</b>	7 October 2016
<b>Time:</b>	9:30am - 4:30pm
<b>Venue:</b>	Thompson House, Sandy Lane, Newport, IOW, PO30 3NA OR
<b>Date:</b>	14 October 2016
<b>Time:</b>	9:30am - 4:30pm
<b>Venue:</b>	Thompson House, Sandy Lane, Newport, IOW, PO30 3NA OR
<b>Date:</b>	4 November 2016
<b>Time:</b>	9:30am - 4:30pm
<b>Venue:</b>	Thompson House, Sandy Lane, Newport, IOW, PO30 3NA OR
<b>Date:</b>	8 November 2016
<b>Time:</b>	9:30am - 4:30pm
<b>Venue:</b>	Thompson House, Sandy Lane, Newport, IOW, PO30 3NA OR
<b>Date:</b>	29 November 2016
<b>Time:</b>	9:30am - 4:30pm
<b>Venue:</b>	Thompson House, Sandy Lane, Newport, IOW, PO30 3NA OR
<b>Date:</b>	15 December 2016
<b>Time:</b>	9:30am - 4:30pm
<b>Venue:</b>	Thompson House, Sandy Lane, Newport, IOW, PO30 3NA
<b>Cost:</b>	£60 per person for subscribing organisations and charities. £75 per person for non-subscribing organisations. No additional cost for subscribing Early Years settings. For in-house delivery costs for your organisation please contact: <a href="mailto:learning.development@iow.gov.uk">learning.development@iow.gov.uk</a>

## CAF (Common Assessment Framework) and Information Sharing Training

---

### TARGET GROUP:

Any staff member or volunteer who works with; children, young people and their families or carers

### COURSE AIMS:

- Have improved practitioner confidence to share information about their clients appropriately.
- Have an understanding of the local thresholds for different tiers of need.
- Be clear about the IOW CAF process and how to chair an effective TAF (Team Around the Family) meeting.

### INTENDED IMPACT:

Improved confidence in the CAF and its benefits for families.

<b>Trainer:</b>	Dave Piggott and Carol Attrill (CAF Co-ordinators), Isle of Wight Council <b>Please choose one of the dates below:</b>
<b>Date:</b>	20 September 2016
<b>Time:</b>	9:30am – 4:00pm
<b>Venue:</b>	Thompson House, Sandy Lane, Newport, IOW, PO30 3NA OR
<b>Date:</b>	15 October 2016 (Childminders)
<b>Time:</b>	9:30am – 12:30pm
<b>Venue:</b>	Community Learning Centre, Westridge, Brading Road, Ryde, IOW, PO33 1QS OR
<b>Date:</b>	18 October 2016
<b>Time:</b>	9:30am – 4:00pm
<b>Venue:</b>	Community Learning Centre, Westridge, Brading Road, Ryde, IOW, PO33 1QS OR
<b>Date:</b>	24 November 2016
<b>Time:</b>	9:30am – 4:00pm
<b>Venue:</b>	Community Learning Centre, Westridge, Brading Road, Ryde, IOW, PO33 1QS OR
<b>Date:</b>	17 January 2017
<b>Time:</b>	9:30am – 4:00pm
<b>Venue:</b>	Community Learning Centre, Westridge, Brading Road, Ryde, IOW, PO33 1QS OR
<b>Date:</b>	16 February 2017
<b>Time:</b>	9:30am – 4:00pm
<b>Venue:</b>	Thompson House, Sandy Lane, Newport, IOW, PO30 3NA OR
<b>Date:</b>	14 March 2017
<b>Time:</b>	9:30am – 4:00pm
<b>Venue:</b>	Community Learning Centre, Westridge, Brading Road, Ryde, IOW, PO33 1QS
<b>Cost:</b>	No charge to attend, but a cost of £50 will be invoiced for non-attendance.

## Designated Officers for Safeguarding and Child Protection

---

### TARGET GROUP:

Staff who fall within the categories 'Group 3 and 4' as per the Isle of Wight Safeguarding Children Board (IOWSCB) Training Policy.

Staff and volunteers who work regularly with children, young people and with adults who are parents/carers.

Staff who have particular and substantial responsibilities for safeguarding and promoting children and young people's welfare, and are expected to act on children and young people's welfare concerns.

Examples include:

Child Protection Liaison Officers (CPLO);  
Childminders; Headteachers; Police officers; Foster carers; School nurses; Early Years Managers.

**Staff must have completed the Safeguarding Foundation course prior to attending.**

### COURSE AIMS:

- Know about the role and level of responsibility.
- Applying professional judgements to make decisions around a child's welfare.
- Recognise the need to assess risk and harm.
- Know about child-centred practice.
- Know the protocols involved in child protection cases (Section 47, Case conference etc).
- Apply best practice guidance to recording.
- Examine best practice guidance to working with parents and maintaining positive relationships.
- Identify ways to offer advice and guidance to other staff and know about escalating concerns when there are disagreements.
- Examine protocols for managing allegations against staff.
- Evaluate practice within organisation against current guidance.

### INTENDED IMPACT:

To equip the attendee with knowledge and skills to undertake their role in line with national and local guidance.

<b>Trainer:</b>	Laura Clark, Safeguarding Training Officer <b><i>Please choose one of the dates below:</i></b>
<b>Date:</b>	23 September 2016
<b>Time:</b>	9:30am - 4:30pm
<b>Venue:</b>	Thompson House, Sandy Lane, Newport, IOW, PO30 3NA OR
<b>Date:</b>	6 October 2016
<b>Time:</b>	9:30am - 4:30pm
<b>Venue:</b>	Community Learning Centre, Westridge, Brading Road, Ryde, IOW, PO33 1QS OR
<b>Date:</b>	10 November 2016
<b>Time:</b>	9:30am - 4:30pm
<b>Venue:</b>	Thompson House, Sandy Lane, Newport, IOW, PO30 3NA OR
<b>Date:</b>	1 December 2016
<b>Time:</b>	9:30am - 4:30pm
<b>Venue:</b>	Thompson House, Sandy Lane, Newport, IOW, PO30 3NA
<b>Cost:</b>	£60 per person for subscribing organisations and charities. £75 per person for non-subscribing organisations. No additional cost for subscribing Early Years settings. For in-house delivery costs for your organisation please contact: learning.development@iow.gov.uk

# Health and Safety

## Personal Safety and Lone Working

---

### TARGET GROUP:

This course is recommend for anyone who deals with service-users on a daily basis, particularly those who may find themselves alone in a potentially abusive environment. Places are very limited so please apply as soon as possible.

### COURSE AIMS:

The Suzy Lamplugh trust was established following the disappearance of estate agent Suzy Lamplugh. The trusts mission is to “campaign, educate and support people to help reduce the risk of violence and aggression for everyone”. The issue of violence and aggression at work is particularly relevant to public sector workers, with violent incidents against them almost doubling over the last decade.

### Did you know?

1 in 4 teachers have been victims of physical violence.

9 out of 10 social workers have been assaulted or threatened.

As part of the councils on-going programme of support, the Suzy Lamplugh Trust will be delivering a one day workshop, the aim of which is to help delegates spot the danger signs associated with lone working. Attendees will be given the benefit of the trusts vast experience in order to help them deal with abusive or potentially violent service-users.

This course will enable participants to:

- Spot danger signs and apply planned and practiced diffusion skills to manage volatile situations.
- Deal with abusive or potentially violent service-users.
- Work in a safer environment
- Ensure personal safety at work becomes an integral part of the job.

### INTENDED IMPACT:

Practical workshops that raise staff personal safety awareness, and identify how to make sound decisions to avoid and reduce risk. Learn how to incorporate quick, easy to use dynamic risk assessment tools and how to make 'being safe at work' just part of the job.

<b>Trainer:</b>	Suzy Lamplugh Trust, National Centre for Personal Safety
<b>Date:</b>	5 October 2016
<b>Time:</b>	9:30am - 4:30pm
<b>Venue:</b>	Thompson House, Sandy Lane, Newport, IOW, PO30 3NA
<b>Cost:</b>	No further charge for subscribing organisations. Non subscribing and external organisations will be charged £155 per place. Voluntary/charity organisations will be charged £109 per place.

## Schools Fire Marshal Training

---

### TARGET GROUP:

Designated Fire Marshalls. Staff that need Fire Marshal training to cover the statutory requirement of Health & Safety in the workplace and those renewing after 3 years.

### Course Aims:

- The role of the fire marshal.
- Liaison with the fire service.
- Action on discovering a fire.
- Fire safety legislation.
- The chemistry of fire.
- Common causes of fire.
- Fire safety precautions.
- Fire drills and evacuation.
- How to use fire extinguishers.

Practical demonstration and use of the following extinguishing medium on real fires:

- Water
- Aqua Spray
- Foam
- CO2
- Dry Powder
- Fire Blanket

Practical demonstration of the hazards of:

- Applying water to a chip pan
- Pressurised containers involved in fire

Completion of a self-evacuation exercise from a smoke filled building.

### INTENDED IMPACT:

Staff to have a full awareness of requirements.

**Trainer:** Fire Safe Training  
**Date:** 19 October 2016  
**Time:** 9:30am – 4:30pm  
**Venue:** North Fairlee Farm, 301 Fairlee Road, Newport, Isle of Wight, PO30 2JU  
**Cost:** Subscribing organisations will be charged £133 per place.  
 Non subscribing organisations will be charged £167 per place.

## Managing Exam Stress for Teachers and Support Staff

---

### TARGET GROUP:

All teachers and support staff.

### COURSE AIMS:

This course is designed to help teachers and support staff manage the emotions and stress that exams seem to create for the children in their care (and sometimes themselves).

It will explore the physiology of anxiety and why it happens, consider strategies to reduce and manage strong emotions and anxiety and offer an opportunity to share ideas and discuss thoughts that have been provoked by the topics covered.

By the end of the course, participants should feel equipped to support young people and help them to reach their full potential.

**Trainer:** Kate Golding  
***Please choose one of the sessions below:***  
**Date:** 3 March 2017  
**Time:** 9:30am - 12:30pm  
 OR  
**Date:** 3 March 2017  
**Time:** 1:30pm - 4:30pm  
**Venue:** Community Learning Centre, Westridge, Brading Road, Ryde, IOW, PO33 1QS  
**Cost:** Subscribing organisations will be charged £69 per place.  
 Non subscribing organisations will be charged £86 per place.



# First Aid Programme

## First Aid at Work Re-qualification

### TARGET GROUP:

All delegates that have completed the full 3 day first aid course, and within the three year re-qualification date.

### COURSE AIMS:

By the end of the course, delegates will understand/ be able to demonstrate:

- Principles and priorities of First Aid
- Cardio Pulmonary Resuscitation (CPR)
- Treatment of choking
- Causes of the unconscious patient
- Head injuries & stroke
- Recognition & causes of Hypoxia
- Circulatory problems
- Cardiac Conditions
- Shock – Includes treatment of Anaphylaxis and the Adrenaline Auto Injector Training pen practice
- Wounds & bleeding – Dressing applications
- Thermal injuries
- Injuries to bones, muscles & joints – sling practice
- Spinal injuries – log rolling
- Poisoning
- Hypo/hypothermia
- Diabetes
- Seizures
- Moving and handling, reporting and record keeping
- Practical & Theoretical assessments

<b>Trainer:</b>	NHS Ambulance Service <i>Delegates must attend both dates</i>
<b>Dates:</b>	3 AND 4 October 2016
<b>Time:</b>	9:00am – 4:30pm
<b>Venue:</b>	Thompson House, Sandy Lane, Newport, IOW, PO30 3NA
<b>Cost:</b>	Subscribing organisations will be charged £150 per place. Non subscribing organisations will be charged £185 per place.

## Paediatric First Aid

### TARGET GROUP:

Anyone who works with young children.

### COURSE AIMS:

By the end of the course, delegates will understand/ be able to demonstrate:

- Planning for first aid emergencies
- Dealing with emergencies
- Resuscitation procedures appropriate to the age of the child – practice
- Treatment of Choking for adults and Paediatrics
- Anaphylaxis – Adrenaline Auto Injector pen training
- Asthma & Croup
- Circulation
- Wounds – application of dressings
- Poisoning, bites and stings
- Burns & scolds
- Sprains, strains and fractures – sling practice
- Head injuries
- Spinal injuries
- Childhood medical conditions
- Diabetic Emergencies
- Seizures
- Giving medicines
- Automated External Defibrillator demonstration

### INTENDED IMPACT:

By the end of the training successful delegates will have achieved the necessary skills and competence to pass the accredited two day training that is required under the statutory framework for the Early Years Foundation stage (EYFS).

**Dates to be announced for 2017 shortly, please check [www.iwight.com/trainingcourses](http://www.iwight.com/trainingcourses) for updates**

## Mental Health First Aid for Schools and Colleges

### TARGET GROUP:

Anyone working in a school or college with children aged 8-18.

### COURSE AIMS:

MHFA for Schools and Colleges has been designed especially with schools in mind. Based on the Youth MHFA course, but targeted to meet the needs of educational environments, MHFA Schools will cover key topics around young people's mental health and wellbeing, with a strong practical focus on how support young people experiencing mental distress.

Whilst the course is not a replacement for the 2 day Youth MHFA course, delegates will become Ambassadors for better mental health in schools.

What will I learn about on a MHFA for Schools and College course?

- Why Youth MHFA for Schools and Colleges?
- What is mental health and mental ill health?
- Stigma and discrimination
- The five steps of mental health first aid
- Depression
- Suicide
- Non judgemental listening skills
- Anxiety
- Self-harm
- Eating disorders
- Psychosis

As a one-day course, this fits perfectly into schools' inset training days and busy private school timetables, making it accessible for teaching staff across sectors. The session will be a mix of presentation, group discussions and group work activities. Our instructors provide a very safe learning environment and are trained to support you throughout the whole course. If you don't feel comfortable joining in certain bits, then don't. We won't make you do something you aren't comfortable with.

**Trainer:** Kate Golding  
**Date:** 10 October 2016  
**Time:** 9:30am – 4:30pm  
**Venue:** Community Learning Centre, Westridge, Brading Road, Ryde, IOW, PO33 1QS  
**Cost:** Subscribing organisations will be charged £129 per place.  
Non-subscribing organisations will be charged £162 per place.

## Food Hygiene

### TARGET GROUP:

Evidence of appropriate training in Food Hygiene is a requirement for any member of staff whose job role involves food preparation.

### COURSE AIMS:

This new on-line training is a fully certified course and is available to complete during group sessions at ICT suite, Community Learning Centre. The test consists of a series of 30 questions and has a pass mark of 70%. If you do not achieve the pass mark the first time it is possible to re-take the test having reviewed the course material. Upon completion of the test you will have the opportunity to print off a copy of your certificate.

It is the responsibility of your manager to decide whether this course is relevant for your job-role, and to ensure that any training is carried out on a regular and necessary basis.

**As this is an on-line course, it is a requirement that you have basic computer skills. If you would like to discuss this further please contact Learning & Development.**

### *Please choose one of the dates below:*

**Date:** 19 September 2016  
**Time:** 9:30am – 12:30pm  
OR  
**Date:** 14 November 2016  
**Time:** 1:30pm – 4:30pm  
OR  
**Date:** 23 January 2017  
**Time:** 9:30am – 12:30pm  
OR  
**Date:** 6 March 2017  
**Time:** 1:30pm – 4:30pm  
**Venue:** Community Learning Centre, Westridge, Brading Road, Ryde, IOW, PO33 1QS  
**Cost:** No additional cost for subscribing Early Years settings.  
Subscribing organisations will be charged £40 per place.  
Non-subscribing organisations will be charged £50 per place.

# Core Learning

## Attendance Management

---

### TARGET GROUP:

Managers in schools and early years settings with line management responsibility.

### COURSE AIMS:

By the end of this workshop, participants will:

- Understand what contributes to a positive and healthy working environment and techniques that enable managers to increase productivity together with promoting personal well-being.
- Be aware of latest sickness absence trends nationally and locally, along with the main causes of sickness absence and what practical steps/action can be taken to minimising their occurrence.
- Understand the contents of the council's attendance management policy and procedure and be clear about the expectations and responsibilities of managers.
- Know how to conduct effective return to work interviews and to determine likely causes for concern with appropriate interventions conducted in a supportive manner.
- Know what action is required when consideration points within the council's policy have been reached and what steps can be taken to avoid further repeated absences.
- Understand how to make effective referrals to the council's occupational health provider and determine appropriate action plans.
- Know how to prepare and implement return to work plans.

### INTENDED IMPACT:

Sickness and absenteeism can be detrimental to the business and can potentially have a negative impact on workplace cohesion and so a positive and pro-active approach to wellbeing in the workplace is an essential component of a manager's role.

This training workshop will equip managers with an understanding of how to promote a highly productive working environment together with the knowledge and confidence to address sickness absence in a pro-active and productive way.

It will also enable managers to have open conversations with employees and to effectively use our published policies to assess when absence is becoming an issue and how best to address individual cases. Managers will be provided with the essential skills to investigate and manage instances of absence as well as how to conduct effective return to work interviews.

<b>Trainer:</b>	Karen Whittington, HR Business Partner <i>Please choose one of the dates below</i>
<b>Date:</b>	14 September 2016 OR 8 December 2016
<b>Time:</b>	9:30am – 12:30pm
<b>Venue:</b>	Thompson House, Sandy Lane, Newport, IOW, PO30 3NA
<b>Cost:</b>	No additional cost for subscribing Early Years settings. Subscribing organisations will be charged £80 per place. Non subscribing organisations will be charged £100 per place.

## Word 2010 Intermediate

---

### TARGET GROUP:

Any staff that have a need to use Word in their job role and may wish to up skill to be able to do their job better, faster and with more confidence.

### COURSE AIMS:

The course aims to provide intermediate Word knowledge to delegates. The interactive day will cover various areas of Word 2010. Topics covered will include:

- Customisation
- Proofing and Printing
- Compatibility mode
- Paragraph formatting
- Pictures
- Sections
- Autocorrect
- Building blocks
- Advanced Find and Replace
- Headers and footers
- Watermarks
- Tables
- Styles
- Text Wrapping
- Columns
- Captions
- Footnotes and Endnotes
- Bookmarks and Cross References

### INTENDED IMPACT:

Following attendance on this course staff will be able to perform tasks in MS Word to an Intermediate standard thus contributing to a more efficient office.

<b>Trainer:</b>	Isle of Wight College Tutor
<b>Date:</b>	16 September 2016
<b>Time:</b>	9:00am – 5:00pm
<b>Venue:</b>	Isle of Wight College, Medina Way, Newport, IOW
<b>Cost:</b>	No additional cost for subscribing Early Years settings. Subscribing organisations will be charged £75 per place. Non subscribing organisations will be charged £94 per place.

## Team Leader Training

---

### TARGET GROUP:

This course is for team leaders and those working in supervisory management positions.

### COURSE AIMS:

This course will help develop your leadership skills to support your team objectives. As a result of attending this course, delegates will be able to:

- Lead a team using the functional leadership approach
- Motivate their team to achieve the required results
- Communicate with their staff and colleagues more effectively
- Deal with difficult situations
- Give bad news when needed

### INTENDED IMPACT:

At the end of the workshop delegates will have gained an understanding of:

- A good idea of management/supervision
- Leadership Analysis
- Building the Team
- Leading the Team
- Motivation
- Dealing with Difficult Behaviour

<b>Trainer:</b>	Yellowday Training <b><i>Please choose one of the dates below</i></b>
<b>Date:</b>	16 September 2016 OR 12 January 2017
<b>Time:</b>	9:30am – 4:30pm
<b>Venue:</b>	Thompson House, Sandy Lane, Newport, IOW, PO30 3NA
<b>Cost:</b>	No additional cost for subscribing Early Years settings. Subscribing organisations will be charged £116 per place. Non subscribing organisations will be charged £145 per place.

## Performance Management (including capability, grievance and disciplinary procedures)

---

### TARGET GROUP:

This is essential training for all new managers and a useful refresher for managers that have already attended.

### COURSE AIMS:

By the end of this workshop, participants will:

- Understand the importance and benefits of effectively managing performance.
- Be able to tackle potentially tricky staff issues through day to day management at an informal level before performance is compromised.
- Be aware of the policies available to support managing performance.
- To have or further develop the skills to implement formal procedures when necessary.

### INTENDED IMPACT:

An integral and important function that managers carry out on a regular and on-going basis is ensuring that their staff continue to perform to agreed standards so that they can effectively undertake their roles and to enable the team to achieve their organisational objectives.

There are a number of informal and formal approaches that can be used effectively to enable this to happen. This workshop introduces managers to some of the key policies that are available to them and provides managers with the necessary skills to deal with staff issues as they arise.

<b>Trainer:</b>	Mary Hilary, HR Business Partner <i>Please choose one of the dates below</i>
<b>Date:</b>	23 September 2016 OR 18 November 2016
<b>Time:</b>	9:30am – 12:30pm
<b>Venue:</b>	Thompson House, Sandy Lane, Newport, IOW, PO30 3NA
<b>Cost:</b>	No additional cost for subscribing Early Years settings. Subscribing organisations will be charged £80 per place. Non subscribing organisations will be charged £100 per place.

## Personal Safety & Lone Working

---

### TARGET GROUP:

This course is recommend for anyone who deals with service-users on a daily basis, particularly those who may find themselves alone in a potentially abusive environment. Places are very limited so please apply as soon as possible.

### COURSE AIMS:

The Suzy Lamplugh trust was established following the disappearance of estate agent Suzy Lamplugh. The trusts mission is to “campaign, educate and support people to help reduce the risk of violence and aggression for everyone”. The issue of violence and aggression at work is particularly relevant to public sector workers, with violent incidents against them almost doubling over the last decade.

### Did you know?

- 1 in 4 teachers have been victims of physical violence.
- 9 out of 10 social workers have been assaulted or threatened.

As part of the councils on-going programme of support, the Suzy Lamplugh Trust will be delivering a one day workshop, the aim of which is to help delegates spot the danger signs associated with lone working. Attendees will be given the benefit of the trusts vast experience in order to help them deal with abusive or potentially violent service-users.

This course will enable participants to:

- Spot danger signs and apply planned and practiced diffusion skills to manage volatile situations.
- Deal with abusive or potentially violent service-users.
- Work in a safer environment
- Ensure personal safety at work becomes an integral part of the job.

### INTENDED IMPACT:

Practical workshops that raise staff personal safety awareness, and identify how to make sound decisions to avoid and reduce risk. Learn how to incorporate quick, easy to use dynamic risk assessment tools and how to make ‘being safe at work’ just part of the job.

<b>Trainer:</b>	Suzy Lamplugh Trust
<b>Date:</b>	5 October 2016
<b>Time:</b>	9:30am – 4:30pm
<b>Venue:</b>	Thompson House, Sandy Lane, Newport, IOW, PO30 3NA
<b>Cost:</b>	No additional cost for subscribing Early Years settings. Subscribing organisations will be charged £140 per place. Non subscribing organisations will be charged £175 per place.

## Planning for a Positive Retirement

---

### TARGET GROUP:

Anyone considering leaving employment on normal, early or ill health retirement, or taking flexible retirement within approximately the next 18 months or so. Partners are encouraged and welcome to attend.

### COURSE AIMS:

The aim of this event is to help you apply a positive attitude and realistic approach to a healthy and financially secure retirement.

Forward planning is advisable when making any major change in life and retirement is no exception. Make sure your plans are realistic and based on knowledge not myth - join colleagues and a Retirement Specialist at a "Planning for a positive retirement" workshop to consider a range of issues related to retirement and decisions you will need to make before you leave. This workshop is delivered by Affinity Connect a national training organisation which specialises in providing pre-retirement guidance and support.

### COURSE OBJECTIVES:

- To ease financial concerns by clarifying key financial issues in particular those related to leaving service early and how best to deal with them.
- To assist with decision making when offered early retirement or redundancy.
- An opportunity to seek independent financial advice (free, no obligation consultation).

### INTENDED IMPACT:

This workshop will raise your awareness of, and give you the tools to address key issues you will need to consider as you move into retirement in respect of the following areas:

- Changes in lifestyle - relationships, time, motivation, status
- Building a new life – social/leisure/learning/ volunteering opportunities
- Health – practical steps and a personal health plan
- Occupational pension – entitlement, choices and decisions you will need to make before you leave
- State pensions – entitlement and claiming, other benefit entitlements
- Personal Taxation - changes at retirement and some tax planning tips
- Budgeting - changes pre and post retirement
- Inflation - what real inflation means to you personally and how to protect against it
- Longevity – planning for the long term
- Investment - understanding investment principles and minimising risk in retirement
- Estate planning – Wills, Power of Attorney, inheritance tax, long term care
- The opportunity to request Independent Financial Advice.

<b>Trainer:</b>	Affinity Connect
<b>Date:</b>	11 October 2016
<b>Time:</b>	1:00pm – 4:00pm
<b>Venue:</b>	Thompson House, Sandy Lane, Newport, IOW, PO30 3NA
<b>Cost:</b>	No additional cost for subscribing Early Years settings. Subscribing organisations will be charged £37 per place. Non subscribing organisations will be charged £47 per place.

## Mental Health Awareness Training for Managers

---

### TARGET GROUP:

This course is aimed at Isle of Wight Council Managers that would like to learn more about supporting employees with mental health issues in the workplace.

### COURSE AIMS:

By the end of this workshop, participants will:

- Understand their legal responsibilities with regards to managing mental health issues within their teams.
- Be able to effectively manage employees who have/have had mental health issues.
- Understand the signs and symptoms of mental health issues in the workplace and respond appropriately.
- Be aware of the SHIFT Line Manager's resource and "We can work it out" guide.

### INTENDED IMPACT:

The aim of this training is to equip delegates with the tools to identify and effectively manage employees who experience mental health issues in the workplace and in so doing provide a working environment and management practices that promotes good health and wellbeing of all employees thus reducing the occurrence of absence and related costs.

<b>Trainer:</b>	Mary Hilary and Pauline Bolwell, HR Business Partners <i>Please choose one of the dates below</i>
<b>Date:</b>	21 September 2016 OR 17 January 2017
<b>Time:</b>	9:30am – 12:30pm
<b>Venue:</b>	Thompson House, Sandy Lane, Newport, IOW, PO30 3NA
<b>Cost:</b>	No additional cost for subscribing Early Years settings. Subscribing organisations will be charged £80 per place. Non subscribing organisations will be charged £100 per place.





# learn&develop

ISLE OF WIGHT

Published by:  
Isle of Wight Council  
Learning & Development Service  
Community Learning Centre  
Westridge  
Brading Road  
Ryde  
Isle of Wight PO33 1QS

Tel: (01983) 817280  
E-mail: [learning.development@iow.gov.uk](mailto:learning.development@iow.gov.uk)  
Web: [www.iowight.com/trainingcourses](http://www.iowight.com/trainingcourses)  
Facebook: [www.facebook.com/iowclearning](http://www.facebook.com/iowclearning)

1888CX0812

