

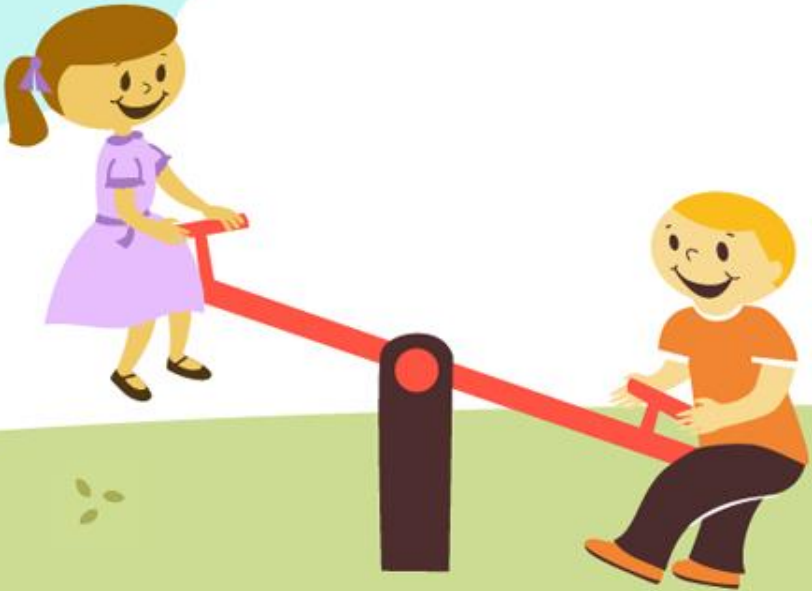
# Children & Families Plan 2021-24

Isle of Wight Children's Trust



# Vision

The Isle of Wight provides every child, young person & their family with the opportunity to be happy, healthy and to achieve.



# Priorities

- Isle Be Safe & Happy
- Isle Be Healthy
- Isle Achieve



# Sub groups

- Isle Be Safe & Happy
- Isle Be Healthy
- Isle Achieve

✓ToR in place

✓Chairs in place

✓Each sub group has nominated members from across the CYP Trust.



# Isle Be Safe & Happy subgroup

## Members

ISLE BE SAFE AND HAPPY - Chair : Area Director, Children and Families Branch, Children's Services.			
Name	Position / Agency / Organisation	Email address	Nominated by
Kelly Quinn	Team Manager, Children's Services.	<a href="mailto:Kelly.quinn@iow.gov.uk">Kelly.quinn@iow.gov.uk</a>	Kathy Marriott
Michelle Campbell	IW College	<a href="mailto:Michelle.campbell@iwcollege.ac.uk">Michelle.campbell@iwcollege.ac.uk</a>	Debbie Lavin
Victoria Mackie	St George's School	<a href="mailto:viro@stgeorges.iow.sch.uk">viro@stgeorges.iow.sch.uk</a>	Sue Holman
Bex Guy	NHS North Hants CCG	<a href="mailto:Bex.guy@nhs.net">Bex.guy@nhs.net</a>	Matt Powell
Cally Wareham	CAMHS	<a href="mailto:Cally.wareham@nhs.net">Cally.wareham@nhs.net</a>	Helen Figgins
Angela Roberts	Ryde Academy	<a href="mailto:aroberts@rydeacademy.org">aroberts@rydeacademy.org</a>	Joy Ballard
Matthew Woodhouse	YOT	<a href="mailto:Matthew.woodhouse@iow.gov.uk">Matthew.woodhouse@iow.gov.uk</a>	Nikki Shave
Jane Thurbin	Early Years	<a href="mailto:Jane.Thurbin@iow.gov.uk">Jane.Thurbin@iow.gov.uk</a>	Theresa Wall
Nicola Blake	Virtual School	<a href="mailto:Nicola.blake@hants.gov.uk">Nicola.blake@hants.gov.uk</a>	Nicola Blake



# Isle Be Safe & Happy

## Objectives

- To empower communities and families to be resilient and more economically secure
- To provide children and families with early help to prevent problems from escalating
- To protect children and young people at risk of harm, through strengths based, family focused, multi-disciplinary working
- To encourage fun, happiness and fulfilment



# Objective 1: To empower communities and families to be resilient and more economically secure

## Actions

- Work with partners, including town and parish councils to deliver innovative solutions to secure the provision of affordable housing for Island residents
- Working with Island Futures we will use external funding sources to deliver a range of apprenticeship and training opportunities such as the Government's kickstart programme.
- Promote and deliver Family Learning and Adult Literacy/skill development



# Isle Be Safe & Happy-How will we know if we have made a difference?

- No. of families in B&B/temporary accommodation
- Number of IW Lower Super Output Areas (LSOAs) that are within 20% most deprived nationally
- The number of intermediate/advanced and higher apprenticeship starts in year (annual measure)
- The percentage of level 2/3 qualified adults (annual nomis data from ONS) (annual measure)
- The proportion of working age population qualified at NVQ level 2 or higher (annual measure)
- No. of families supported through HAF
- The proportion of children living in poverty (all under 20).
- The number of post-16/17s not in education, employment, and training (NEET) or the percentage of them;





# Objective 2: To provide children and families with early help to prevent problems from escalating

## Actions

- Delivery of the early help strategy and action plan to support families in the community.
- Enhance family hubs and the wider early help offer to prevent escalation into more costly statutory services.



# Isle Be Safe & Happy-How will we know if we have made a difference?

- No. of early help cases
- No. of families accessing Family Hubs support
- No % of early help cases closed with outcomes achieved
- No. and % of Supporting families outcomes achieved (PbR).



# Objective 3: To protect children and young people at risk of harm, through strengths based, family focused, multi-disciplinary working

## Actions

- Delivery of children's social care transformation programme, embedding the Hampshire and Isle of Wight.
- Work with partners to ensure restorative, strength-based approaches are implemented across partnership.
- Ensure multi-disciplinary teams and services developed and maintained.



# Isle Be Safe & Happy-How will we know if we have made a difference?

- Rate of CiN
- No. and % of CiN cases closed with outcomes achieved
- No. of child protection plans closed due to reduction in risks
- Number and rate of children looked after by the Local Authority
- Number of looked after children safely reunified with their family



# Objective 4: To encourage fun, happiness and fulfilment

## Actions

- Develop FISH website, providing a ‘one stop shop’ of advice and support for children and families including information on activities and opportunities for children and young people across the island.
- Delivery of the Holiday Activities Fund for vulnerable children and families
- Delivery of Children’s Services Participation Strategy including opportunities for looked after children and care experienced young people to participate in positive activities and .
- Delivery of youth opportunities through Education Investment Area funding.

